



Keio Corporation

FACT BOOK 2008

Last five-year Summary(Consolidated)

(連絡先)

contact address

京王電鉄株式会社 総合企画本部 経理部
Keio Corporation

久保 田口
Kubo Taguchi

PHONE : 042-337-3135

F A X : 042-337-5009

Contents

Data highlights (Consolidated)

営業収益 Operating revenues	1
営業利益 Operating income	1
当期純利益 Net income	1
総資産と純資産 Total assets & Net assets	2
利益剰余金 Retained earnings	2
キャッシュ・フロー Cash flows	3
現金及び現金同等物の期末残高 Cash and cash equivalents at end of year	3
有利子負債 Interest-bearing debt	3

Financial statements (Consolidated)

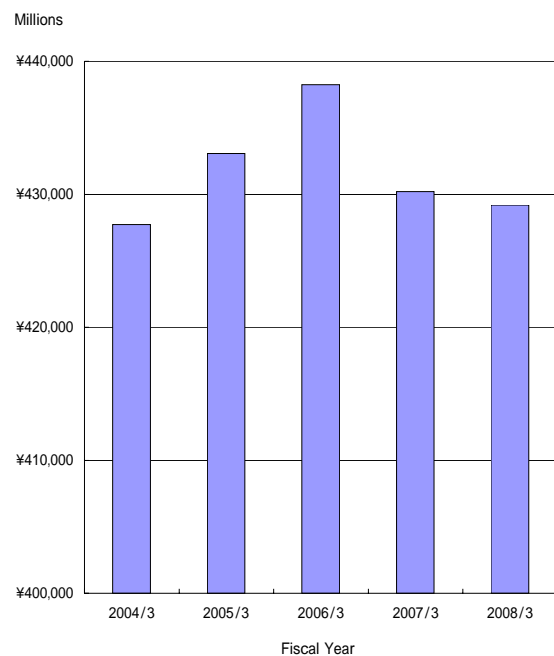
連結貸借対照表 Consolidated balance sheets	4
連結損益計算書 Consolidated statements of income	6
連結キャッシュ・フロー計算書 Consolidated statements of cash flows	7

Segment information

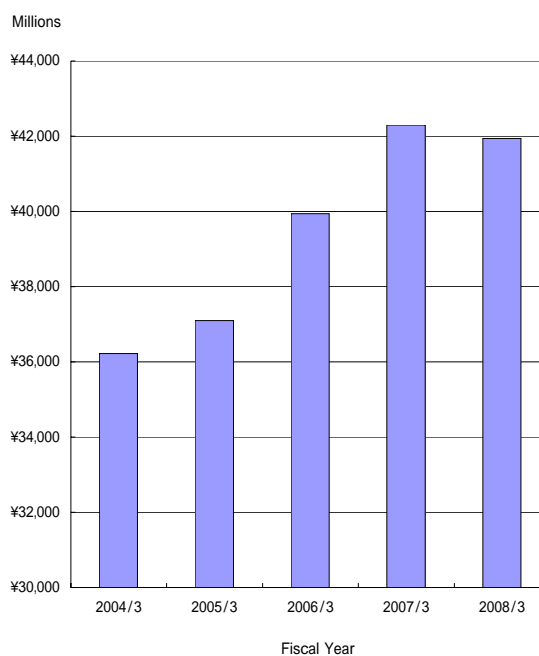
営業収益 Operating revenues	8
営業収益の明細 Operating revenues transaction	9
・運輸業 Transportation ... 9	
・鉄道輸送人員の対前年増減率 ...9	
Variation ratio against previous year of passengers transported (Railways)	
・流通業 Merchandise sales ... 10	
・不動産業 Real estate ... 10	
・レジャー・サービス業 Leisure ... 10	
・その他 Others ... 10	
営業利益 Operating income	11
総資産 Total assets	11
減価償却費 Depreciation	12
減価償却費と設備投資 Depreciation & Capital expenditures	12
減損損失 Loss on Impairment	13
従業員数 Numbers of employee	13

データ・ハイライト(連結)
Data highlights (Consolidated)

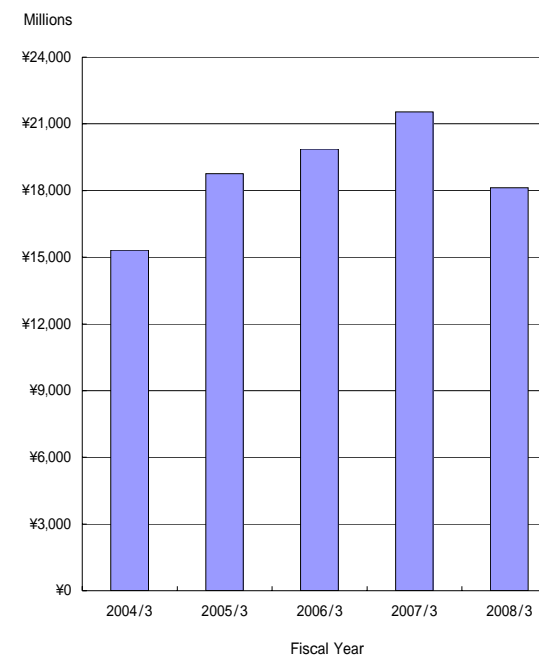
営業収益
Operating revenues



営業利益
Operating income



当期純利益
Net income

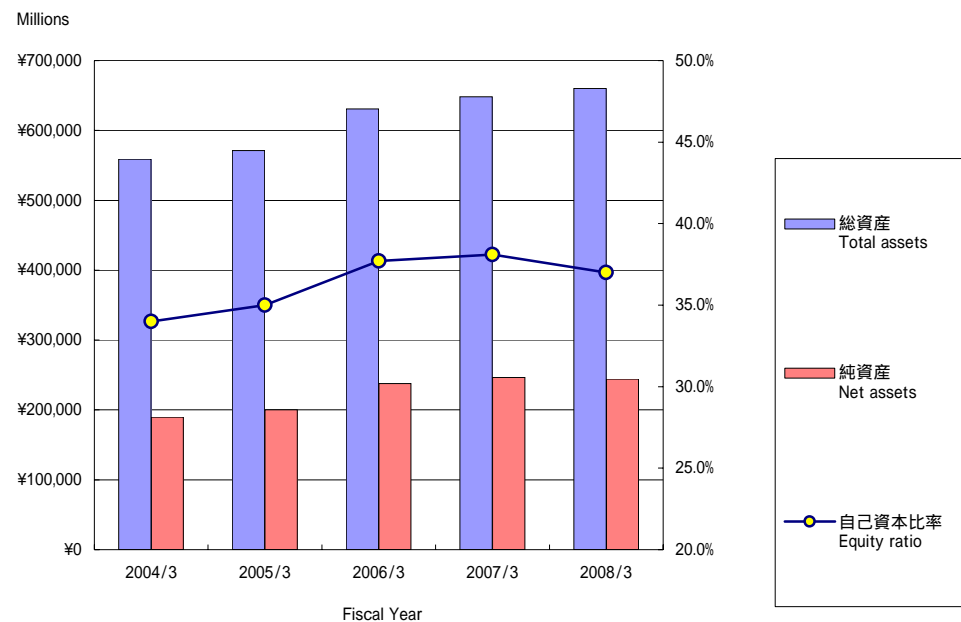


(100万円 millions of yen)

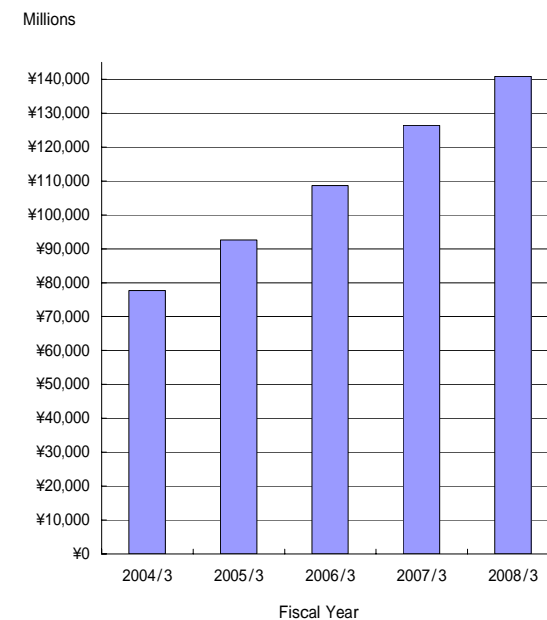
	2004/3	2005/3	2006/3	2007/3	2008/3
営業収益 Operating revenues	427,722	433,071	438,253	430,197	429,190
営業利益 Operating income	36,223	37,096	39,937	42,298	41,941
当期純利益 Net income	15,316	18,764	19,867	21,539	18,129

データ・ハイライト(連結)
Data highlights (Consolidated)

総資産と純資産
Total assets & Net assets



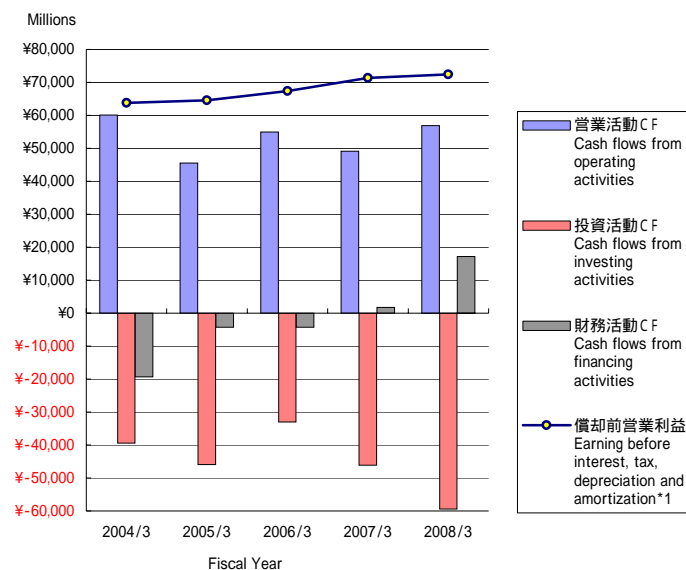
利益剰余金
Retained earnings



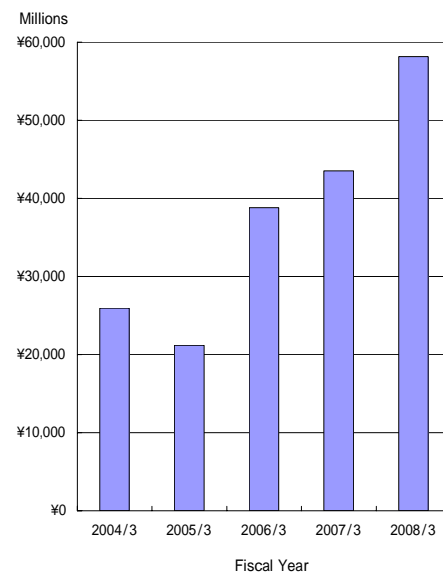
	(100万円 millions of yen)				
	2004/3	2005/3	2006/3	2007/3	2008/3
総資産 Total assets	558,708	571,311	630,700	648,161	660,161
純資産 Net assets	189,749	199,997	237,644	246,629	244,185
自己資本比率 Equity ratio	34.0%	35.0%	37.7%	38.1%	37.0%
利益剰余金 Retained earnings	77,688	92,601	108,651	126,389	140,812

データ・ハイライト(連結)
Data highlights (Consolidated)

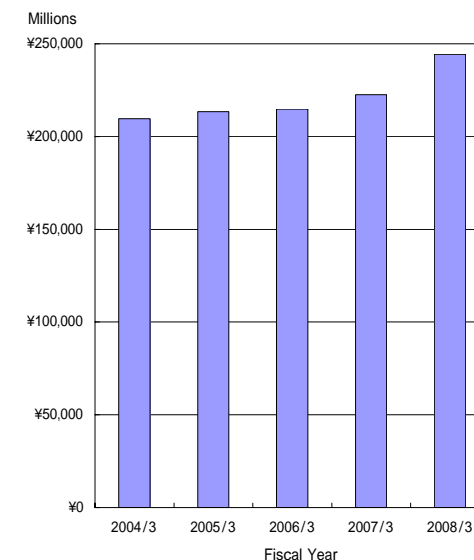
キャッシュ・フロー
Cash flows



現金及び現金同等物の期末残高
Cash and cash equivalents at end of year



有利子負債
Interest-bearing debt



	2004/3	2005/3	2006/3	2007/3	2008/3
営業活動CF Cash flows from operating activities	60,090	45,524	54,944	49,086	56,881
投資活動CF Cash flows from investing activities	39,394	45,950	33,040	46,110	59,428
財務活動CF Cash flows from financing activities	19,285	4,314	4,299	1,733	17,194
償却前営業利益 Earning before interest, tax, depreciation and amortization*1	63,800	64,605	67,407	71,390	72,381
現金及び現金同等物の期末残高 Cash and cash equivalents at end of year	25,928	21,192	38,802	43,516	58,167
有利子負債 Interest-bearing debt*2	209,614	213,409	214,778	222,531	244,254

(100万円 millions of yen)

*1 償却前営業利益 = 営業利益 + 減価償却費

Earning before interest, tax, depreciation and amortization = Operating income + Depreciation

*2 有利子負債 = 借入金 + 社債 + 鉄道・運輸機構未払金

Interest-bearing debt = Borrowings + Bonds + Long-term accounts payable from other financial institutions

財務諸表(連結) Financial statements (Consolidated)

連結貸借対照表 Consolidated balance sheets

	(100万円 millions of yen)				
	2004/3	2005/3	2006/3	2007/3	2008/3
資産の部 Assets					
流動資産 Current assets	89,092	82,994	99,659	106,687	118,358
現金及び預金 Cash and bank deposits	24,312	22,239	28,833	29,546	49,199
受取手形及び売掛金 Notes and accounts receivable, trade	25,817	26,239	27,630	34,251	31,990
短期貸付金 Short-term loans receivable	3,371	454	10,396	14,533	9,385
有価証券 Short-term investments	20	34		1	15
たな卸資産 Inventories	29,151	28,157	25,771	22,130	20,885
繰延税金資産 Deferred tax assets	4,158	3,681	4,146	3,693	3,752
その他 Others	2,535	2,431	3,212	2,812	3,311
貸倒引当金 Allowances for doubtful accounts	274	245	331	281	181
固定資産 Fixed assets	469,615	488,316	531,040	541,473	541,803
有形固定資産 Property and equipment	387,271	406,637	411,727	430,482	464,024
建物及び構築物 Buildings and structures	234,197	240,156	237,869	238,935	236,901
機械装置及び運搬具 Machinery, rolling stock and equipment	32,640	32,779	33,502	35,513	38,187
土地 Land	96,847	105,386	111,329	116,844	133,369
建設仮勘定 Construction in progress	15,248	19,859	20,401	28,822	44,623
その他 Others	8,336	8,455	8,624	10,365	10,943
無形固定資産 Intangible assets	3,777	3,318	3,010	4,602	5,457
投資その他の資産 Investments and other fixed assets	78,567	78,360	116,302	106,388	72,320
投資有価証券 Investments in securities	58,943	57,904	99,341	85,449	53,771
長期貸付金 Long-term loans receivable	398	514	553	572	568
繰延税金資産 Deferred tax assets	7,940	8,366	7,860	7,444	7,972
その他 Others	11,709	11,987	8,640	13,076	10,335
貸倒引当金 Allowances for doubtful accounts	425	412	93	154	326
資産合計 Total Assets	558,708	571,311	630,700	648,161	660,161

財務諸表(連結) Financial statements (Consolidated)

連結貸借対照表 Consolidated balance sheets

(100万円 millions of yen)

	2004/3	2005/3	2006/3	2007/3	2008/3
負債の部 Liabilities					
流動負債 Current liabilities	142,046	140,862	158,124	172,156	179,443
支払手形及び買掛金 Notes and accounts payable, trade	21,781	23,095	22,613	23,559	20,517
短期借入金 Short-term loans payable	52,236	50,410	57,988	52,720	52,097
1年以内償還社債 Current portion of bonds	-	-	-	10,000	10,000
未払法人税等 Income taxes payable	10,958	7,500	10,164	8,090	11,110
前受金 Advances received	8,756	9,438	9,968	16,165	21,818
賞与引当金 Reserve for employees' bonuses	3,031	2,646	2,627	2,572	2,423
役員賞与引当金 Reserve for directors & corporate auditors' bonuses	-	-	-	95	95
その他の引当金 Other reserves	471	393	963	268	1,515
その他 Others	44,811	47,376	53,797	58,685	59,866
固定負債 Long term liabilities	217,528	223,413	230,239	227,029	236,532
社債 Bonds	50,000	60,000	60,000	55,932	76,512
長期借入金 Long-term loans payable	99,571	96,452	91,072	98,836	104,027
長期未払金 Long-term accounts payable	7,898	6,615	5,775	5,094	1,647
繰延税金負債 Deferred tax liabilities	5,322	5,684	20,362	15,031	384
退職給付引当金 Reserve for retirement benefits	31,436	28,395	25,270	24,788	24,843
役員退職慰労金引当金 Reserve for retirement benefits to directors & corporate auditors	675	665	727	-	-
その他 Others	22,622	25,599	27,030	27,344	29,116
特別法上の準備金 Reserve under special act	9,384	7,038	4,692	2,346	-
特定都市鉄道整備準備金 Special reserve for expansion of railway transport capacity	9,384	7,038	4,692	2,346	-
負債合計 Total liabilities	368,959	371,314	393,056	401,531	415,976
資本の部 Shareholders' equity					
資本金 Common stock	59,023	59,023	59,023	-	-
資本剰余金 Additional paid-in capital	42,017	42,016	42,017	-	-
利益剰余金 Retained earnings	77,688	92,601	108,651	-	-
その他有価証券評価差額金 Unrealized gains on available-for-sale securities, net of tax	19,959	19,624	43,155	-	-
自己株式 Treasury stock, at cost	8,938	13,269	15,204	-	-
資本合計 Total shareholders' equity	189,749	199,997	237,644	-	-
負債、少数株主持分及び資本合計 Total Liabilities and shareholders' equity	558,708	571,311	630,700	-	-
純資産の部 Net assets					
株主資本 Shareholders' equity	-	-	-	212,125	226,482
資本金 Common stock	-	-	-	59,023	59,023
資本剰余金 Additional paid-in capital	-	-	-	42,022	42,025
利益剰余金 Retained earnings	-	-	-	126,389	140,812
自己株式 Treasury stock, at cost	-	-	-	15,310	15,380
評価・換算差額等 Valuation and translation adjustments	-	-	-	34,504	17,703
その他有価証券評価差額金 Unrealized gains on available-for-sale securities, net of tax	-	-	-	34,504	17,703
純資産合計 Total net assets	-	-	-	246,629	244,185
負債純資産合計 Total Liabilities and Net assets	-	-	-	648,161	660,161

財務諸表(連結) Financial statements (Consolidated)

連結損益計算書 Consolidated statements of income

(100万円 millions of yen)

	2004/3	2005/3	2006/3	2007/3	2008/3
営業損益の部 Operating income and expenses					
営業収益 Operating revenues	427,722	433,071	438,253	430,197	429,190
営業費 Operating costs and expenses	391,498	395,974	398,316	387,899	387,248
運輸業等営業費及び売上原価 Operating costs	343,009	346,242	349,669	340,239	339,426
販売費及び一般管理費 Selling, general and administrative expenses	48,489	49,732	48,647	47,659	47,822
営業利益 Operating income	36,223	37,096	39,937	42,298	41,941
営業外損益の部 Non operating income and expenses					
営業外収益 Non operating income	2,450	2,362	2,351	2,291	2,464
受取利息及び配当金 Interest and dividend income	433	505	746	1,019	1,128
持分法による投資利益 Equity in earnings of affiliates and unconsolidated subsidiaries	75	61	114	95	95
その他 Others	1,942	1,795	1,490	1,177	1,240
営業外費用 Non operating expenses	7,550	7,735	5,920	7,794	5,533
支払利息 Interest expense	5,423	4,984	4,918	5,397	4,896
その他 Others	2,127	2,751	1,002	2,396	636
経常利益 Recurring income	31,123	31,723	36,368	36,795	38,872
特別損益の部 Extraordinary profit and loss					
特別利益 Extraordinary profit	4,718	4,633	5,170	4,997	4,943
固定資産売却益 Gains on sales of property and equipment	203	472	140	135	453
工事負担金等受入額 Subsidy received from Tokyo Metropolitan Government and others	785	676	1,935	2,223	1,208
投資有価証券売却益 Gains on sales of investments in securities	1,293	858	184	-	371
特定都市鉄道整備準備金取崩額 Reversal of special reserve for expansion of railway transport capacity	2,346	2,346	2,346	2,346	2,346
年金資産返還時数理差異償却額 Increase in actuarial assumptions in retirement benefits	-	-	-	-	367
その他 Others	90	279	563	292	196
特別損失 Extraordinary loss	8,729	4,368	8,005	5,090	12,576
固定資産臨時償却 Non-recurring depreciation	-	-	713	-	-
減損損失 Loss on Impairment	4,957	733	2,698	1,037	4,226
固定資産売却損 Loss on sales of property and equipment	-	-	-	134	58
固定資産除却損 Loss on disposal of property and equipment	2,328	1,562	1,649	1,228	1,245
固定資産圧縮損 Advance depreciation of fixed assets	842	1,137	1,932	2,198	1,629
投資有価証券評価損 Loss on revaluation of investments in securities	368	118	-	-	1,068
退職金制度変更損失 Loss on the revision of the retirement benefits plan	-	688	-	-	-
特別退職金 Special retirement payments	-	-	881	123	-
退店補償金 Compensation for tenants closing	-	-	-	-	3,113
商品券等回収損失引当金繰入額 Provision of reserve for loss from redemption of gift vouchers for prior periods	-	-	-	-	355
その他 Others	232	127	130	368	880
税金等調整前当期純利益 Income before income taxes and minority interest in income (loss) of consolidated subsidiaries	27,112	31,988	33,532	36,702	31,239
法人税、住民税及び事業税 Income taxes (Current)	14,820	12,581	15,095	13,668	16,814
法人税等調整額 Income taxes (Deferred)	3,042	642	1,429	1,494	3,704
少数株主損益 Minority interest in income (loss) of consolidated subsidiaries	18	-	-	-	-
当期純利益 Net income	15,316	18,764	19,867	21,539	18,129

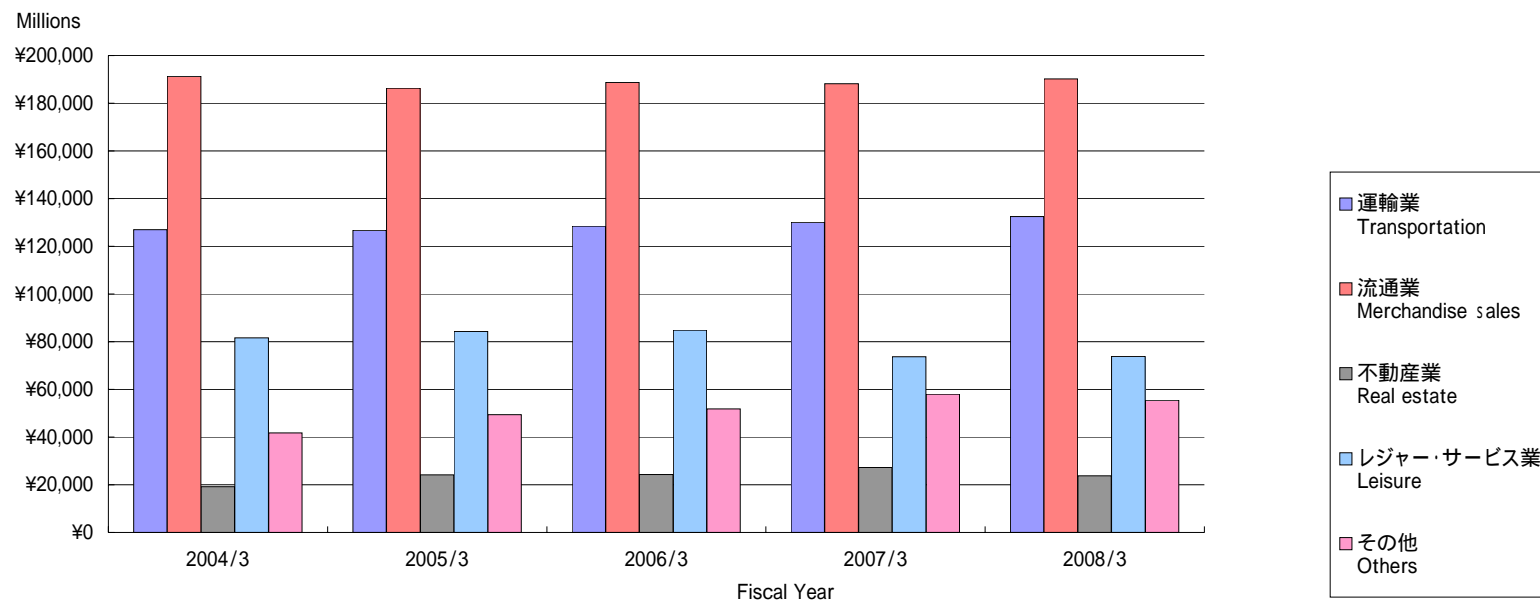
財務諸表(連結) Financial statements (Consolidated)

連結キャッシュ・フロー計算書 Consolidated statements of cash flows

	2004/3	2005/3	2006/3	2007/3	2008/3
	(100万円 millions of yen)				
税金等調整前当期純利益 Income before income taxes and minority interest in income (loss) of consolidated subsidiaries	27,112	31,988	33,532	36,702	31,239
減価償却費 Depreciation	27,577	27,509	28,183	29,091	31,084
減損損失 Loss on Impairment	4,957	733	2,698	1,037	4,226
連結調整勘定償却額 Amortization of consolidation adjusting account	224	-	-	-	-
退職給付引当金の増減額 (Decrease) Increase in reserve for retirement benefits	2,224	3,041	1,438	481	55
前払年金費用の増減額 (Decrease) Increase in prepaid pension cost	-	-	-	3,428	2,146
特定都市鉄道整備準備金の増減額 (Decrease) Increase in special reserve for expansion of railway transport capacity	2,346	2,346	2,346	2,346	2,346
販売土地評価損 Loss on revaluation of real estate inventories for sale	609	840	178	40	16
投資有価証券評価損 Loss on revaluation of investments in securities	368	118	16	19	1,068
固定資産除却損 Loss on disposal of property and equipment	2,545	1,623	2,618	2,114	2,482
固定資産圧縮損 Advance depreciation of fixed assets	842	1,137	1,586	2,198	1,629
受取利息及び受取配当金 Interest and dividend income	433	505	746	1,019	1,128
支払利息 Interest expense	5,423	4,984	4,918	5,397	4,896
社債償還損 Loss on redemption of bonds	-	-	-	1,623	-
投資有価証券売却益 Gains on sales of investments in securities	1,293	858	184	-	371
工事負担金受入額及び補助金 Subsidy received from Tokyo Metropolitan Government and others	785	676	1,935	2,223	1,208
退店補償金 Compensation for tenants closing	-	-	-	-	3,113
営業債権の増減額 (Decrease) Increase in notes and accounts receivables	568	421	1,391	6,619	2,238
たな卸資産の増減額 (Decrease) Increase in inventories	1,336	1,109	2,259	3,622	888
営業債務の増減額 (Decrease) Increase in notes and accounts payable	1,633	605	2,239	1,904	4,422
その他 Other, net	8,965	4,090	984	1,408	46
小計 Subtotal	73,496	66,890	71,174	69,044	75,653
利息及び配当金の受取額 Interest and dividends received	316	509	749	1,022	1,133
利息の支払額 Interest paid	5,434	4,995	4,904	5,098	4,226
退店補償金の支払額 Compensation paid for tenants closing	-	-	-	-	2,000
法人税等の支払額 Income taxes paid	8,288	16,879	12,075	15,882	13,679
営業活動によるキャッシュ・フロー Cash flows from operating activities	60,090	45,524	54,944	49,086	56,881
有形固定資産の取得による支出 Payments for purchase of property and equipment	39,765	48,319	34,975	49,815	67,274
工事負担金及び補助金の受入れ Subsidy received from Tokyo Metropolitan Government and other	1,236	1,089	2,897	6,399	7,119
投資有価証券の取得による支出 Payments for purchase of securities	403	55	1,781	711	703
投資有価証券の売却及び償還による収入 Proceeds from sales and redemption of securities	2,576	1,457	303	87	3,434
その他 Other, net	3,038	123	515	2,070	2,003
投資活動によるキャッシュ・フロー Cash flows from investing activities	39,394	45,950	33,040	46,110	59,428
短期借入金の純増減額 (Decrease) Increase in short-term loans payable	2,170	1,080	1,420	859	810
長期借入れによる収入 Increase in long-term loans payable	7,210	9,050	13,070	19,950	17,500
長期借入金の返済による支出 Repayment of long-term loans payable	13,467	12,914	12,292	18,313	12,121
社債の発行による収入 Proceeds from issuance of bonds	-	10,000	-	25,352	29,844
社債の償還による支出 Payment for redemption of bonds	-	-	-	21,623	10,000
長期未払金の返済による支出 Repayment of long-term accounts payable	1,827	1,283	839	680	3,447
自己株式の取得による支出 Purchase of treasury stock	4,939	4,419	1,963	117	91
配当金の支払額 Cash dividends paid	4,111	3,755	3,722	3,706	3,705
その他 Other, net	21	88	29	12	25
財務活動によるキャッシュ・フロー Cash flows from financing activities	19,285	4,314	4,299	1,733	17,194
現金及び現金同等物に係る換算差額 Effect of exchange rate changes on cash and cash equivalents	3	5	5	4	3
現金及び現金同等物の増減額 Net increase in cash and cash equivalents	1,413	4,735	17,609	4,713	14,650
現金及び現金同等物の期首残高 Cash and cash equivalents at beginning of year	24,515	25,928	21,192	38,802	43,516
現金及び現金同等物の期末残高 Cash and cash equivalents at end of year	25,928	21,192	38,802	43,516	58,167

セグメント情報
Segment information

営業収益 Operating revenues



(100万円 millions of yen)

	2004/3	2005/3	2006/3	2007/3	2008/3
運輸業 Transportation	126,914	126,700	128,519	130,097	132,453
流通業 Merchandise sales	191,258	186,299	188,697	188,240	190,141
不動産業 Real estate	19,148	24,192	24,322	27,201	23,745
レジャー・サービス業 Leisure	81,586	84,242	84,775	73,718	73,835
その他 Others	41,804	49,330	51,777	57,933	55,451
合計 Total	460,712	470,764	478,092	477,191	475,627
消去 Elimination	(32,989)	(37,693)	(39,839)	(46,994)	(46,437)
連結 Consolidated	427,722	433,071	438,253	430,197	429,190

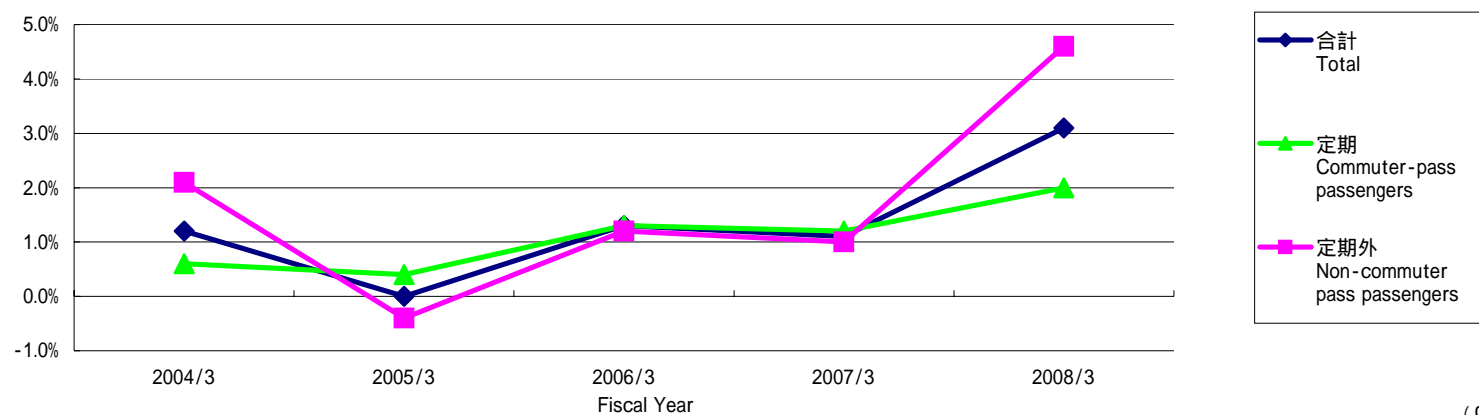
セグメント情報 Segment information

営業収益の明細 Operating revenues transaction

(100万円 millions of yen)

	2004/3	2005/3	2006/3	2007/3	2008/3
運輸業 Transportation					
鉄道事業 Railways	79,303	79,502	80,421	81,238	82,902
バス事業 Bus services	26,528	27,181	27,840	28,141	28,610
タクシー業 Taxi services	14,873	14,071	14,344	14,604	14,665
その他 Others	2,981	3,099	3,164	3,101	3,156
セグメント間取引 Intersegment	3,227	2,845	2,748	3,011	3,118
合計 Total	126,914	126,700	128,519	130,097	132,453

鉄道輸送人員の対前年増減率 Variation ratio against previous year of passengers transported (Railways)



	2004/3	2005/3	2006/3	2007/3	2008/3
定期 Commuter-pass passengers	0.6	0.4	1.3	1.2	2.0
定期外 Non-commuter pass passengers	2.1	0.4	1.2	1.0	4.6
合計 Total	1.2	0.0	1.3	1.1	3.1

セグメント情報

Segment information

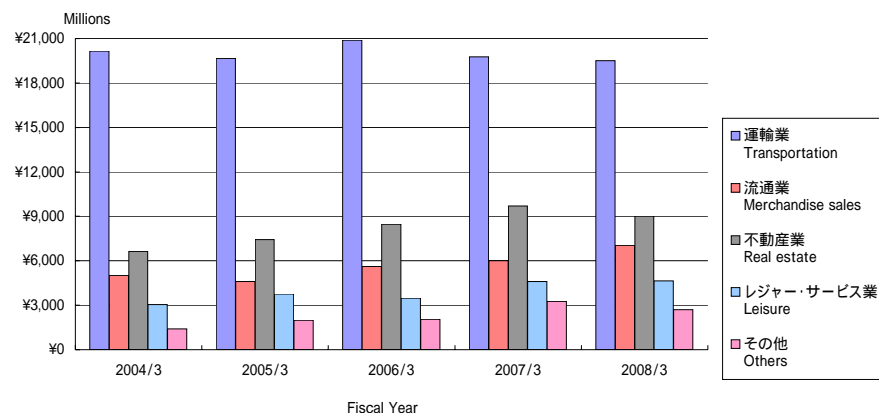
営業収益の明細 Operating revenues transaction

(100万円 millions of yen)

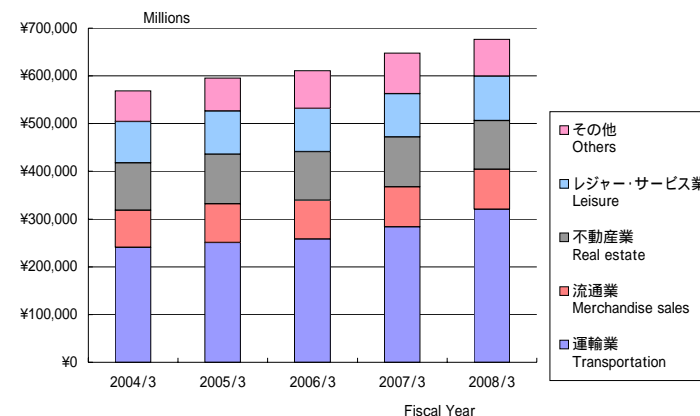
	2004/3	2005/3	2006/3	2007/3	2008/3
流通業 Merchandise sales					
百貨店業 Department stores	118,499	113,146	113,611	111,628	111,620
ストア業 Retail stores	38,190	37,865	38,779	39,761	40,865
書籍販売業 Retail stores for books	8,531	9,515	10,456	11,191	11,816
駅売店業 Retail stores at stations	10,729	10,560	10,120	9,657	9,733
その他 Others	12,882	12,687	13,098	13,472	14,402
セグメント間取引 Intersegment	2,424	2,524	2,630	2,528	2,703
合計 Total	191,258	186,299	188,697	188,240	190,141
不動産業 Real estate					
不動産賃貸業 Land and building leasing	12,618	13,284	14,918	15,455	16,850
不動産販売業 Development for selling by lots	3,723	7,903	6,186	8,485	3,303
その他 Others	967	1,134	1,295	1,294	1,508
セグメント間取引 Intersegment	1,838	1,869	1,922	1,965	2,082
合計 Total	19,148	24,192	24,322	27,201	23,745
レジャー・サービス業 Leisure					
ホテル業 Hotels	33,571	34,659	35,930	37,163	37,292
旅行業 Travel services	31,605	32,794	31,693	18,706	18,641
広告代理業 Advertising services	5,761	5,637	5,715	5,875	5,805
その他 Others	6,410	6,678	6,501	6,349	6,676
セグメント間取引 Intersegment	4,237	4,473	4,934	5,622	5,420
合計 Total	81,586	84,242	84,775	73,718	73,835
その他 Others					
ビル総合管理業 Building maintenance	7,022	6,711	7,093	8,666	8,775
車両整備業 Railway car maintenance	4,971	5,335	6,607	6,453	5,761
建築・土木業 Construction	8,446	11,131	9,745	8,171	7,015
その他 Others	101	169	729	776	787
セグメント間取引 Intersegment	21,261	25,981	27,602	33,865	33,112
合計 Total	41,804	49,330	51,777	57,933	55,451

セグメント情報 Segment information

営業利益 Operating income



総資産 Total assets



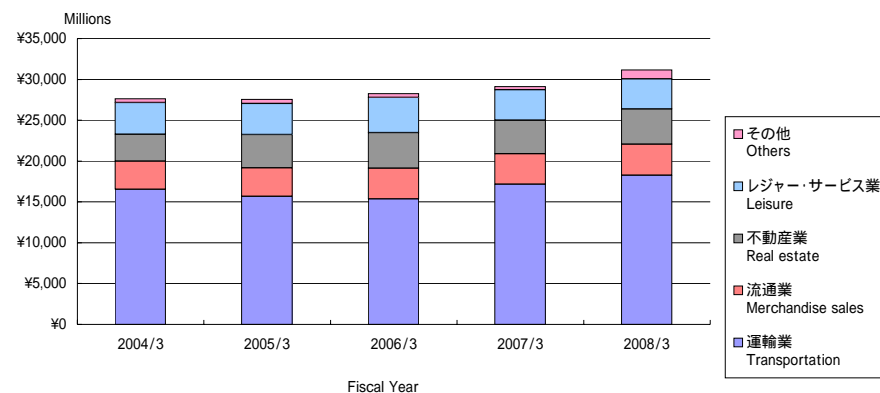
(100万円 millions of yen)

営業利益 Operating income	2004/3	2005/3	2006/3	2007/3	2008/3
運輸業 Transportation	20,160	19,671	20,896	19,760	19,513
流通業 Merchandise sales	5,008	4,603	5,614	6,007	7,044
不動産業 Real estate	6,629	7,432	8,473	9,690	9,013
レジャー・サービス業 Leisure	3,051	3,752	3,481	4,595	4,650
その他 Others	1,408	1,978	2,045	3,257	2,691
合計 Total	36,258	37,437	40,512	43,312	42,913
消去 Elimination	(34)	(340)	(574)	(1,013)	(972)
連結 Consolidated	36,223	37,096	39,937	42,298	41,941

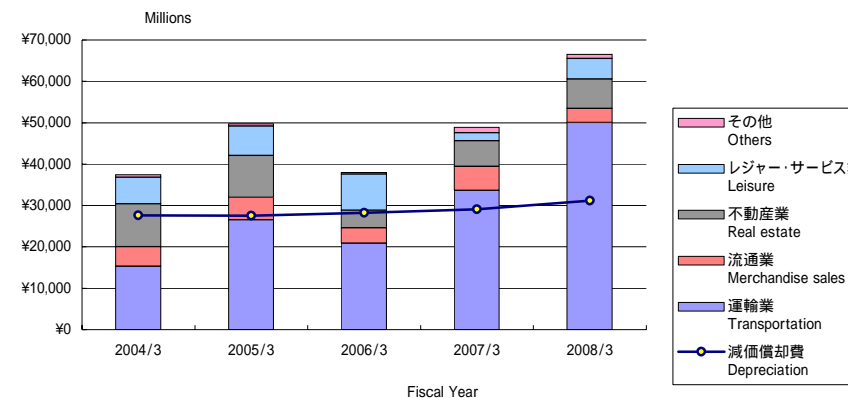
総資産 Total assets	2004/3	2005/3	2006/3	2007/3	2008/3
運輸業 Transportation	240,744	250,574	257,984	283,292	320,682
流通業 Merchandise sales	77,628	81,371	81,545	83,820	83,592
不動産業 Real estate	99,629	103,826	101,894	105,169	102,242
レジャー・サービス業 Leisure	86,134	90,329	90,111	90,520	92,698
その他 Others	64,577	69,553	79,130	84,889	77,297
合計 Total	568,715	595,655	610,666	647,692	676,513
消去 Elimination	(10,006)	(24,343)	20,034	468	(16,351)
連結 Consolidated	558,708	571,311	630,700	648,161	660,161

セグメント情報
Segment information

減価償却費 Depreciation



減価償却費と設備投資 Depreciation & Capital expenditures



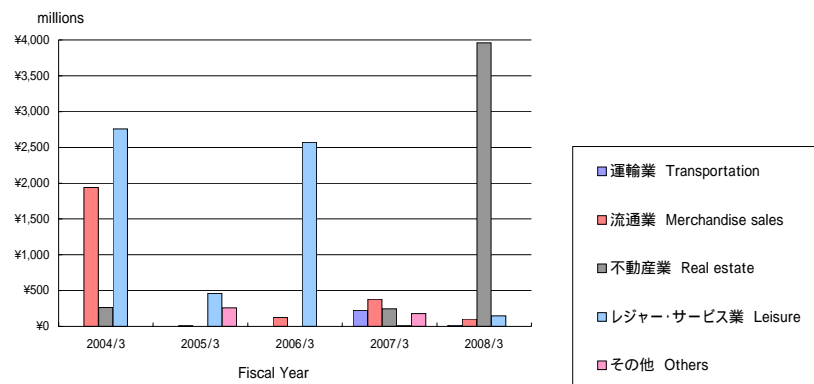
(100万円 millions of yen)

減価償却費 Depreciation	2004/3	2005/3	2006/3	2007/3	2008/3
運輸業 Transportation	16,527	15,667	15,356	17,154	18,272
流通業 Merchandise sales	3,456	3,488	3,768	3,750	3,798
不動産業 Real estate	3,294	4,090	4,334	4,102	4,293
レジャー・サービス業 Leisure	3,886	3,792	4,323	3,719	3,682
その他 Others	470	532	461	381	1,114
合計 Total	27,635	27,571	28,244	29,108	31,161
消去 Elimination	(58)	(61)	(61)	(16)	(77)
連結 Consolidated	27,577	27,509	28,183	29,091	31,084

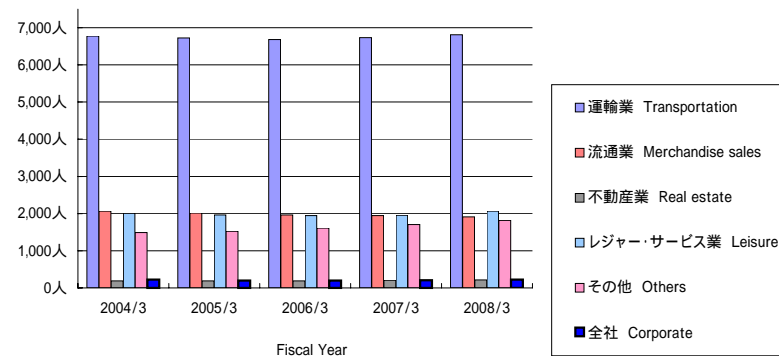
設備投資 Capital expenditures	2004/3	2005/3	2006/3	2007/3	2008/3
運輸業 Transportation	15,326	26,521	20,905	33,662	50,020
流通業 Merchandise sales	4,690	5,416	3,702	5,759	3,402
不動産業 Real estate	10,408	10,175	4,251	6,213	7,133
レジャー・サービス業 Leisure	6,374	7,112	8,719	1,898	4,969
その他 Others	627	548	378	1,342	1,031
合計 Total	37,427	49,774	37,957	48,877	66,556
消去 Elimination	(87)	(27)	(103)	(848)	(821)
連結 Consolidated	37,340	49,746	37,854	48,028	65,735

セグメント情報 Segment information

減損損失 Loss on Impairment



従業員数 Numbers of employee



(100万円 millions of yen)

減損損失 Loss on Impairment*1	2004/3	2005/3	2006/3	2007/3	2008/3
運輸業 Transportation				225	18
流通業 Merchandise sales	1,938	11	126	379	101
不動産業 Real estate	262		1	245	3,958
レジャー・サービス業 Leisure	2,756	462	2,571	8	147
その他 Others		258		178	0
合計 Total	4,957	733	2,698	1,037	4,226
消去又は全社 Elimination or corporate					
連結 Consolidated	4,957	733	2,698	1,037	4,226

(人 persons)

(人 persons)

従業員数 Numbers of employee	2004/3	2005/3	2006/3	2007/3	2008/3
運輸業 Transportation	6,779	6,721	6,686	6,731	6,812
流通業 Merchandise sales	2,066	2,019	1,962	1,944	1,909
不動産業 Real estate	189	189	192	207	211
レジャー・サービス業 Leisure	2,005	1,962	1,942	1,954	2,064
その他 Others	1,489	1,521	1,609	1,709	1,820
全社 Corporate	222	198	195	210	225
連結 Consolidated	12,750	12,610	12,586	12,755	13,041