



KEIO ELECTRIC RAILWAY CO.,LTD.

FACT BOOK 2005

Last five-year Summary(Consolidated)

(連絡先)

contact address

京王電鉄株式会社 経理部
Keio Electric Railway Co.,Ltd Finance Department

伊沢 辻本
Izawa Tsujimoto

PHONE : 042-337-3135

F A X : 042-337-5009

Contents

Data highlights (Consolidated)

営業収益 Operating revenues	1
営業利益 Operating income	1
当期純利益 Net income	1
総資産と株主資本 Total assets & Total shareholders' equity	2
利益剰余金 Retained earnings	2
キャッシュ・フロー Cash flows	3
現金及び現金同等物の期末残高 Cash and cash equivalents at end of year	3
有利子負債 Interest-bearing debt	3
連結ROA Return on assets (ROA)	4
連結ROE Return on equity (ROE)	4
算出方法 Notes	5

Financial statements (Consolidated)

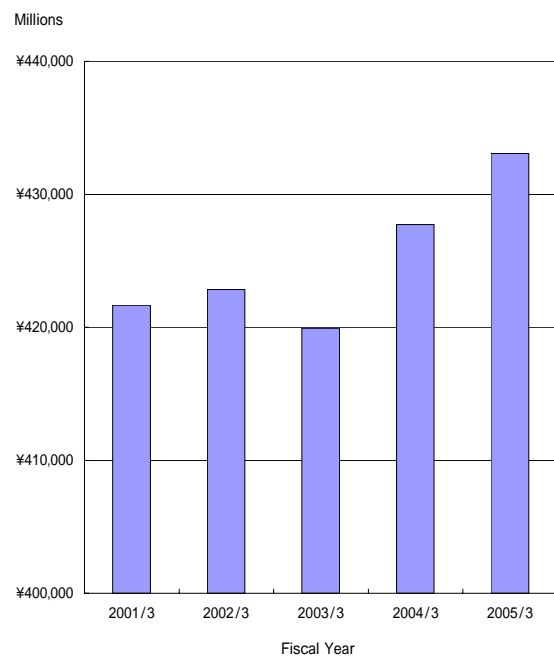
連結貸借対照表 Consolidated balance sheets	6
連結損益計算書 Consolidated statements of income	8
連結キャッシュ・フロー計算書 Consolidated statements of cash flows	9

Segment information

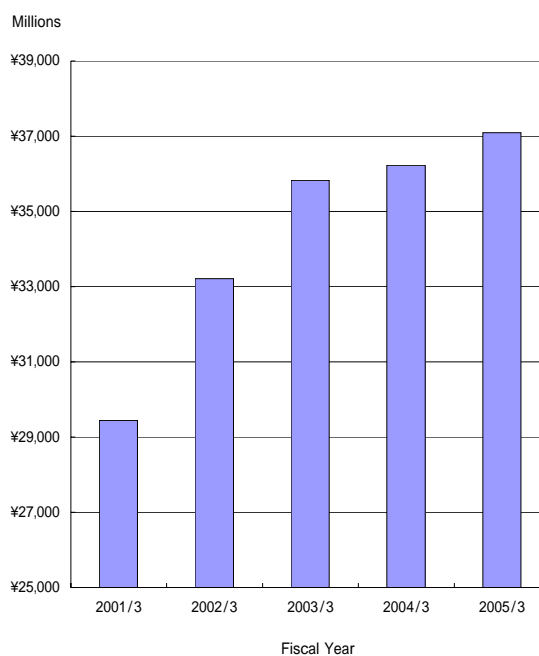
営業収益 Operating revenues	10
営業収益の明細 Operating revenues transaction	11
・運輸業 Transportation ...	11
・鉄道輸送人員の対前年増減率 ...	11
Variation ratio against previous year of passengers transported (Railways)	
・流通業 Merchandise sales ...	12
・不動産業 Real estate ...	12
・レジャー・サービス業 Leisure ...	12
・その他 Others ...	12
営業利益 Operating income	13
減価償却費 Depreciation	14
減価償却費と設備投資 Depreciation & Capital expenditures	14
総資産 Total assets	15
従業員数 Numbers of employee	15

データ・ハイライト(連結)
Data highlights (Consolidated)

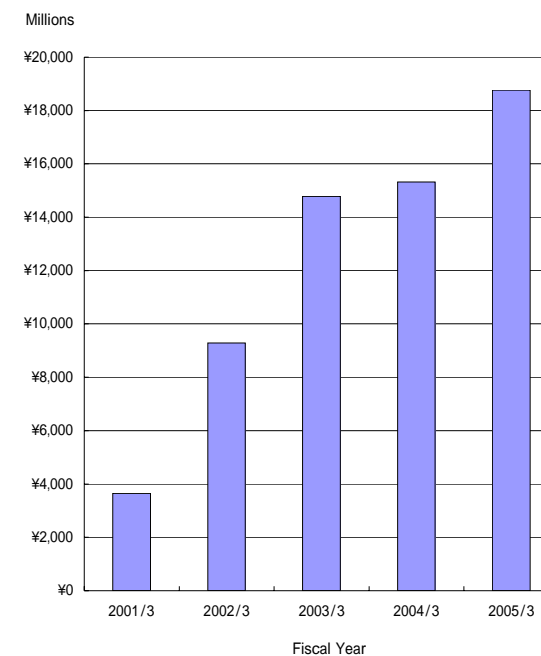
営業収益
Operating revenues



営業利益
Operating income



当期純利益
Net income

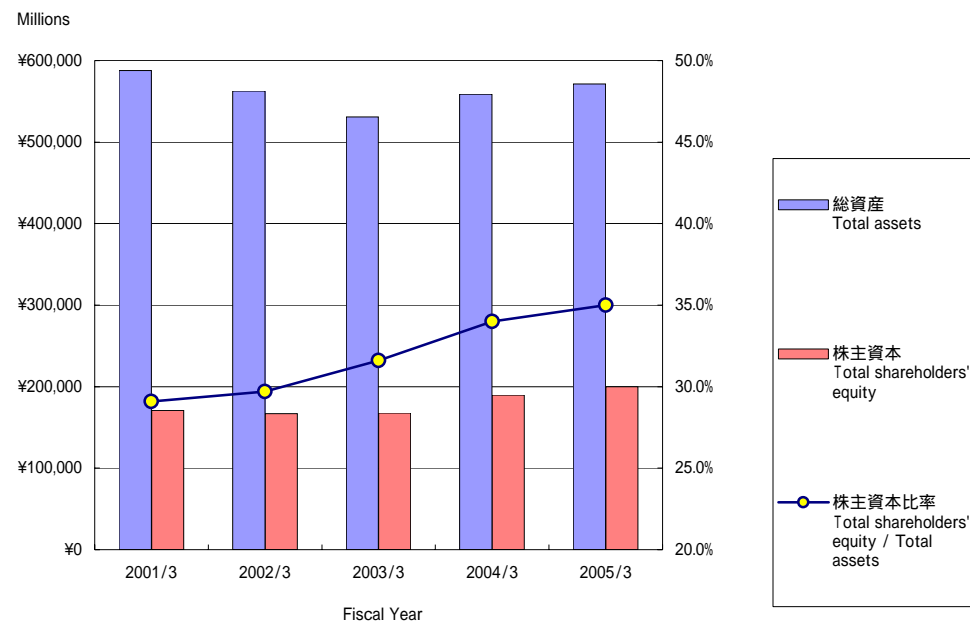


(100万円 millions of yen)

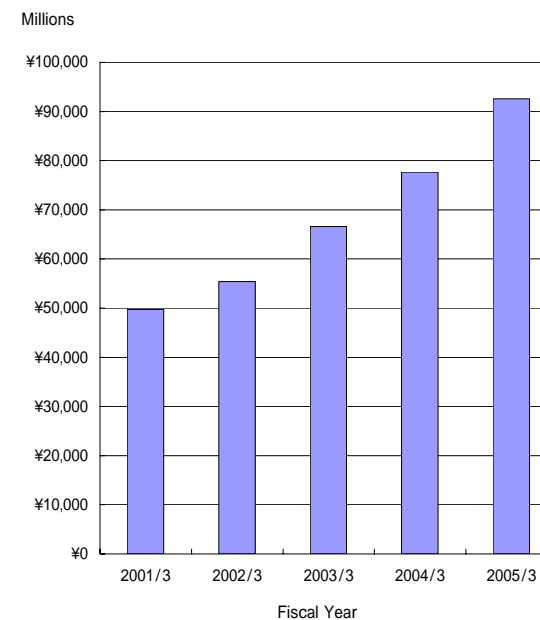
	2001/3	2002/3	2003/3	2004/3	2005/3
営業収益 Operating revenues	421,653	422,835	419,919	427,722	433,071
営業利益 Operating income	29,444	33,212	35,826	36,223	37,096
当期純利益 Net income	3,649	9,289	14,785	15,316	18,764

データ・ハイライト(連結)
Data highlights (Consolidated)

総資産と株主資本
Total assets & Total shareholders' equity



利益剰余金
Retained earnings

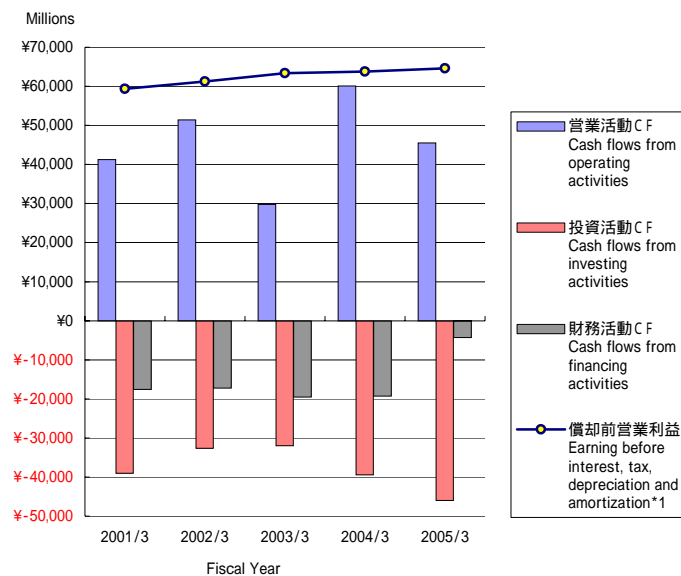


(100万円 millions of yen)

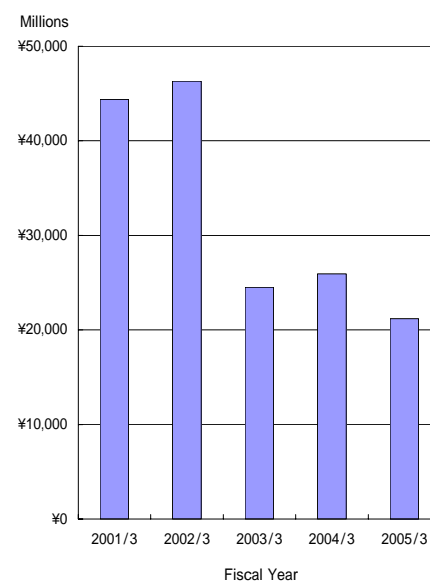
	2001/3	2002/3	2003/3	2004/3	2005/3
総資産 Total assets	587,765	562,531	530,799	558,708	571,311
株主資本 Total shareholders' equity	170,965	167,064	167,723	189,749	199,997
株主資本比率 Total shareholders' equity / Total assets	29.1%	29.7%	31.6%	34.0%	35.0%
利益剰余金 Retained earnings	49,763	55,422	66,578	77,688	92,601

データ・ハイライト(連結)
Data highlights (Consolidated)

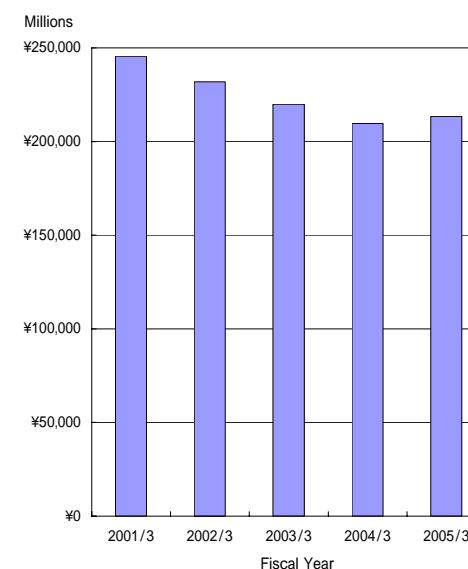
キャッシュ・フロー
Cash flows



現金及び現金同等物 の期末残高
Cash and cash equivalents at end of year



有利子負債
Interest-bearing debt

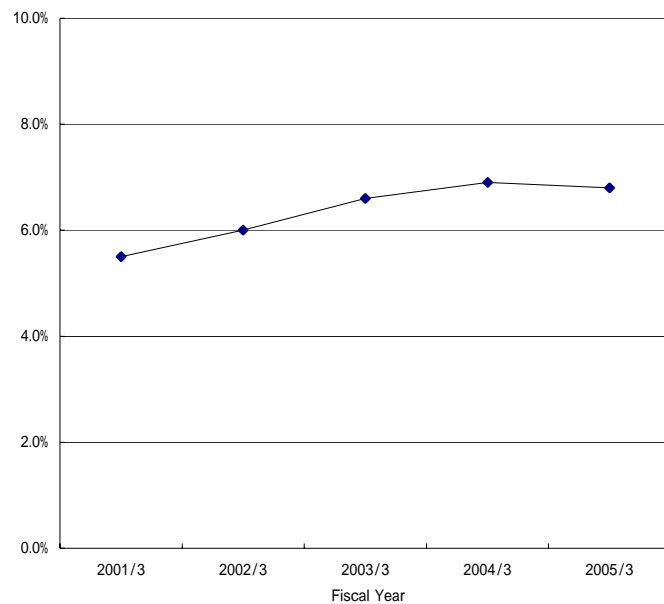


	2001/3	2002/3	2003/3	2004/3	2005/3
営業活動CF Cash flows from operating activities	41,213	51,414	29,776	60,090	45,524
投資活動CF Cash flows from investing activities	39,032	32,650	31,985	39,394	45,950
財務活動CF Cash flows from financing activities	17,599	17,241	19,567	19,285	4,314
償却前営業利益 Earning before interest, tax, depreciation and amortization*1	59,384	61,195	63,366	63,800	64,605
現金及び現金同等物 の期末残高 Cash and cash equivalents at end of year	44,381	46,295	24,515	25,928	21,192
有利子負債 Interest-bearing debt*1	245,570	231,929	219,864	209,614	213,409

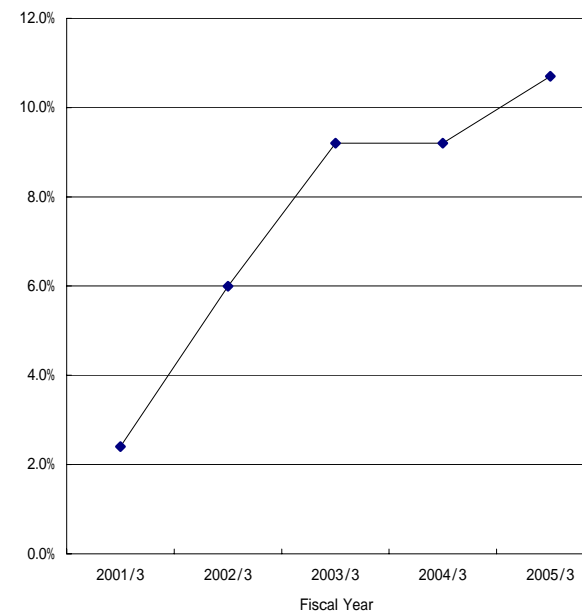
*1 Please refer to page5 about EBITDA and Interest-bearing debt above.

データ・ハイライト(連結)
Data highlights (Consolidated)

連結ROA
Return on assets (ROA)



連結ROE
Return on equity (ROE)



	2001/3	2002/3	2003/3	2004/3	2005/3
連結ROA Return on assets (ROA) *1	5.5%	6.0%	6.6%	6.9%	6.8%
連結ROE Return on equity (ROE) *1	2.4%	6.0%	9.2%	9.2%	10.7%

*1 Please refer to page5 about ROA and ROE above.

データ・ハイライト(連結) Data highlights (Consolidated)

・償却前営業利益 = 営業利益 + 減価償却費
Earning before Interest, tax, depreciation and amortization = Operating income + Depreciation

・有利子負債 = 借入金 + 社債 + 鉄道・運輸機構未払金
Interest-bearing debt = Borrowings + Bonds + Long-term accounts payable from other financial institutions

・連結ROA = (経常利益 + 支払利息) / 期中平均総資産 × 100
Return on assets (ROA) = (Recurring income + Interest expense) / Average total assets × 100

総資産にその他有価証券評価差額金とそれに関する繰延税金資産・負債を加減算することでその他有価証券の時価評価の影響(損失として処理したものを除く)を排除している。
Excluding the effects of unrealized gains/losses on other securities in total assets

・連結ROE = 当期純利益 / 期中平均株主資本 × 100
Return on equity (ROE) = Net income / Average total shareholders' equity × 100

株主資本にその他有価証券評価差額金を加減算している。
Excluding the effects of unrealized gains/losses on other securities in total shareholders' equity

当社においては、決算期ごとの数値の連続性を確保し、比較を行いやすくするため、連結ROA,連結ROEを以上の数式にて算出している。これらは、当社が内部管理に使用している指標である。

We use the unique calculation method for the ROA and the ROE for the convenience of comparability.

財務諸表(連結)
Financial statements (Consolidated)

連結貸借対照表 Consolidated balance sheets

(100万円 millions of yen)

	2001/3	2002/3	2003/3	2004/3	2005/3
資産の部 Assets					
流動資産 Current assets	107,974	108,182	84,895	89,092	82,994
現金及び預金 Cash and bank deposits	26,380	47,397	25,903	24,312	22,239
受取手形及び売掛金 Notes and accounts receivable,trade	27,203	25,106	25,127	25,817	26,239
短期貸付金 Short-term loans receivable	3,869	269	224	3,371	454
有価証券 Short-term investments	16,618	237	986	20	34
たな卸資産 Inventories	29,386	29,058	26,807	29,151	28,157
繰延税金資産 Deferred tax assets	2,480	3,954	3,659	4,158	3,681
その他 Others	2,341	2,559	2,435	2,535	2,431
貸倒引当金 Allowances for doubtful accounts	305	400	250	274	245
固定資産 Fixed assets	479,790	454,348	445,903	469,615	488,316
有形固定資産 Property and equipment	387,770	382,233	388,981	387,271	406,637
建物及び構築物 Buildings and structures	244,983	241,081	238,223	234,197	240,156
機械装置及び運搬具 Machinery,rolling stock and equipment	34,675	34,400	33,359	32,640	32,779
土地 Land	86,620	86,243	88,350	96,847	105,386
建設仮勘定 Construction in progress	12,085	11,953	20,778	15,248	19,859
その他 Others	9,406	8,554	8,270	8,336	8,455
無形固定資産 Intangible fixed assets	3,180	3,486	4,060	3,777	3,318
投資その他の資産 Investments and other fixed assets	88,839	68,629	52,862	78,567	78,360
投資有価証券 Investments in securities	70,600	52,224	32,111	58,943	57,904
長期貸付金 Long-term loans receivable	144	131	172	398	514
繰延税金資産 Deferred tax assets	7,507	8,515	10,944	7,940	8,366
その他 Others	10,686	8,332	10,197	11,709	11,987
貸倒引当金 Allowances for doubtful accounts	99	575	562	425	412
資産合計 Total Assets	587,765	562,531	530,799	558,708	571,311

財務諸表(連結)
Financial statements (Consolidated)

連結貸借対照表 Consolidated balance sheets

(100万円 millions of yen)

	2001/3	2002/3	2003/3	2004/3	2005/3
負債の部 Liabilities					
流動負債 Current liabilities	134,300	143,169	131,916	142,046	140,862
支払手形及び買掛金 Notes and accounts payable,trade	20,007	21,384	20,397	21,781	23,095
1年以内償還社債 Current portion of bonds	-	1,421	-	-	-
短期借入金 Short-term loans payable	56,912	55,229	54,935	52,236	50,410
未払法人税等 Income taxes payable	4,921	7,714	4,433	10,958	7,500
前受金 Advances received	7,510	7,709	7,955	8,756	9,438
賞与引当金 Reserve for employees' bonuses	3,476	3,412	3,102	3,031	2,646
その他の引当金 Other reserves	115	206	221	471	393
その他 Others	41,356	46,091	40,871	44,811	47,376
固定負債 Long term liabilities	264,863	237,774	218,952	217,528	223,413
社債 Bonds	51,421	50,000	50,000	50,000	60,000
長期借入金 Long-term loans payable	121,802	112,797	105,301	99,571	96,452
長期未払金 Long-term accounts payable	18,385	12,586	9,725	7,898	6,615
繰延税金負債 Deferred tax liabilities	8,488	-	-	5,322	5,684
退職給付引当金 Reserve for retirement benefits	45,744	42,223	33,660	31,436	28,395
役員退職慰労金引当金 Reserve for retirement benefits to directors and corporate auditors	805	845	873	675	665
その他 Others	18,215	19,321	19,391	22,622	25,599
特別法上の準備金 Reserve under special act	16,423	14,077	11,730	9,384	7,038
特定都市鉄道整備準備金 Special reserve for expansion of railway transport capacity	16,423	14,077	11,730	9,384	7,038
負債合計 Total liabilities	415,586	395,021	362,599	368,959	371,314
少数株主持分 Minority shareholders' equity in consolidated subsidiaries					
少数株主持分 Minority shareholders' equity in consolidated subsidiaries	1,213	444	476	-	-
資本の部 Shareholders' equity					
資本金 Common stock	59,023	59,023	59,023	59,023	59,023
資本剰余金 Additional paid-in capital	42,019	42,019	42,019	42,017	42,016
利益剰余金 Retained earnings	49,763	55,422	66,578	77,688	92,601
その他有価証券評価差額金 Unrealized gains on other securities,net of tax	20,159	10,658	4,124	19,959	19,624
自己株式 Treasury stock,at cost	0	60	4,022	8,938	13,269
資本合計 Total shareholders' equity	170,965	167,064	167,723	189,749	199,997
負債、少数株主持分及び資本合計 Total Liabilities and shareholders' equity	587,765	562,531	530,799	558,708	571,311

財務諸表(連結)
Financial statements (Consolidated)

連結損益計算書 Consolidated statements of income

(100万円 millions of yen)

	2001/3	2002/3	2003/3	2004/3	2005/3
営業損益の部 Operating income and expenses					
営業収益 Operating revenues	421,653	422,835	419,919	427,722	433,071
営業費 Operating costs and expenses	392,208	389,622	384,093	391,498	395,974
運輸業等営業費及び売上原価 Operating costs	346,324	344,173	338,644	343,009	346,242
販売費及び一般管理費 Selling,general and administrative expenses	45,884	45,449	45,449	48,489	49,732
営業利益 Operating income	29,444	33,212	35,826	36,223	37,096
営業外損益の部 Non operating income and expenses					
営業外収益 Non operating income	4,370	2,889	2,294	2,450	2,362
受取利息及び配当金 Interest and dividend income	867	571	539	433	505
持分法による投資利益 Equity in earnings of affiliates and unconsolidated subsidiaries	98	57	61	75	61
その他 Others	3,405	2,260	1,693	1,942	1,795
営業外費用 Non operating expenses	10,121	9,647	8,505	7,550	7,735
支払利息 Interest expense	7,382	6,714	6,132	5,423	4,984
その他 Others	2,739	2,933	2,373	2,127	2,751
経常利益 Recurring income	23,693	26,454	29,615	31,123	31,723
特別損益の部 Extraordinary profit and loss					
特別利益 Extraordinary profit	6,306	2,346	3,909	4,718	4,633
固定資産売却益 Gains on sales of property and equipment	-	-	247	203	472
工事負担金等受入額 Subsidy received from Tokyo Metropolitan Government and other	3,895	-	1,237	785	676
投資有価証券売却益 Gains on sales of investments in securities	65	-	-	1,293	858
特定都市鉄道整備準備金取崩額 Reversal of special reserve for expansion of railway transport capacity	2,346	2,346	2,346	2,346	2,346
その他 Others	-	-	78	90	279
特別損失 Extraordinary loss	24,214	12,198	6,977	8,729	4,368
減損損失 Loss on Impairment	-	-	-	4,957	733
販売土地評価損 Loss on revaluation of real estate inventories for sale	-	514	-	-	-
固定資産除却損 Loss on disposal of property and equipment	1,341	1,309	1,200	2,328	1,562
固定資産評価損 Loss on revaluation of property and equipment	-	6,574	-	-	-
固定資産圧縮損 Advance depreciation of fixed assets	3,895	-	1,463	842	1,137
投資有価証券売却損 Loss on sales of investments in securities	-	-	425	-	-
投資有価証券評価損 Loss on revaluation of investments in securities	853	1,291	1,876	368	118
退職給付会計基準変更時差異償却額 Amortization of transition amount related to retirement benefits	17,067	-	-	-	-
退職金制度変更損失 Loss on the revision of the retirement benefits plan	-	-	-	-	688
特別退職金 Special retirement payments	1,056	2,507	1,847	-	-
その他 Others	-	-	163	232	127
税金等調整前当期純利益 Net Income before income taxes and minority interest in income (loss) of consolidated subsidiaries	5,785	16,602	26,546	27,112	31,988
法人税、住民税及び事業税 Income taxes (Current)	8,775	11,316	8,955	14,820	12,581
法人税等調整額 Income taxes (Deferred)	6,274	4,037	2,770	3,042	642
少数株主損益 Minority interest in income (loss) of consolidated subsidiaries	363	34	35	18	-
当期純利益 Net income	3,649	9,289	14,785	15,316	18,764

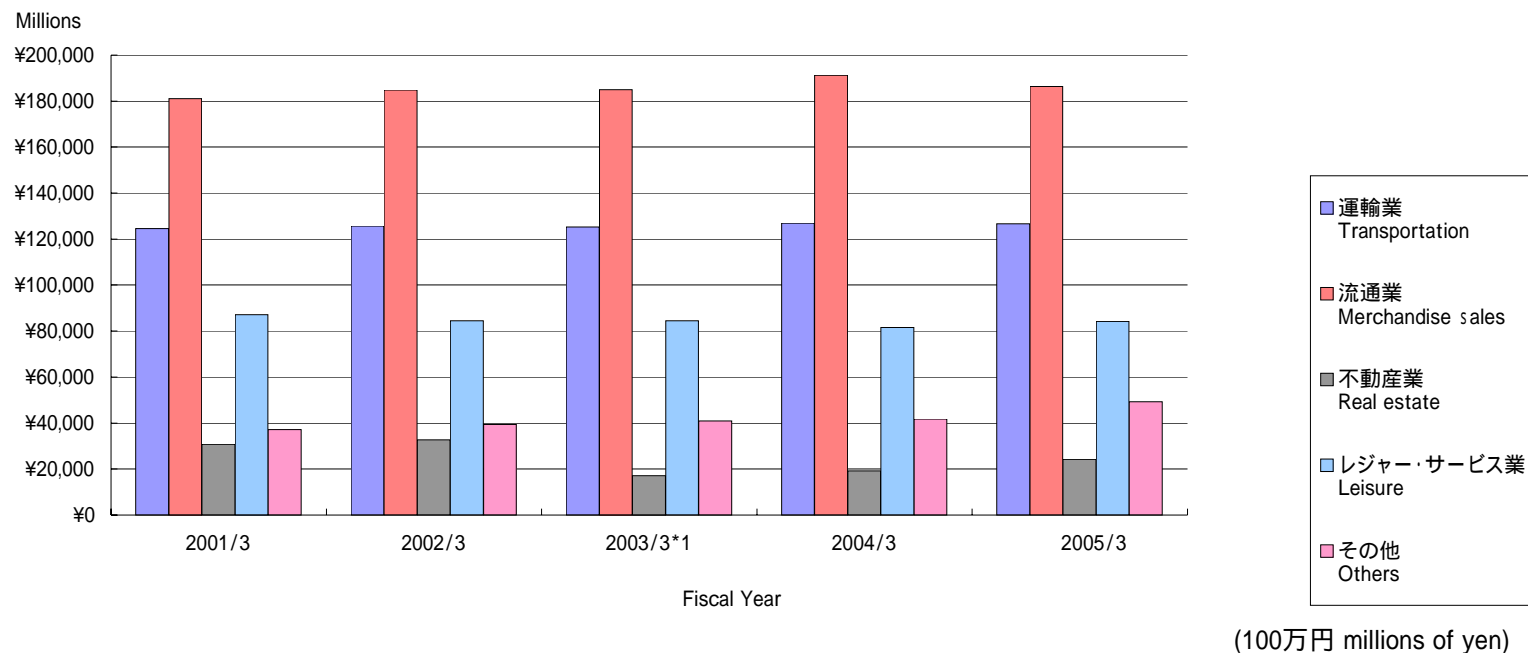
財務諸表(連結)
Financial statements (Consolidated)
連結キャッシュ・フロー計算書 Consolidated statements of cash flows

(100万円 millions of yen)

	2001/3	2002/3	2003/3	2004/3	2005/3
税金等調整前当期純利益 Net income before income taxes and minority interest in income (loss) of consolidated subsidiaries	5,785	16,602	26,546	27,112	31,988
減価償却費 Depreciation	29,940	27,982	27,540	27,577	27,509
減損損失 Loss on Impairment	-	-	-	4,957	733
連結調整勘定償却額 Amortization of consolidation adjusting account	-	174	57	224	-
退職給付引当金の増減額 (Decrease) Increase in reserve for retirement benefits	13,194	3,521	8,626	2,224	3,041
特定都市鉄道整備準備金の増減額 (Decrease) Increase in special reserve for expansion of railway transport capacity	2,346	2,346	2,346	2,346	2,346
固定資産評価損 Loss on revaluation of property and equipment	-	6,574	-	-	-
販売土地評価損 Loss on revaluation of real estate inventories for sale	217	514	411	609	840
投資有価証券評価損 Loss on revaluation of investments in securities	853	1,291	1,876	368	118
固定資産除却損 Loss on disposal of property and equipment	1,234	1,372	1,564	2,545	1,623
固定資産圧縮損 Advance depreciation of fixed assets	4,746	470	1,463	842	1,137
受取利息及び受取配当金 Interest and dividend income	867	571	539	433	505
支払利息 Interest expense	7,382	6,714	6,132	5,423	4,984
工事負担金受入額及び補助金 Subsidy received from Tokyo Metropolitan Government and other	4,462	452	1,237	785	676
投資有価証券売却益 Gains on sales of investments in securities	-	-	-	1,293	858
営業債権の増減額 (Decrease) Increase in notes and accounts receivables	2,034	2,273	34	568	421
たな卸資産の増減額 (Decrease) Increase in inventories	2,443	115	110	1,336	1,109
営業債務の増減額 (Decrease) Increase in notes and accounts payable	1,441	3,605	5,853	1,633	605
その他 Other,net	184	5,334	786	8,965	4,090
小計 Subtotal	57,345	66,135	47,629	73,496	66,890
利息及び配当金の受取額 Interest and dividends received	903	579	556	316	509
利息の支払額 Interest paid	6,719	6,735	6,170	5,434	4,995
法人税等の支払額 Income taxes paid	10,316	8,565	12,239	8,288	16,879
営業活動によるキャッシュ・フロー Cash flows from operating activities	41,213	51,414	29,776	60,090	45,524
有形固定資産の取得による支出 Payments for purchase of property and equipment	39,965	34,547	35,490	39,765	48,319
工事負担金及び補助金の受入れ Subsidy received from Tokyo Metropolitan Government and other	2,001	577	1,473	1,236	1,089
投資有価証券の取得による支出 Payments for purchase of securities	133	1,169	4,001	403	55
投資有価証券売却及び償還による収入 Proceeds from sales and redemption of securities	241	176	9,611	2,576	1,457
その他 Other,net	1,175	2,312	3,579	3,038	123
投資活動によるキャッシュ・フロー Cash flows from investing activities	39,032	32,650	31,985	39,394	45,950
短期借入金の純減少額 Decrease in short-term loans payable	334	717	537	2,170	1,080
長期借入れによる収入 Increase in long-term loans payable	3,600	4,200	6,640	7,210	9,050
長期借入金の返済による支出 Repayment of long-term loans payable	13,920	14,171	13,892	13,467	12,914
社債の償還による支出 Payment for redemption of bonds	-	-	1,421	-	-
社債の発行による収入 Proceeds from issuance of bonds	-	-	-	-	10,000
長期未払金の返済による支出 Repayment of long-term accounts payable	2,815	2,958	2,861	1,827	1,283
自己株式の買入消却による支出 Purchase of treasury stock to offset additional paid-in capital	592	-	-	-	-
自己株式の取得による支出 Purchase of treasury stock	-	-	3,961	4,939	4,419
配当金の支払額 Cash dividends paid	3,539	3,535	3,534	4,111	3,755
その他 Other,net	2	59	-	21	88
財務活動によるキャッシュ・フロー Cash flows from financing activities	17,599	17,241	19,567	19,285	4,314
現金及び現金同等物に係る換算差額 Exchange gain on cash and cash equivalents	11	14	2	3	5
現金及び現金同等物の増減額 Net increase in cash and cash equivalents	15,407	1,536	21,780	1,413	4,735
現金及び現金同等物の期首残高 Cash and cash equivalents at beginning of year	59,788	44,381	46,295	24,515	25,928
新規連結に伴う現金及び現金同等物の増加額 Cash and cash equivalents increase due to consolidation of subsidiaries	-	377	-	-	-
現金及び現金同等物の期末残高 Cash and cash equivalents at end of year	44,381	46,295	24,515	25,928	21,192

セグメント情報
Segment information

営業収益 Operating revenues



	2001/3	2002/3	2003/3*1	2004/3	2005/3
運輸業 Transportation	124,631	125,613	125,297	126,914	126,700
流通業 Merchandise sales	181,032	184,797	185,011	191,258	186,299
不動産業 Real estate	30,730	32,762	17,051	19,148	24,192
レジャー・サービス業 Leisure	87,150	84,521	84,457	81,586	84,242
その他 Others	37,201	39,388	40,966	41,804	49,330
合計 Total	460,746	467,084	452,785	460,712	470,764
消去 Elimination	(39,093)	(44,248)	(32,865)	(32,989)	(37,693)
連結 Consolidated	421,653	422,835	419,919	427,722	433,071

*1 On the Year ended 31st March 2003, the arrangement of industry segments was changed.

セグメント情報
Segment information

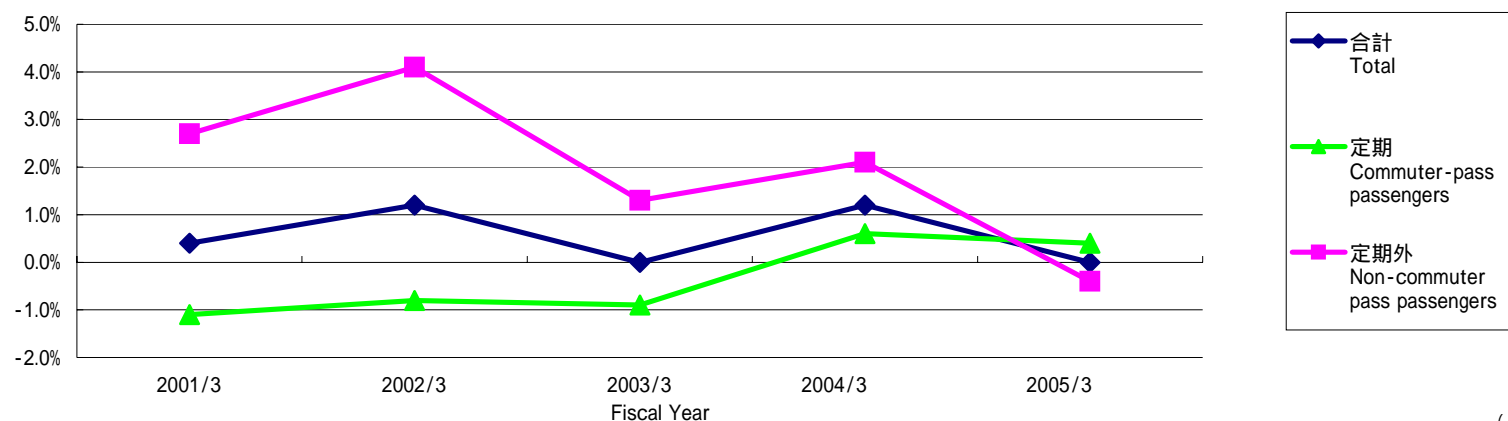
営業収益の明細 Operating revenues transaction

(100万円 millions of yen)

	2001/3	2002/3	2003/3*1	2004/3	2005/3
運輸業 Transportation					
鉄道事業 Railways	75,643	77,480	78,116	79,303	79,502
バス事業 Bus services	25,845	25,799	25,693	26,528	27,181
タクシー業 Taxi services	17,083	16,263	15,418	14,873	14,071
その他 Others	2,866	2,892	2,828	2,981	3,099
セグメント間取引 Intersegment	3,191	3,177	3,240	3,227	2,845
合計 Total	124,631	125,613	125,297	126,914	126,700

*1 On the Year ended 31st March 2003, the arrangement of industry segments was changed.

鉄道輸送人員の対前年増減率 Variation ratio against previous year of passengers transported(railways)



	2001/3	2002/3	2003/3	2004/3	2005/3
定期 Commuter-pass passengers	1.1	0.8	0.9	0.6	0.4
定期外 Non-commuter pass passengers	2.7	4.1	1.3	2.1	0.4
合計 Total	0.4	1.2	0.0	1.2	0.0

セグメント情報
Segment information

営業収益の明細 Operating revenues transaction

(100万円 millions of yen)

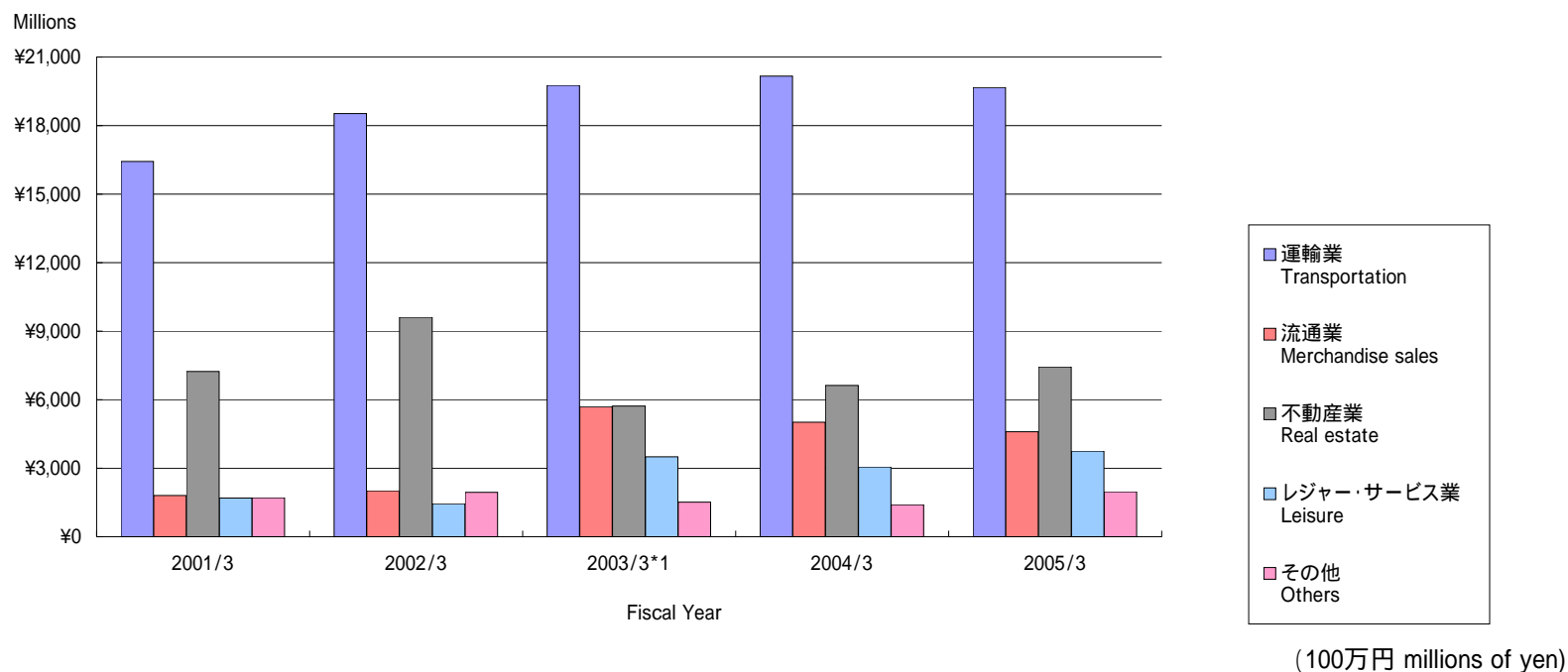
	2001/3	2002/3	2003/3*1	2004/3	2005/3
流通業 Merchandise sales					
百貨店業 Department stores	115,925	117,783	113,643	118,499	113,146
ストア業 Retail stores	35,991	36,943	37,481	38,190	37,865
駅売店業 Retail stores at stations *2	-	-	-	10,729	10,560
書籍販売業 Retail stores for books *2	-	-	-	8,531	9,515
その他 Others	26,680	27,310	31,555	12,882	12,687
セグメント間取引 Intersegment	2,434	2,760	2,331	2,424	2,524
合計 Total	181,032	184,797	185,011	191,258	186,299
不動産業 Real estate					
不動産賃貸業 Land and building leasing	14,381	15,615	12,419	12,618	13,284
不動産販売業 Development for selling by lots	1,602	2,143	1,904	3,723	7,903
その他 Others	834	886	990	967	1,134
セグメント間取引 Intersegment	13,911	14,117	1,736	1,838	1,869
合計 Total	30,730	32,762	17,051	19,148	24,192
レジャー・サービス業 Leisure					
旅行業 Travel services	37,180	34,479	33,907	31,605	32,794
ホテル業 Hotels	35,605	34,511	34,516	33,571	34,659
広告代理業 Advertising services	5,088	5,514	5,791	5,761	5,637
その他 Others	5,101	5,573	6,056	6,410	6,678
セグメント間取引 Intersegment	4,173	4,443	4,186	4,237	4,473
合計 Total	87,150	84,521	84,457	81,586	84,242
その他 Others					
ビル清掃・管理業 Building maintenance	6,029	6,884	6,904	7,022	6,711
車両整備業 Railway car maintenance	5,396	4,585	4,690	4,971	5,335
建築・土木業 Construction	10,363	8,161	7,902	8,446	11,131
その他 Others	30	8	99	101	169
セグメント間取引 Intersegment	15,381	19,749	21,370	21,261	25,981
合計 Total	37,201	39,388	40,966	41,804	49,330

*1 On the Year ended 31st March 2003, the arrangement of industry segments was changed.

*2 Operating revenues of Retail stores at stations and Retail stores for books between 2001/3 and 2003/03 are included in Others.

セグメント情報
Segment information

営業利益 Operating income

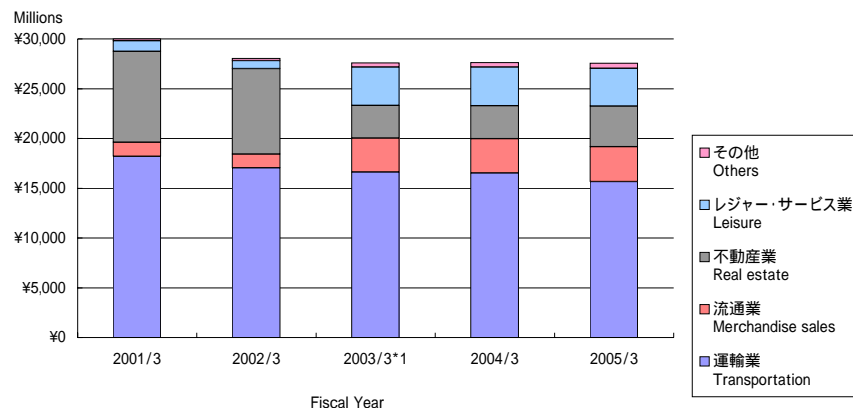


	2001/3	2002/3	2003/3*1	2004/3	2005/3
運輸業 Transportation	16,433	18,529	19,759	20,160	19,671
流通業 Merchandise sales	1,801	2,013	5,697	5,008	4,603
不動産業 Real estate	7,243	9,618	5,722	6,629	7,432
レジャー・サービス業 Leisure	1,700	1,450	3,504	3,051	3,752
その他 Others	1,714	1,941	1,510	1,408	1,978
合計 Total	28,893	33,552	36,194	36,258	37,437
消去 Elimination	(550)	(339)	(367)	(34)	(340)
連結 Consolidated	29,444	33,212	35,826	36,223	37,096

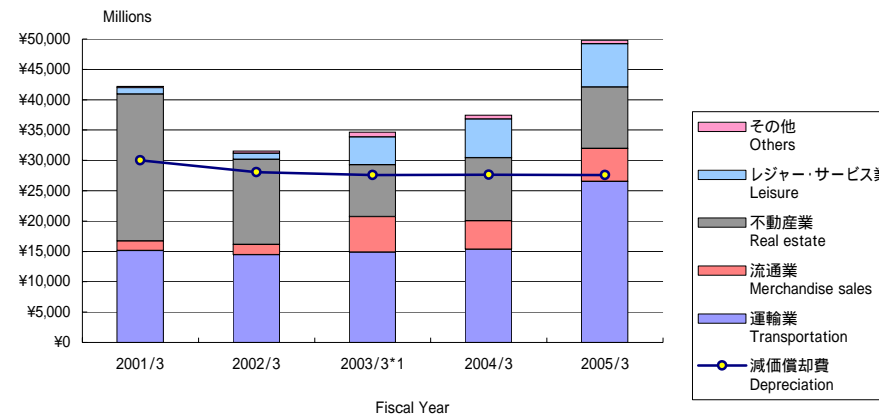
*1 On the Year ended 31st March 2003, the arrangement of industry segments was changed.

セグメント情報
Segment information

減価償却費 Depreciation



減価償却費と設備投資 Depreciation & Capital expenditures



(100万円 millions of yen)

減価償却費 Depreciation

	2001/3	2002/3	2003/3*1	2004/3	2005/3
運輸業 Transportation	18,206	17,033	16,608	16,527	15,667
流通業 Merchandise sales	1,396	1,383	3,440	3,456	3,488
不動産業 Real estate	9,142	8,599	3,265	3,294	4,090
レジャー・サービス業 Leisure	1,048	790	3,857	3,886	3,792
その他 Others	211	236	423	470	532
合計 Total	30,005	28,043	27,595	27,635	27,571
消去 Elimination	(64)	(60)	(55)	(58)	(61)
連結 Consolidated	29,940	27,982	27,540	27,577	27,509

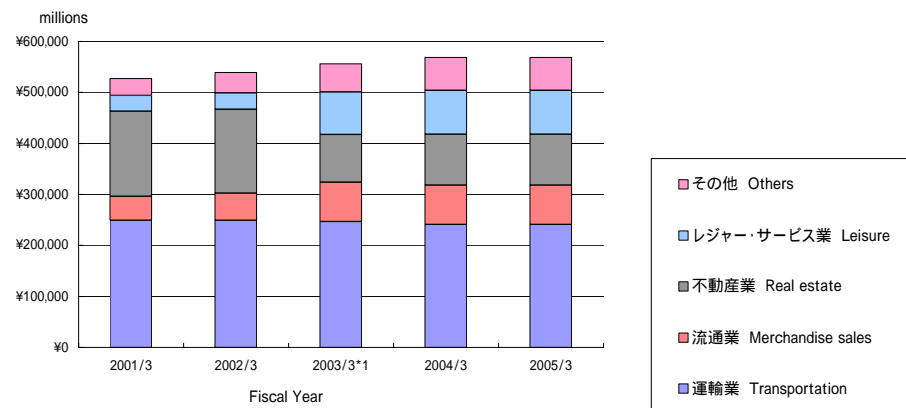
設備投資 Capital expenditures

	2001/3	2002/3	2003/3*1	2004/3	2005/3
運輸業 Transportation	15,150	14,456	14,872	15,326	26,521
流通業 Merchandise sales	1,583	1,702	5,858	4,690	5,416
不動産業 Real estate	24,218	13,996	8,521	10,408	10,175
レジャー・サービス業 Leisure	1,049	1,040	4,629	6,374	7,112
その他 Others	187	332	787	627	548
合計 Total	42,189	31,529	34,669	37,427	49,774
消去 Elimination	(38)	(193)	(56)	(87)	(27)
連結 Consolidated	42,150	31,335	34,612	37,340	49,746

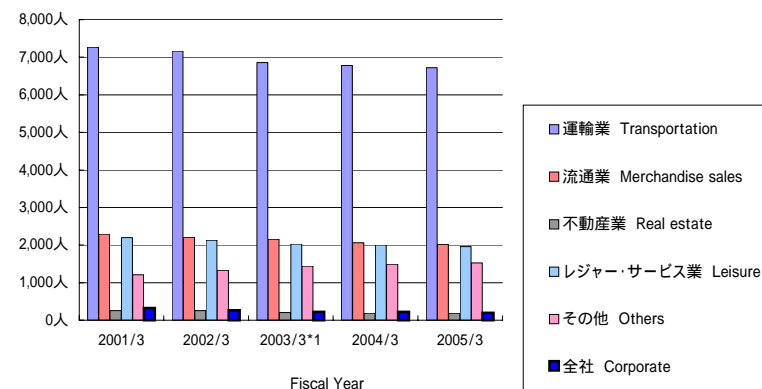
*1 On the Year ended 31st March 2003, the arrangement of industry segments was changed.

セグメント情報 Segment information

総資産 Total assets



従業員数 Numbers of employee



(100万円 millions of yen)

総資産 Total assets	2001/3	2002/3	2003/3*1	2004/3	2005/3
運輸業 Transportation	249,376	249,297	246,353	240,744	250,574
流通業 Merchandise sales	46,859	52,921	77,340	77,628	81,371
不動産業 Real estate	166,707	164,865	93,663	99,629	103,826
レジャー・サービス業 Leisure	30,850	31,667	83,706	86,134	90,329
その他 Others	33,109	40,301	54,978	64,577	69,553
合計 Total	526,903	539,054	556,041	568,715	595,655
消去又は全社 Elimination or corporate	60,861	23,476	(25,242)	(10,006)	(24,343)
連結 Consolidated	587,765	562,531	530,799	558,708	571,311

(人 persons)

従業員数 Numbers of employee	2001/3	2002/3	2003/3*1	2004/3	2005/3
運輸業 Transportation	7,271	7,164	6,862	6,779	6,721
流通業 Merchandise sales	2,293	2,209	2,155	2,066	2,019
不動産業 Real estate	257	252	201	189	189
レジャー・サービス業 Leisure	2,201	2,126	2,029	2,005	1,962
その他 Others	1,207	1,328	1,444	1,489	1,521
全社 Corporate	323	264	219	222	198
連結 Consolidated	13,552	13,343	12,910	12,750	12,610

*1 On the Year ended 31st March 2003, the arrangement of industry segments was changed.