



Keio Corporation

FACT BOOK 2010

Last five-year Summary(Consolidated)

(連絡先)

contact address

京王電鉄株式会社 総合企画本部 経理部
Keio Corporation

齋藤 金子
Saito Kaneko

PHONE : 042-337-3135

F A X : 042-374-9810

Contents

Data highlights [Consolidated]

営業収益 Operating revenue	1
営業利益 Operating income	1
当期純利益 Net income	1
総資産と純資産 Total assets & Net assets	2
利益剰余金 Retained earnings	2
キャッシュ・フロー Cash flows	3
現金及び現金同等物の期末残高 Cash and cash equivalents at end of period	3
有利子負債 Interest-bearing debt	3

Financial statements [Consolidated]

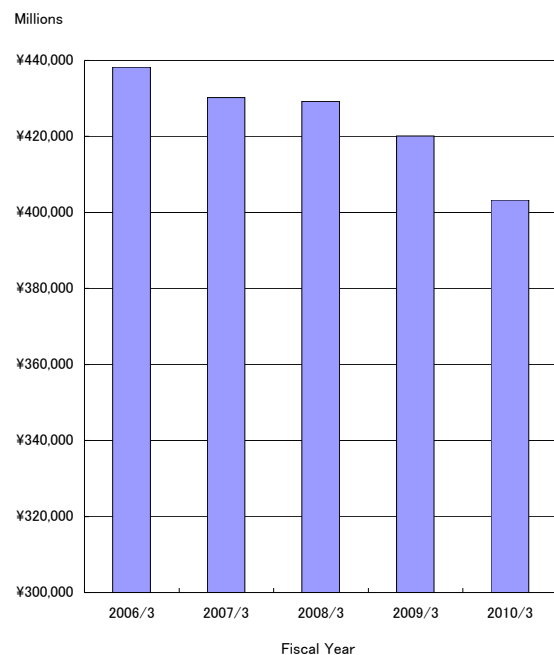
連結貸借対照表 Consolidated balance sheets	4
連結損益計算書 Consolidated statements of income	6
連結キャッシュ・フロー計算書 Consolidated statements of cash flows	7

Segment information

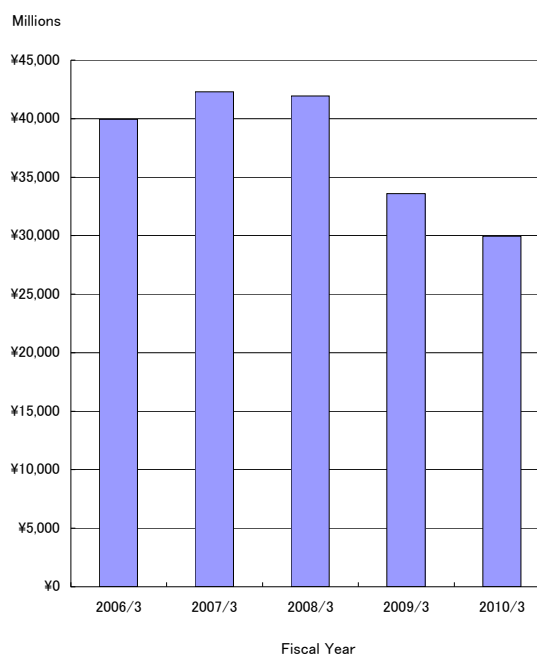
営業収益 Operating revenue	8
営業収益の明細 Operating revenues transaction	9
・運輸業 Transportation … 9	
・鉄道輸送人員の対前年増減率 …9	
Variation ratio against previous year of passengers transported (Railways)	
・流通業 Merchandise sales … 10	
・不動産業 Real estate … 10	
・レジャー・サービス業 Leisure … 10	
・その他 Others … 10	
営業利益 Operating income	11
総資産 Total assets	11
減価償却費 Depreciation and amortization	12
減価償却費と設備投資 Depreciation and amortization & Capital expenditures	12
従業員数 Numbers of employee	13

データ・ハイライト〔連結〕
Data highlights [Consolidated]

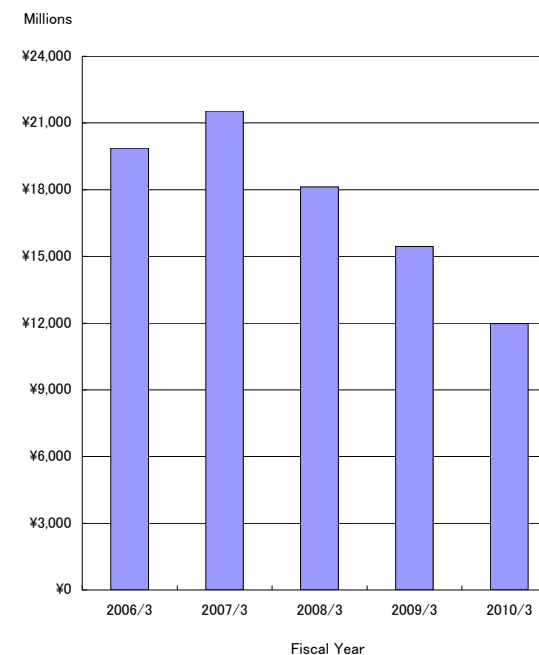
営業収益
Operating revenue



営業利益
Operating income



当期純利益
Net income

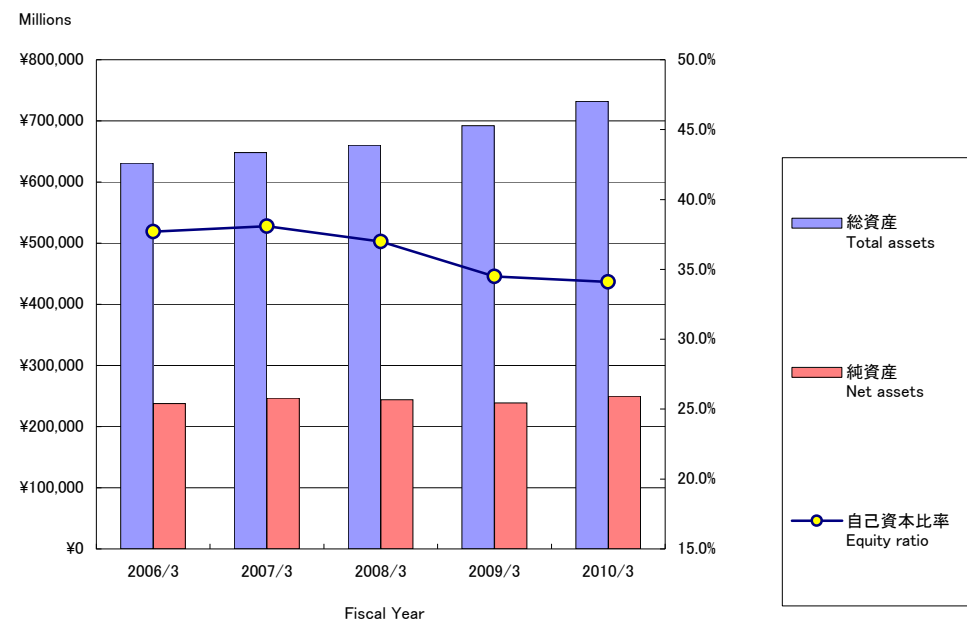


(100万円 millions of yen)

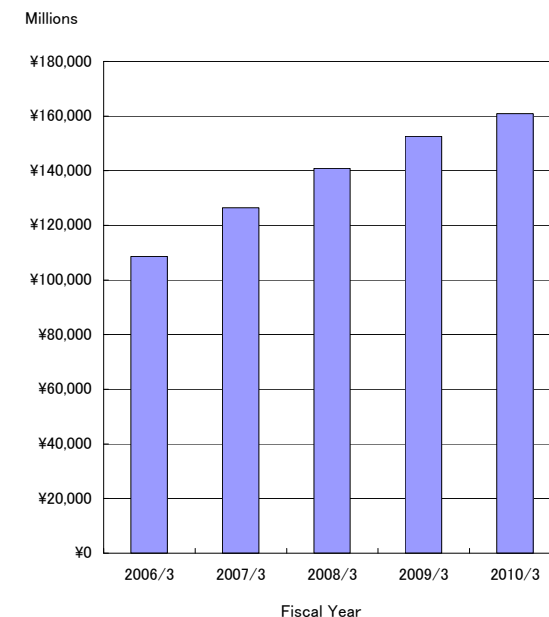
	2006/3	2007/3	2008/3	2009/3	2010/3
営業収益 Operating revenues	438,253	430,197	429,190	420,150	403,247
営業利益 Operating income	39,937	42,298	41,941	33,581	29,947
当期純利益 Net income	19,867	21,539	18,129	15,446	11,976

データ・ハイライト〔連結〕
Data highlights [Consolidated]

総資産と純資産
Total assets & Net assets



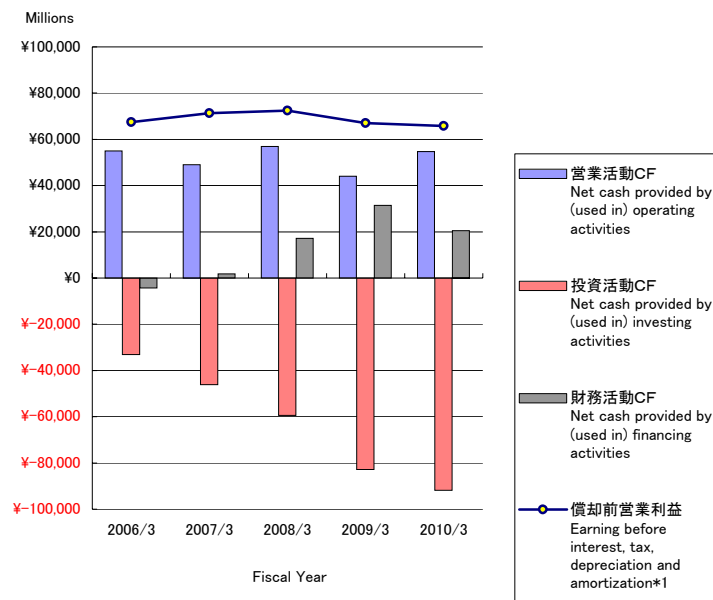
利益剰余金
Retained earnings



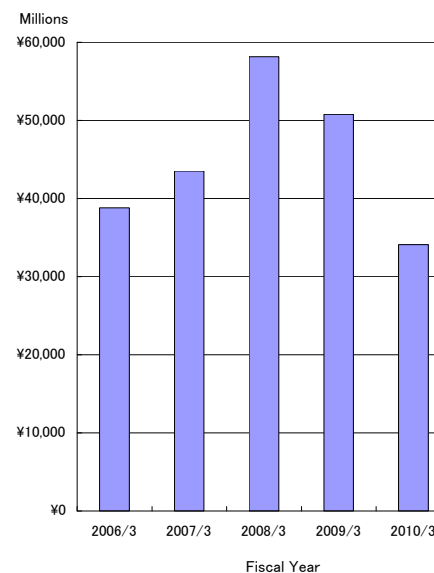
	(100万円 millions of yen)				
	2006/3	2007/3	2008/3	2009/3	2010/3
総資産 Total assets	630,700	648,161	660,161	692,091	731,728
純資産 Net assets	237,644	246,629	244,185	238,873	249,521
自己資本比率 Equity ratio	37.7%	38.1%	37.0%	34.5%	34.1%
利益剰余金 Retained earnings	108,651	126,389	140,812	152,572	160,882

データ・ハイライト〔連結〕
Data highlights〔Consolidated〕

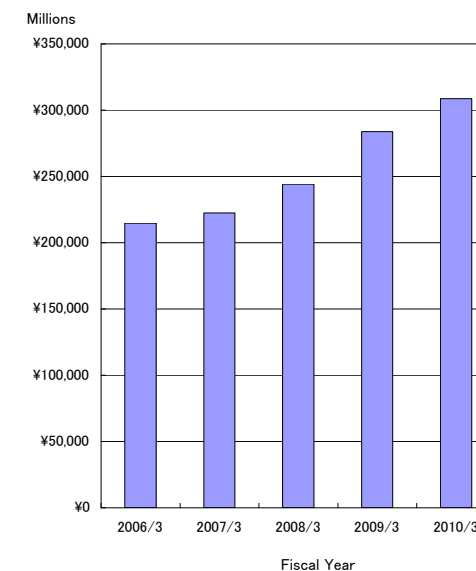
キャッシュ・フロー
Cash flows



現金及び現金同等物の期末残高
Cash and cash equivalents at end of period



有利子負債
Interest-bearing debt



	2006/3	2007/3	2008/3	2009/3	2010/3
営業活動CF Net cash provided by (used in) operating activities	54,944	49,086	56,881	43,986	54,663
投資活動CF Net cash provided by (used in) investing activities	△ 33,040	△ 46,110	△ 59,428	△ 82,844	△ 91,813
財務活動CF Net cash provided by (used in) financing activities	△ 4,299	1,733	17,194	31,474	20,448
償却前営業利益 Earning before interest, tax, depreciation and amortization*1	67,407	71,390	72,381	67,014	65,819
現金及び現金同等物の期末残高 Cash and cash equivalents at end of period	38,802	43,516	58,167	50,784	34,090
有利子負債 Interest-bearing debt*2	214,778	222,531	244,254	283,794	308,748

*1 償却前営業利益 = 営業利益 + 減価償却費

Earning before interest, tax, depreciation and amortization = Operating income + Depreciation and amortization

*2 有利子負債 = 借入金 + 社債 + 鉄道建設・運輸施設整備支援機構未払金

Interest-bearing debt = Borrowings + Bonds + Long-term accounts payable from other financial institutions

財務諸表〔連結〕 Financial statements [Consolidated]

連結貸借対照表 Consolidated balance sheets

	2006/3	2007/3	2008/3	2009/3	2010/3
	(100万円 millions of yen)				
資産の部 Assets					
流動資産 Current assets	99,659	106,687	118,358	110,681	92,251
現金及び預金 Cash and deposits	28,833	29,546	49,199	47,806	29,112
受取手形及び売掛金 Notes and accounts receivable-trade	27,630	34,251	31,990	30,927	31,839
短期貸付金 Short-term loans receivable	10,396	14,533	9,385	3,349	—
有価証券 Short-term investment securities	—	1	15	—	—
たな卸資産 Inventories	25,771	22,130	20,885	—	—
商品及び製品 Merchandise and finished goods	—	—	—	16,808	16,483
仕掛品 Work in process	—	—	—	2,974	1,928
原材料及び貯蔵品 Raw materials and supplies	—	—	—	1,095	1,394
繰延税金資産 Deferred tax assets	4,146	3,693	3,752	4,268	3,389
その他 Other	3,212	2,812	3,311	3,604	8,245
貸倒引当金 Allowance for doubtful accounts	△ 331	△ 281	△ 181	△ 155	△ 142
固定資産 Noncurrent assets	531,040	541,473	541,803	581,410	639,477
有形固定資産 Property, plant and equipment	411,727	430,482	464,024	518,695	562,414
建物及び構築物(純額) Buildings and structures, net	237,869	238,935	236,901	243,038	249,540
機械装置及び運搬具(純額) Machinery, equipment and vehicles, net	33,502	35,513	38,187	43,856	51,228
土地 Land	111,329	116,844	133,369	149,992	164,888
建設仮勘定 Construction in progress	20,401	28,822	44,623	70,154	87,264
その他(純額) Other, net	8,624	10,365	10,943	11,653	9,493
無形固定資産 Intangible assets	3,010	4,602	5,457	5,486	6,336
投資その他の資産 Investments and other assets	116,302	106,388	72,320	57,227	70,725
投資有価証券 Investment securities	99,341	85,449	53,771	31,726	48,950
長期貸付金 Long-term loans receivable	553	572	568	—	—
繰延税金資産 Deferred tax assets	7,860	7,444	7,972	14,960	13,721
その他 Other	8,640	13,076	10,335	10,991	8,453
貸倒引当金 Allowance for doubtful accounts	△ 93	△ 154	△ 326	△ 451	△ 400
資産合計 Total Assets	630,700	648,161	660,161	692,091	731,728

財務諸表〔連結〕 Financial statements [Consolidated]

連結貸借対照表 Consolidated balance sheets

	2006/3	2007/3	2008/3	2009/3	2010/3
	(100万円 millions of yen)				
負債の部 Liabilities					
流動負債 Current liabilities	158,124	172,156	179,443	167,850	171,976
支払手形及び買掛金 Notes and accounts payable-trade	22,613	23,559	20,517	20,287	17,361
短期借入金 Short-term loans payable	57,988	52,720	52,097	51,965	49,588
1年以内償還社債 Current portion of bonds	—	10,000	10,000	—	—
未払法人税等 Income taxes payable	10,164	8,090	11,110	3,246	5,041
前受金 Advances received	9,968	16,165	21,818	28,621	35,060
繰延税金負債 Deferred tax liabilities	—	—	—	72	74
賞与引当金 Provision for bonuses	2,627	2,572	2,423	2,352	2,090
役員賞与引当金 Provision for directors' bonuses	—	95	95	95	90
その他の引当金 Other provision	963	268	1,515	1,453	1,749
その他 Other	53,797	58,685	59,866	59,754	60,920
固定負債 Noncurrent liabilities	230,239	227,029	236,532	285,368	310,231
社債 Bonds payable	60,000	55,932	76,512	107,092	127,672
長期借入金 Long-term loans payable	91,072	98,836	104,027	123,491	130,501
長期未払金 Long-term accounts payable-other	5,775	5,094	1,647	—	—
繰延税金負債 Deferred tax liabilities	20,362	15,031	384	—	17
退職給付引当金 Provision for retirement benefits	25,270	24,788	24,843	24,814	23,963
役員退職慰労金引当金 Reserve for retirement benefits to directors & corporate auditors	727	—	—	—	—
その他 Other	27,030	27,344	29,116	29,970	28,076
特別法上の準備金 Reserve under special act	4,692	2,346	—	—	—
特定都市鉄道整備準備金 Special reserve for expansion of railway transport capacity	4,692	2,346	—	—	—
負債合計 Total liabilities	393,056	401,531	415,976	453,218	482,207
資本の部 Shareholders' equity					
資本金 Capital stock	59,023	—	—	—	—
資本剰余金 Capital surplus	42,017	—	—	—	—
利益剰余金 Retained earnings	108,651	—	—	—	—
その他有価証券評価差額金 Valuation difference on available-for-sale securities	43,155	—	—	—	—
自己株式 Treasury stock	△ 15,204	—	—	—	—
資本合計 Total shareholders' equity	237,644	—	—	—	—
負債及び資本合計 Total Liabilities and shareholders' equity	630,700	—	—	—	—
純資産の部 Net assets					
株主資本 Shareholders' equity	—	212,125	226,482	234,582	242,772
資本金 Capital stock	—	59,023	59,023	59,023	59,023
資本剰余金 Capital surplus	—	42,022	42,025	42,010	42,010
利益剰余金 Retained earnings	—	126,389	140,812	152,572	160,882
自己株式 Treasury stock	—	△ 15,310	△ 15,380	△ 19,024	△ 19,143
評価・換算差額等 Valuation and translation adjustments	—	34,504	17,703	4,290	6,748
その他有価証券評価差額金 Valuation difference on available-for-sale securities	—	34,504	17,703	4,290	6,748
純資産合計 Total net assets	—	246,629	244,185	238,873	249,521
負債純資産合計 Total liabilities and net assets	—	648,161	660,161	692,091	731,728

財務諸表〔連結〕

Financial statements [Consolidated]

連結損益計算書 Consolidated statements of income

	2006/3	2007/3	2008/3	2009/3	2010/3
	(100万円 millions of yen)				
営業損益 Operating income and expenses					
営業収益 Operating revenue	438,253	430,197	429,190	420,150	403,247
営業費 Operating expenses	398,316	387,899	387,248	386,569	373,299
運輸業等営業費及び売上原価 Operating expenses and cost of sales of transportation	349,669	340,239	339,426	338,688	326,042
販売費及び一般管理費 Selling, general and administrative expenses	48,647	47,659	47,822	47,880	47,257
営業利益 Operating income	39,937	42,298	41,941	33,581	29,947
営業外損益 Non operating income and expenses					
営業外収益 Non-operating income	2,351	2,291	2,464	2,557	2,118
受取利息及び受取配当金 Interest income and dividends income	746	1,019	1,128	1,015	642
匿名組合投資利益 Gain on investments in silent partnership	—	—	—	—	329
持分法による投資利益 Equity in earnings of affiliates	114	95	95	121	84
雑収入 Miscellaneous income	1,490	1,177	1,240	1,419	1,061
営業外費用 Non-operating expenses	5,920	7,794	5,533	5,878	5,801
支払利息 Interest expenses	4,918	5,397	4,896	5,116	5,374
雑支出 Miscellaneous expenses	1,002	2,396	636	761	426
経常利益 Ordinary income	36,368	36,795	38,872	30,260	26,264
特別損益 Extraordinary profit and loss					
特別利益 Extraordinary income	5,170	4,997	4,943	1,347	996
工事負担金等受入額 Contribution for construction	1,935	2,223	1,208	880	446
償却債権取立益 Gain on bad debts recovered	—	—	—	—	193
SFカード未使用分受入額 Gain on unused amounts of stored fare cards	—	—	—	—	129
固定資産売却益 Gain on sales of noncurrent assets	140	135	453	225	60
特定都市鉄道整備準備金取崩額 Reversal of special reserve for expansion of railway transport capacity	2,346	2,346	2,346	—	—
投資有価証券売却益 Gain on sales of investment securities	184	—	371	—	—
年金資産返還時数理差異償却額 Gain on actuarial assumptions in retirement benefits	—	—	367	—	—
その他 Other	563	292	196	241	166
特別損失 Extraordinary loss	8,005	5,090	12,576	4,353	5,328
固定資産除却損 Loss on retirement of noncurrent assets	1,649	1,228	1,245	1,172	2,139
退店補償金 Compensation for tenants closing	—	—	3,113	782	1,005
固定資産圧縮損 Loss on reduction of noncurrent assets	1,932	2,198	1,629	920	450
減損損失 Impairment loss	2,698	1,037	4,226	656	362
固定資産売却損 Loss on sales of noncurrent assets	—	134	58	65	139
投資有価証券評価損 Loss on revaluation of investments in securities	—	—	1,068	—	—
商品券等回収損失引当金繰入額 Provision of reserve for loss from redemption of gift vouchers for prior periods	—	—	355	—	—
特別退職金 Special retirement payments	881	123	—	—	—
固定資産臨時償却 Non-recurring depreciation	713	—	—	—	—
その他 Other	130	368	880	756	1,230
税金等調整前当期純利益 Income before income taxes and minority interests	33,532	36,702	31,239	27,254	21,932
法人税、住民税及び事業税 Income taxes-current	15,095	13,668	16,814	10,431	9,492
法人税等調整額 Income taxes-deferred	△ 1,429	1,494	△ 3,704	1,376	463
当期純利益 Net income	19,867	21,539	18,129	15,446	11,976

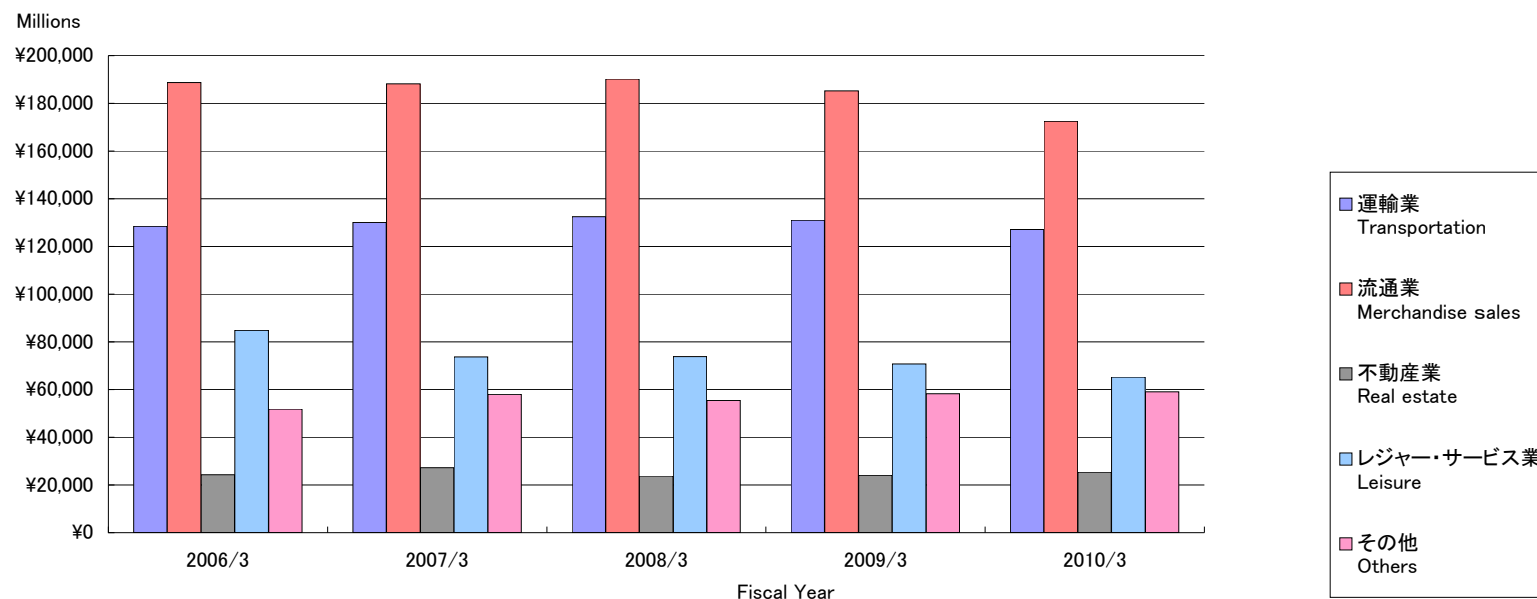
財務諸表〔連結〕 Financial statements [Consolidated]

連結キャッシュ・フロー計算書 Consolidated statements of cash flows

	(100万円 millions of yen)				
	2006/3	2007/3	2008/3	2009/3	2010/3
税金等調整前当期純利益 Income before income taxes and minority interests	33,532	36,702	31,239	27,254	21,932
減価償却費 Depreciation and amortization	28,183	29,091	31,084	33,432	35,871
減損損失 Impairment loss	2,698	1,037	4,226	656	362
退職給付引当金の増減額(△は減少) Increase (decrease) in provision for retirement benefits	△ 1,438	△ 481	55	△ 29	△ 851
前払年金費用の増減額(△は増加) Decrease (increase) in prepaid pension costs	—	△ 3,428	2,146	△ 611	2,371
特定都市鉄道整備準備金の増減額(△は減少) Increase (decrease) in special reserve for expansion of railway transport capacity	△ 2,346	△ 2,346	△ 2,346	—	—
たな卸資産評価損 Loss on valuation of inventories	—	—	—	42	1
販売用土地評価損 Loss on valuation of land for sale	178	40	16	1	12
投資有価証券評価損益(△は益) Loss (gain) on valuation of investment securities	16	19	1,068	163	33
固定資産除却損 Loss on retirement of noncurrent assets	2,618	2,114	2,482	2,262	2,052
固定資産圧縮損 Loss on reduction of noncurrent assets	1,586	2,198	1,629	920	450
受取利息及び受取配当金 Interest and dividends income	△ 746	△ 1,019	△ 1,128	△ 1,015	△ 642
支払利息 Interest expenses	4,918	5,397	4,896	5,116	5,374
社債償還損 Loss on redemption of bonds	—	1,623	—	—	—
投資有価証券売却損益(△は益) Loss (gain) on sales of investment securities	△ 184	—	△ 371	—	△ 72
工事負担金等受入額 Proceeds from contribution for construction	△ 1,935	△ 2,223	△ 1,208	△ 880	△ 446
退店補償金 Compensation for tenants closing	—	—	3,113	782	1,005
営業債権の増減額(△は増加) Decrease (increase) in operating receivables	△ 1,391	△ 6,619	2,238	356	△ 1,646
たな卸資産の増減額(△は増加) Decrease (increase) in inventories	2,259	3,622	888	△ 138	2,583
営業債務の増減額(△は減少) Increase (decrease) in operating debt	2,239	1,904	△ 4,422	△ 559	54
その他 Other, net	984	1,408	46	△ 1,418	△ 162
小計 Subtotal	71,174	69,044	75,653	66,334	68,284
利息及び配当金の受取額 Interest and dividends income received	749	1,022	1,133	1,020	645
利息の支払額 Interest expenses paid	△ 4,904	△ 5,098	△ 4,226	△ 4,495	△ 4,740
退店補償金の支払額 Compensation paid for tenants closing	—	—	△ 2,000	△ 603	△ 1,630
法人税等の支払額 Income taxes paid	△ 12,075	△ 15,882	△ 13,679	△ 18,269	△ 7,895
営業活動によるキャッシュ・フロー Net cash provided by (used in) operating activities	54,944	49,086	56,881	43,986	54,663
有形固定資産の取得による支出 Purchase of property, plant and equipment	△ 34,975	△ 49,815	△ 67,274	△ 88,669	△ 85,173
工事負担金等受入による収入 Proceeds from contribution received for construction	2,897	6,399	7,119	7,122	8,466
投資有価証券の取得による支出 Purchase of investment securities	△ 1,781	△ 711	△ 703	△ 628	△ 13,297
投資有価証券の売却及び償還による収入 Proceeds from sales and redemption of investment securities	303	87	3,434	22	325
その他 Other, net	515	△ 2,070	△ 2,003	△ 690	△ 2,134
投資活動によるキャッシュ・フロー Net cash provided by (used in) investing activities	△ 33,040	△ 46,110	△ 59,428	△ 82,844	△ 91,813
短期借入金の純増減額(△は減少) Net increase (decrease) in short-term loans payable	1,420	859	△ 810	810	249
長期借入れによる収入 Proceeds from long-term loans payable	13,070	19,950	17,500	30,830	15,750
長期借入金の返済による支出 Repayment of long-term loans payable	△ 12,292	△ 18,313	△ 12,121	△ 12,308	△ 11,366
社債の発行による収入 Proceeds from issuance of bonds	—	25,352	29,844	29,878	19,908
社債の償還による支出 Redemption of bonds	—	△ 21,623	△ 10,000	△ 10,000	—
長期未払金の返済による支出 Payments for long-term accounts payable-other	△ 839	△ 680	△ 3,447	—	—
自己株式の取得による支出 Purchase of treasury stock	△ 1,963	△ 117	△ 91	△ 3,819	△ 142
配当金の支払額 Cash dividends paid	△ 3,722	△ 3,706	△ 3,705	△ 3,683	△ 3,660
その他 Other, net	29	12	25	△ 232	△ 290
財務活動によるキャッシュ・フロー Net cash provided by (used in) financing activities	△ 4,299	1,733	17,194	31,474	20,448
現金及び現金同等物に係る換算差額 Effect of exchange rate change on cash and cash equivalents	5	4	3	1	6
現金及び現金同等物の増減額(△は減少) Net increase (decrease) in cash and cash equivalents	17,609	4,713	14,650	△ 7,382	△ 16,694
現金及び現金同等物の期首残高 Cash and cash equivalents at beginning of period	21,192	38,802	43,516	58,167	50,784
現金及び現金同等物の期末残高 Cash and cash equivalents at end of period	38,802	43,516	58,167	50,784	34,090

セグメント情報
Segment information

営業収益 Operating revenue



(100万円 millions of yen)

	2006/3	2007/3	2008/3	2009/3	2010/3
運輸業 Transportation	128,519	130,097	132,453	130,956	127,099
流通業 Merchandise sales	188,697	188,240	190,141	185,237	172,455
不動産業 Real estate	24,322	27,201	23,745	23,964	25,330
レジャー・サービス業 Leisure	84,775	73,718	73,835	70,684	65,200
その他 Others	51,777	57,933	55,451	58,305	59,100
合計 Total	478,092	477,191	475,627	469,148	449,187
消去 Elimination	(39,839)	(46,994)	(46,437)	(48,997)	(45,940)
連結 Consolidated	438,253	430,197	429,190	420,150	403,247

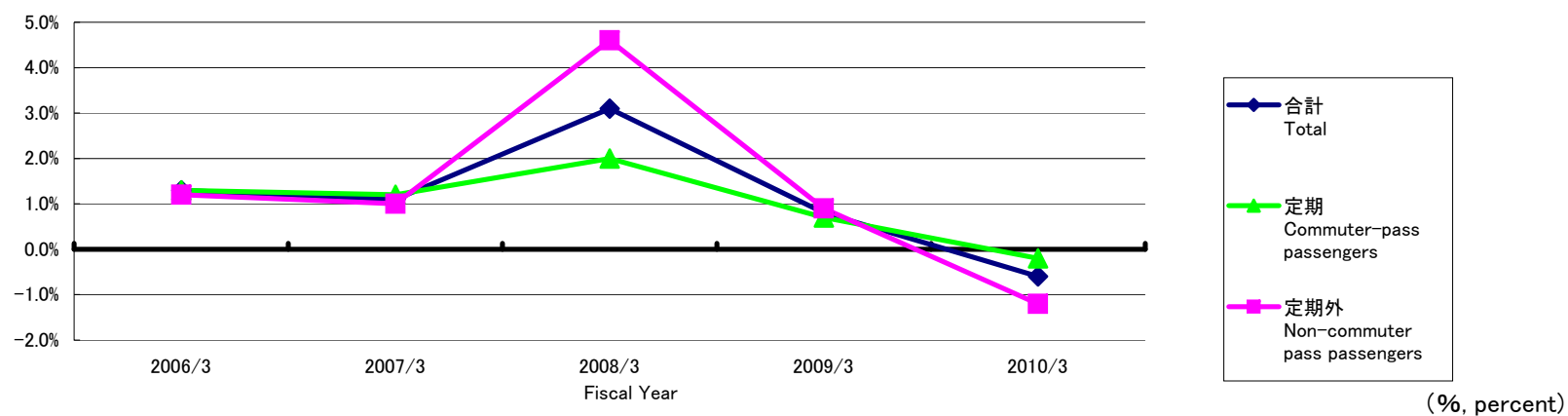
セグメント情報 Segment information

営業収益の明細 Operating revenue transaction

(100万円 millions of yen)

	2006/3	2007/3	2008/3	2009/3	2010/3
運輸業 Transportation					
鉄道事業 Railways	80,421	81,238	82,902	82,680	81,500
バス事業 Bus services	27,840	28,141	28,610	28,844	28,104
タクシー業 Taxi services	14,344	14,604	14,665	13,749	12,306
その他 Others	3,164	3,101	3,156	2,554	2,226
セグメント間取引 Intersegment	2,748	3,011	3,118	3,129	2,962
合計 Total	128,519	130,097	132,453	130,956	127,099

鉄道輸送人員の対前年増減率 Variation ratio against previous year of passengers transported (Railways)



	2006/3	2007/3	2008/3	2009/3	2010/3
定期 Commuter-pass passengers	1.3	1.2	2.0	0.7	△ 0.2
定期外 Non-commuter pass passengers	1.2	1.0	4.6	0.9	△ 1.2
合計 Total	1.3	1.1	3.1	0.8	△ 0.6

セグメント情報

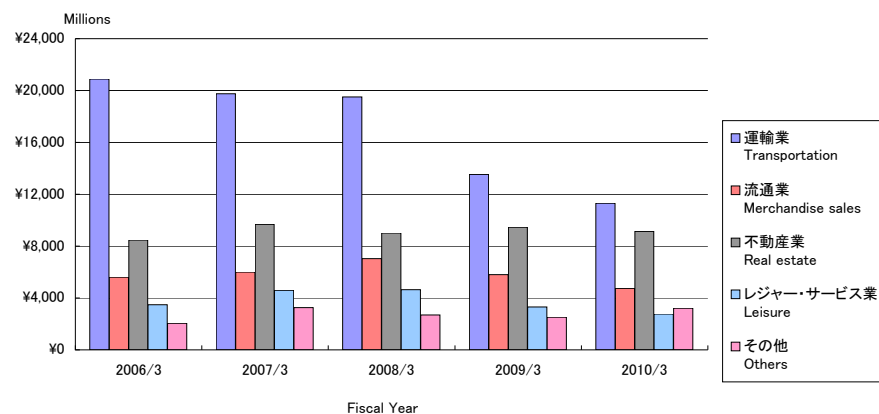
Segment information

営業収益の明細 Operating revenue transaction	(100万円 millions of yen)				
	2006/3	2007/3	2008/3	2009/3	2010/3
流通業 Merchandise sales					
百貨店業 Department stores	113,611	111,628	110,620	104,939	96,444
ストア業 Retail stores	38,779	39,761	40,865	41,317	38,306
書籍販売業 Retail stores for books	10,456	11,191	11,816	12,439	11,746
駅売店業 Retail stores at stations	10,120	9,657	9,733	9,753	9,463
その他 Others	13,098	13,472	14,402	14,523	14,484
セグメント間取引 Intersegment	2,630	2,528	2,703	2,263	2,010
合計 Total	188,697	188,240	190,141	185,237	172,455
不動産業 Real estate					
不動産賃貸業 Land and building leasing	14,918	15,455	16,850	17,119	18,048
不動産販売業 Development for selling by lots	6,186	8,485	3,303	3,151	3,823
その他 Others	1,295	1,294	1,508	1,383	1,161
セグメント間取引 Intersegment	1,922	1,965	2,082	2,310	2,296
合計 Total	24,322	27,201	23,745	23,964	25,330
レジャー・サービス業 Leisure					
ホテル業 Hotels	35,930	37,163	37,292	35,459	34,156
旅行業 Travel services	31,693	18,706	18,641	18,058	16,021
広告代理業 Advertising services	5,715	5,875	5,805	5,270	4,479
その他 Others	6,501	6,349	6,676	6,586	6,156
セグメント間取引 Intersegment	4,934	5,622	5,420	5,309	4,386
合計 Total	84,775	73,718	73,835	70,684	65,200
その他 Others					
ビル総合管理業 Building maintenance	7,093	8,666	8,775	9,156	9,069
車両整備業 Railway car maintenance	6,607	6,453	5,761	5,901	6,631
建築・土木業 Construction	9,745	8,171	7,015	6,287	8,126
その他 Others	729	776	787	976	989
セグメント間取引 Intersegment	27,602	33,865	33,112	35,984	34,283
合計 Total	51,777	57,933	55,451	58,305	59,100

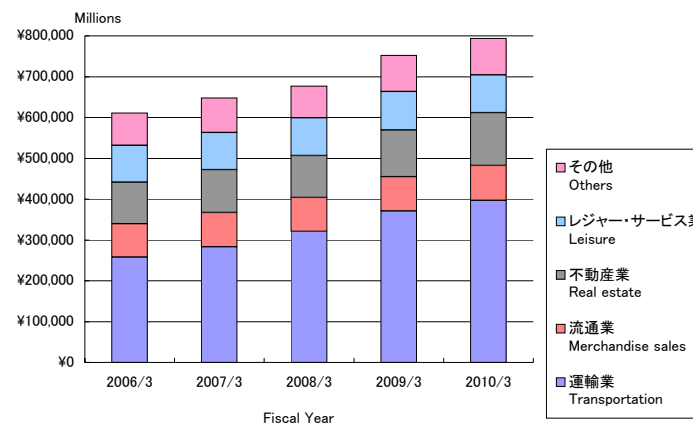
セグメント情報

Segment information

営業利益 Operating income



総資産 Total Assets



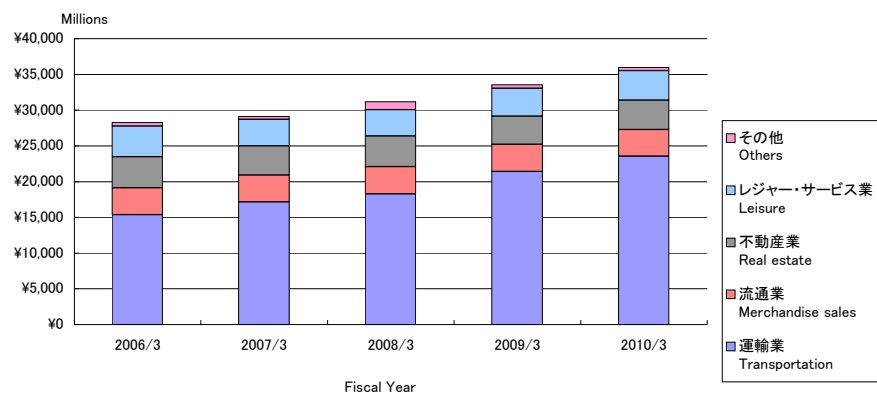
(100万円 millions of yen)

営業利益 Operating income	2006/3	2007/3	2008/3	2009/3	2010/3
運輸業 Transportation	20,896	19,760	19,513	13,528	11,297
流通業 Merchandise sales	5,614	6,007	7,044	5,803	4,736
不動産業 Real estate	8,473	9,690	9,013	9,447	9,136
レジャー・サービス業 Leisure	3,481	4,595	4,650	3,310	2,777
その他 Others	2,045	3,257	2,691	2,514	3,198
合計 Total	40,512	43,312	42,913	34,604	31,147
消去 Elimination	(574)	(1,013)	(972)	(1,023)	(1,199)
連結 Consolidated	39,937	42,298	41,941	33,581	29,947

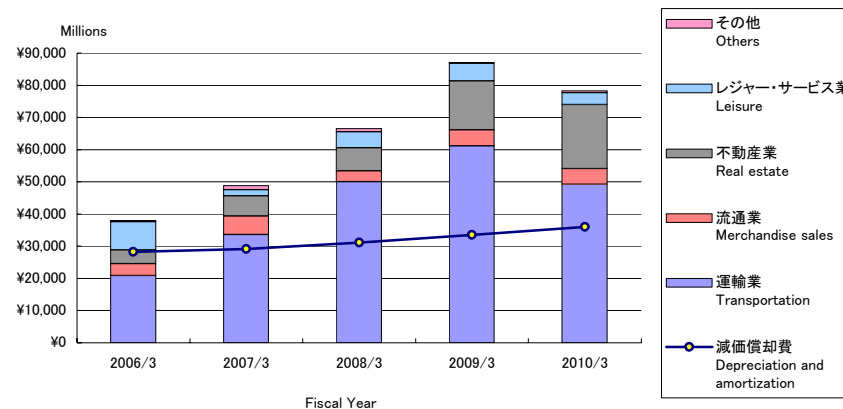
総資産 Total Assets	2006/3	2007/3	2008/3	2009/3	2010/3
運輸業 Transportation	257,984	283,292	320,682	370,646	396,713
流通業 Merchandise sales	81,545	83,820	83,592	84,442	85,605
不動産業 Real estate	101,894	105,169	102,242	114,158	129,337
レジャー・サービス業 Leisure	90,111	90,520	92,698	94,236	92,483
その他 Others	79,130	84,889	77,297	88,763	89,902
合計 Total	610,666	647,692	676,513	752,247	794,042
消去 Elimination	(20,034)	(468)	(16,351)	(60,155)	(62,313)
連結 Consolidated	630,700	648,161	660,161	692,091	731,728

セグメント情報
Segment information

減価償却費 Depreciation and amortization



減価償却費と設備投資 Depreciation and amortization & Capital expenditures



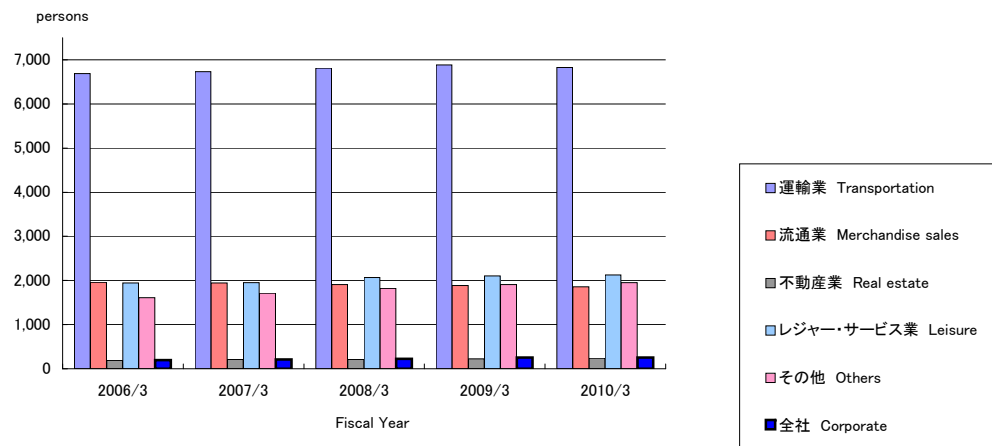
(100万円 millions of yen)

減価償却費 Depreciation and amortization	2006/3	2007/3	2008/3	2009/3	2010/3
運輸業 Transportation	15,356	17,154	18,272	21,414	23,543
流通業 Merchandise sales	3,768	3,750	3,798	3,817	3,723
不動産業 Real estate	4,334	4,102	4,293	3,945	4,140
レジャー・サービス業 Leisure	4,323	3,719	3,682	3,875	4,126
その他 Others	461	381	1,114	478	459
合計 Total	28,244	29,108	31,161	33,530	35,993
消去 Elimination	(61)	(16)	(77)	(97)	(122)
連結 Consolidated	28,183	29,091	31,084	33,432	35,871

設備投資 Capital expenditures	2006/3	2007/3	2008/3	2009/3	2010/3
運輸業 Transportation	20,905	33,662	50,020	61,180	49,219
流通業 Merchandise sales	3,702	5,759	3,402	4,946	4,874
不動産業 Real estate	4,251	6,213	7,133	15,212	19,936
レジャー・サービス業 Leisure	8,719	1,898	4,969	5,460	3,612
その他 Others	378	1,342	1,031	184	642
合計 Total	37,957	48,877	66,556	86,984	78,285
消去 Elimination	(103)	(848)	(821)	(988)	(660)
連結 Consolidated	37,854	48,028	65,735	85,996	77,624

セグメント情報 Segment information

従業員数 Numbers of employee



(人 persons)

従業員数 Numbers of employee	2006/3	2007/3	2008/3	2009/3	2010/3
運輸業 Transportation	6,686	6,731	6,812	6,882	6,827
流通業 Merchandise sales	1,962	1,944	1,909	1,884	1,859
不動産業 Real estate	192	207	211	222	237
レジャー・サービス業 Leisure	1,942	1,954	2,064	2,100	2,127
その他 Others	1,609	1,709	1,820	1,905	1,948
全社 Corporate	195	210	225	251	252
連結 Consolidated	12,586	12,755	13,041	13,244	13,250