



*Keio Corporation*

# ***FACT BOOK 2011-2Q***

*Last five-year Summary(Consolidated)*

(連絡先)

contact address

京王電鉄株式会社 総合企画本部 経理部  
Keio Corporation

齋藤

Saito

PHONE : 042-337-3135

F A X : 042-374-9810

# Contents

## Data highlights [Consolidated]

営業収益 Operating revenues	1
営業利益 Operating income	1
経常利益 Ordinary income	1
当期(四半期)純利益 Net income	1
総資産と純資産 Total assets & Net assets	2
利益剰余金 Retained earnings	2
有利子負債 Interest-bearing debt	2
キャッシュ・フロー Cash flows	3
現金及び現金同等物の期末残高 Cash and cash equivalents at end of period	3

## Financial statements [Consolidated]

連結貸借対照表 Consolidated balance sheets	4
連結損益計算書 Consolidated statements of income	6
連結キャッシュ・フロー計算書 Consolidated statements of cash flows	7

## Segment information

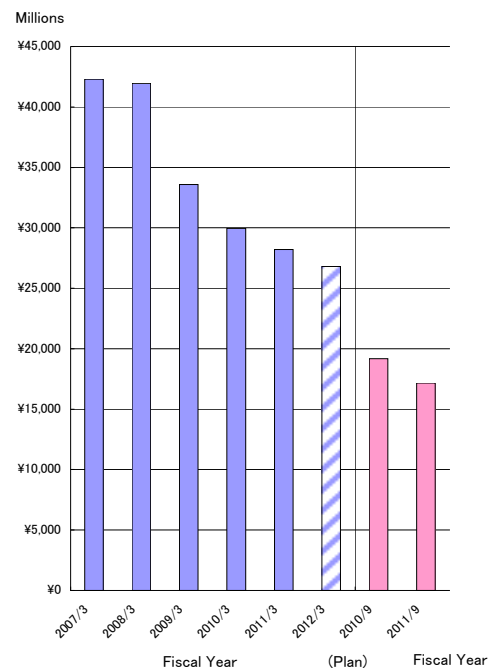
営業収益 Operating revenues	8
営業収益の明細 Operating revenues transaction	9
・運輸業 Transportation … 9	
・流通業 Merchandise sales … 9	
・不動産業 Real estate … 9	
・レジャー・サービス業 Leisure … 9	
・その他業 Other businesses … 9	
・鉄道輸送人員…10	
Passengers transported (Railways)	
・鉄道輸送人員の対前年増減率 …10	
Variation ratio against previous year of passengers transported (Railways)	
・旅客運輸収入…11	
Passenger revenues(Railways)	
・旅客運輸収入の対前年増減率 …11	
Variation ratio against previous year of Passenger revenues(Railways)	
営業利益 Operating income	12
総資産 Total assets	12
減価償却費 Depreciation and amortization	13
減価償却費と設備投資 Depreciation and amortization & Capital expenditures	13

データ・ハイライト〔連結〕  
Data highlights [Consolidated]

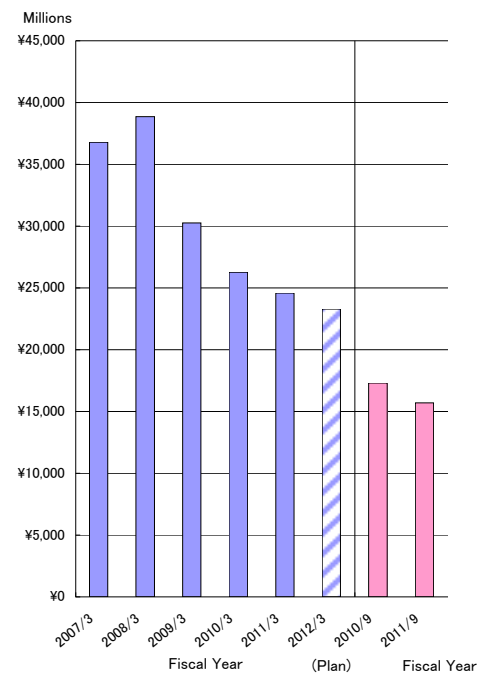
営業収益  
Operating revenues



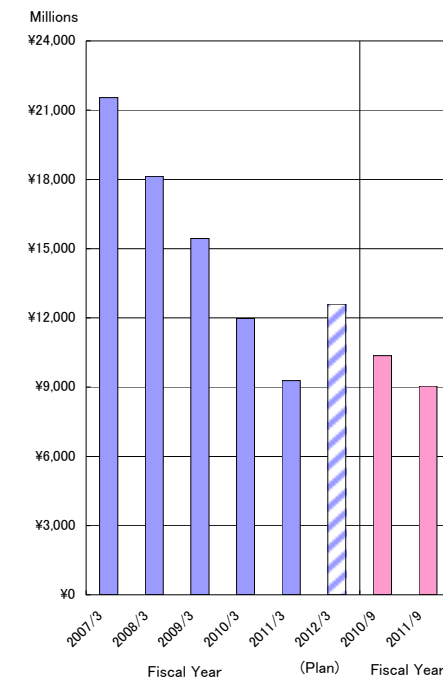
営業利益  
Operating income



経常利益  
Ordinary income



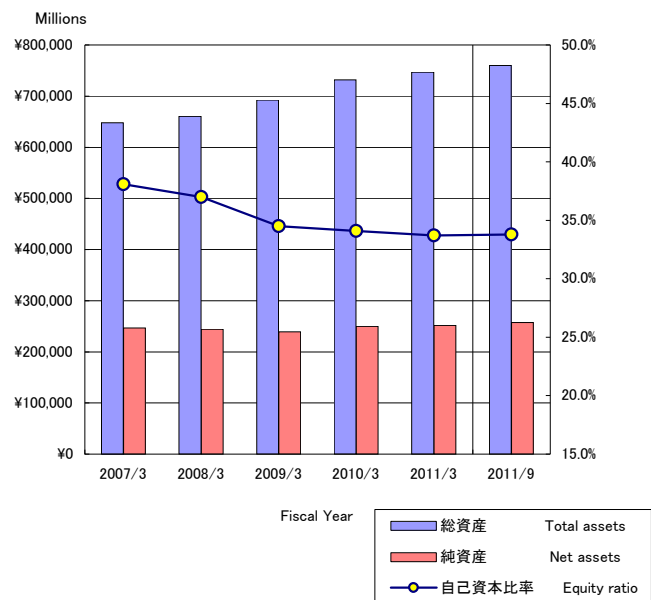
当期(四半期)純利益  
Net income



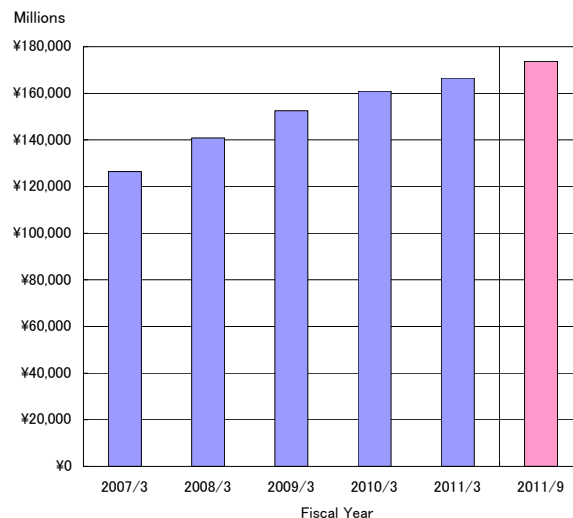
	2007/3	2008/3	2009/3	2010/3	2011/3	2012/3 (Plan)	2010/9	2011/9
営業収益 Operating revenues	430,197	429,190	420,150	403,247	391,172	387.6	195,722	189,091
営業利益 Operating income	42,298	41,941	33,581	29,947	28,221	26.8	19,167	17,164
経常利益 Ordinary income	36,795	38,872	30,260	26,264	24,576	23.3	17,309	15,698
当期(四半期)純利益 Net income	21,539	18,129	15,446	11,976	9,276	12.6	10,358	9,052

データ・ハイライト〔連結〕  
Data highlights [Consolidated]

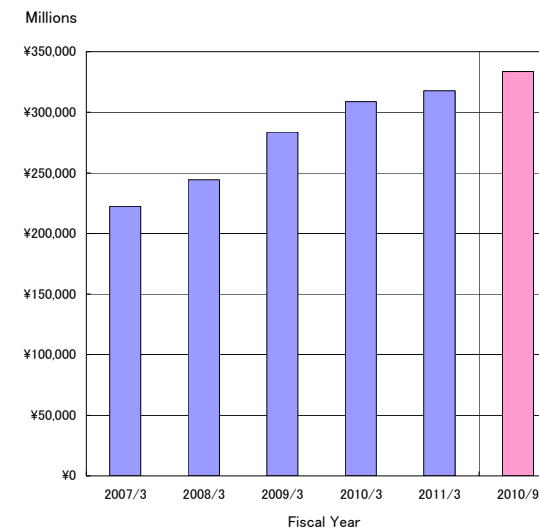
総資産と純資産  
Total assets & Net assets



利益剰余金  
Retained earnings



有利子負債  
Interest-bearing debt



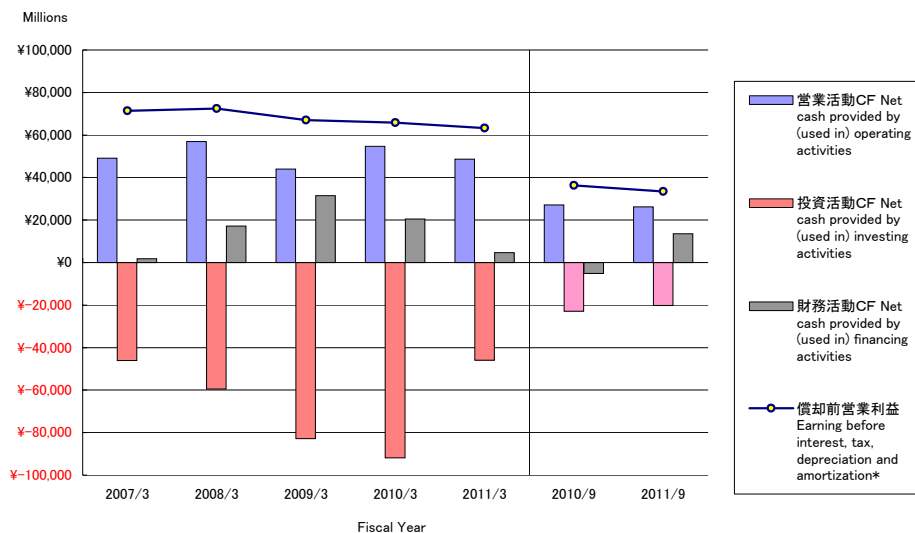
	2007/3	2008/3	2009/3	2010/3	2011/3	2011/9 (100万円/¥-mil.)
総資産 Total assets	648,161	660,161	692,091	731,728	746,979	760,136
純資産 Net assets	246,629	244,185	238,873	249,521	251,405	257,077
自己資本比率 Equity ratio	38.1%	37.0%	34.5%	34.1%	33.7%	33.8%
利益剰余金 Retained earnings	126,389	140,812	152,572	160,882	166,492	173,711
有利子負債 Interest-bearing debt*	222,531	244,254	283,794	308,748	317,762	333,545
借入金 loans payable	151,556	156,125	175,456	180,090	188,750	184,360
社債 Bonds payable	65,932	86,512	107,092	127,672	128,251	148,541
鉄道・運輸機構未払金 Long-term accounts payable from other financial institutions	5,042	1,616	1,245	986	759	642

\* 有利子負債 = 借入金 + 社債 + 鉄道建設・運輸施設整備支援機構未払金

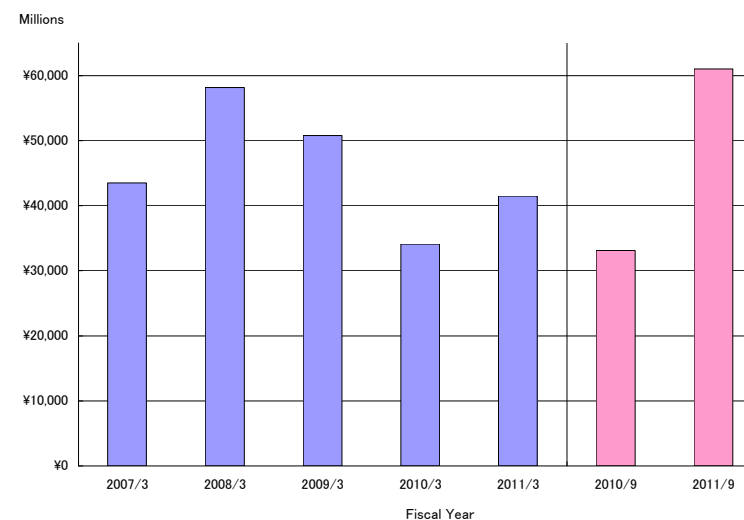
Interest-bearing debt = Borrowings + Bonds + Long-term accounts payable from other financial institutions

データ・ハイライト〔連結〕  
Data highlights [Consolidated]

キャッシュ・フロー  
Cash flows



現金及び現金同等物の期末残高  
Cash and cash equivalents at end of period



	2007/3	2008/3	2009/3	2010/3	2011/3	2010/9	2011/9
営業活動CF Net cash provided by (used in) operating activities	49,086	56,881	43,986	54,663	48,630	27,072	26,263
投資活動CF Net cash provided by (used in) investing activities	△ 46,110	△ 59,428	△ 82,844	△ 91,813	△ 45,940	△ 22,914	△ 20,199
財務活動CF Net cash provided by (used in) financing activities	1,733	17,194	31,474	20,448	4,673	△ 5,160	13,501
償却前営業利益 Earning before interest, tax, depreciation and amortization*	71,390	72,381	67,014	65,819	63,257	36,221	33,454
現金及び現金同等物の期末残高 Cash and cash equivalents at end of period	43,516	58,167	50,784	34,090	41,461	33,093	61,028

\* 償却前営業利益 = 営業利益 + 減価償却費

Earning before interest, tax, depreciation and amortization = Operating income + Depreciation and amortization

## 財務諸表〔連結〕 Financial statements [Consolidated]

### 連結貸借対照表 Consolidated balance sheets

	2007/3	2008/3	2009/3	2010/3	2011/3	(100万円/¥-mil.) 2011/9
<b>資産の部 Assets</b>						
<b>流動資産 Current assets</b>	106,687	118,358	110,681	92,251	95,534	<b>114,600</b>
現金及び預金 Cash and deposits	29,546	49,199	47,806	29,112	41,482	<b>48,549</b>
受取手形及び売掛金 Notes and accounts receivable-trade	34,251	31,990	30,927	31,839	27,635	<b>25,611</b>
短期貸付金 Short-term loans receivable	14,533	9,385	3,349	—	—	<b>—</b>
有価証券 Short-term investment securities	1	15	—	—	—	<b>12,530</b>
たな卸資産 Inventories	22,130	20,885	—	—	—	<b>—</b>
商品及び製品 Merchandise and finished goods	—	—	16,808	16,483	15,690	<b>15,363</b>
仕掛品 Work in process	—	—	2,974	1,928	682	<b>1,265</b>
原材料及び貯蔵品 Raw materials and supplies	—	—	1,095	1,394	1,438	<b>1,557</b>
繰延税金資産 Deferred tax assets	3,693	3,752	4,268	3,389	2,990	<b>—</b>
その他 Other	2,812	3,311	3,604	8,245	5,739	<b>9,851</b>
貸倒引当金 Allowance for doubtful accounts	△ 281	△ 181	△ 155	△ 142	△ 124	<b>△ 127</b>
<b>固定資産 Noncurrent assets</b>	541,473	541,803	581,410	639,477	651,445	<b>645,536</b>
<b>有形固定資産 Property, plant and equipment</b>	430,482	464,024	518,695	562,414	580,318	<b>576,538</b>
建物及び構築物(純額) Buildings and structures, net	238,935	236,901	243,038	249,540	246,600	<b>247,461</b>
機械装置及び運搬具(純額) Machinery, equipment and vehicles, net	35,513	38,187	43,856	51,228	45,569	<b>—</b>
土地 Land	116,844	133,369	149,992	164,888	166,729	<b>167,411</b>
建設仮勘定 Construction in progress	28,822	44,623	70,154	87,264	113,156	<b>110,953</b>
その他(純額) Other, net	10,365	10,943	11,653	9,493	8,263	<b>50,712</b>
<b>無形固定資産 Intangible assets</b>	4,602	5,457	5,486	6,336	6,781	<b>6,192</b>
<b>投資その他の資産 Investments and other assets</b>	106,388	72,320	57,227	70,725	64,344	<b>62,805</b>
投資有価証券 Investment securities	85,449	53,771	31,726	48,950	42,630	<b>40,353</b>
長期貸付金 Long-term loans receivable	572	568	—	—	—	<b>—</b>
繰延税金資産 Deferred tax assets	7,444	7,972	14,960	13,721	13,967	<b>—</b>
その他 Other	13,076	10,335	10,991	8,453	8,088	<b>22,792</b>
貸倒引当金 Allowance for doubtful accounts	△ 154	△ 326	△ 451	△ 400	△ 341	<b>△ 340</b>
<b>資産合計 Total Assets</b>	<b>648,161</b>	<b>660,161</b>	<b>692,091</b>	<b>731,728</b>	<b>746,979</b>	<b>760,136</b>
<b>《参考》 Reference</b>	2007/3	2008/3	2009/3	2010/3	2011/3	2011/9
<b>有形固定資産の増減内訳 Increase(decrease) in property, plant and equipment</b>						
取得 Acquired	52,787	70,667	90,596	82,542	55,275	<b>12,091</b>
償却 Amortization	△ 28,243	△ 29,807	△ 31,733	△ 34,219	△ 33,571	<b>△ 15,439</b>
除却 Retirement	△ 2,098	△ 2,446	△ 2,175	△ 1,887	△ 1,714	<b>△ 158</b>
その他 Other	△ 3,691	△ 4,870	△ 2,016	△ 2,717	△ 2,085	<b>△ 273</b>
計 Total	18,754	33,542	54,670	43,719	17,903	<b>△ 3,779</b>
<b>投資有価証券の評価差額の増減 Increase(decrease) in valuation difference on investment securities</b>						
投資有価証券の評価差額の増減 Increase(decrease) in valuation difference on investment securities	△ 14,607	△ 28,331	△ 22,603	4,131	△ 6,236	<b>△ 2,596</b>

## 財務諸表〔連結〕 Financial statements [Consolidated]

### 連結貸借対照表 Consolidated balance sheets

(100万円/¥-mil.)

	2007/3	2008/3	2009/3	2010/3	2011/3	2011/9
<b>負債の部 Liabilities</b>						
流動負債 Current liabilities	172,156	179,443	167,850	171,976	177,948	170,609
支払手形及び買掛金 Notes and accounts payable-trade	23,559	20,517	20,287	17,361	16,011	12,758
短期借入金 Short-term loans payable	52,720	52,097	51,965	49,588	51,807	52,233
1年以内償還社債 Current portion of bonds	10,000	10,000	—	—	—	—
未払法人税等 Income taxes payable	8,090	11,110	3,246	5,041	4,864	7,287
前受金 Advances received	16,165	21,818	28,621	35,060	43,606	—
繰延税金負債 Deferred tax liabilities	—	—	72	74	—	—
賞与引当金 Provision for bonuses	2,572	2,423	2,352	2,090	2,189	—
役員賞与引当金 Provision for directors' bonuses	95	95	95	90	—	—
その他の引当金 Other provision	268	1,515	1,453	1,749	1,863	—
引当金 Provision	—	—	—	—	—	7,577
その他 Other	58,685	59,866	59,754	60,920	57,606	90,751
固定負債 Noncurrent liabilities	227,029	236,532	285,368	310,231	317,625	332,449
社債 Bonds payable	55,932	76,512	107,092	127,672	128,251	148,541
長期借入金 Long-term loans payable	98,836	104,027	123,491	130,501	136,943	132,126
長期未払金 Long-term accounts payable-other	5,094	1,647	—	—	—	—
繰延税金負債 Deferred tax liabilities	15,031	384	—	17	49	—
退職給付引当金 Provision for retirement benefits	24,788	24,843	24,814	23,963	22,557	21,829
その他 Other	27,344	29,116	29,970	28,076	29,823	29,951
特別法上の準備金 Reserve under the special law	2,346	—	—	—	—	—
特定都市鉄道整備準備金 Special reserve for expansion of railway transport capacity	2,346	—	—	—	—	—
負債合計 Total liabilities	401,531	415,976	453,218	482,207	495,574	503,058
<b>純資産の部 Net assets</b>						
株主資本 Shareholders' equity	212,125	226,482	234,582	242,772	248,360	255,576
資本金 Capital stock	59,023	59,023	59,023	59,023	59,023	59,023
資本剰余金 Capital surplus	42,022	42,025	42,010	42,010	42,009	42,008
利益剰余金 Retained earnings	126,389	140,812	152,572	160,882	166,492	173,711
自己株式 Treasury stock	△ 15,310	△ 15,380	△ 19,024	△ 19,143	△ 19,165	△ 19,167
その他の包括利益累計額 Accumulated other comprehensive income	34,504	17,703	4,290	6,748	3,044	1,501
その他有価証券評価差額金 Valuation difference on available-for-sale securities	34,504	17,703	4,290	6,748	3,044	1,501
純資産合計 Total net assets	246,629	244,185	238,873	249,521	251,405	257,077
負債純資産合計 Total liabilities and net assets	648,161	660,161	692,091	731,728	746,979	760,136

## 財務諸表〔連結〕

### Financial statements [Consolidated]

#### 連結損益計算書 Consolidated statements of income

	2007/3	2008/3	2009/3	2010/3	2011/3	(100万円/¥-mil.) 2010/9	2011/9
<b>営業損益 Operating income and expenses</b>							
営業収益 Operating revenues	430,197	429,190	420,150	403,247	391,172	195,722	189,091
営業費 Operating expenses	387,899	387,248	386,569	373,299	362,950	176,554	171,926
運輸等営業費及び売上原価 Operating expenses and cost of sales of transportation	340,239	339,426	338,688	326,042	317,143	153,867	149,791
販売費及び一般管理費 Selling, general and administrative expenses	47,659	47,822	47,880	47,257	45,807	22,687	22,135
営業利益 Operating income	42,298	41,941	33,581	29,947	28,221	19,167	17,164
<b>営業外損益 Non operating income and expenses</b>							
営業外収益 Non-operating income	2,291	2,464	2,557	2,118	2,501	1,226	1,576
受取利息及び受取配当金 Interest income and dividends income	1,019	1,128	1,015	642	910	534	533
受取保険金 Insurance Income	—	—	—	—	—	—	317
匿名組合投資利益 Gain on investments in silent partnership	—	—	—	329	579	284	245
持分法による投資利益 Equity in earnings of affiliates	95	95	121	84	49	90	48
雑収入 Miscellaneous income	1,177	1,240	1,419	1,061	962	317	431
営業外費用 Non-operating expenses	7,794	5,533	5,878	5,801	6,146	3,084	3,042
支払利息 Interest expenses	5,397	4,896	5,116	5,374	5,521	2,772	2,795
雑支出 Miscellaneous expenses	2,396	636	761	426	625	312	246
経常利益 Ordinary income	36,795	38,872	30,260	26,264	24,576	17,309	15,698
<b>特別損益 Extraordinary income and loss</b>							
特別利益 Extraordinary income	4,997	4,943	1,347	996	2,961	747	529
工事負担金等受入額 Contribution for construction	2,223	1,208	880	446	1,071	44	254
受取補償金 Compensation Income	—	—	—	—	—	—	229
固定資産売却益 Gain on sales of noncurrent assets	135	453	225	60	514	492	29
SFカード未使用分受入額 Gain on unused amounts of stored fare cards	—	—	—	129	684	—	—
償却債権取立益 Gain on bad debts recovered	—	—	—	193	—	—	—
特定都市鉄道整備準備金取崩額 Reversal of special reserve for expansion of railway transport capacity	2,346	2,346	—	—	—	—	—
投資有価証券売却益 Gain on sales of investment securities	—	371	—	—	—	—	—
年金資産返還時数理差異償却額 Gain on actuarial assumptions in retirement benefits	—	367	—	—	—	—	—
その他 Other	292	196	241	166	692	209	15
特別損失 Extraordinary loss	5,090	12,576	4,353	5,328	6,669	979	370
固定資産圧縮損 Loss on reduction of noncurrent assets	2,198	1,629	920	450	1,073	44	254
固定資産除却損 Loss on retirement of noncurrent assets	1,228	1,245	1,172	2,139	3,246	204	88
退店補償金 Compensation for tenants closing	—	3,113	782	1,005	348	270	20
減損損失 Impairment loss	1,037	4,226	656	362	1,359	—	—
固定資産売却損 Loss on sales of noncurrent assets	134	58	65	139	21	—	—
投資有価証券評価損 Loss on valuation of investments in securities	—	1,068	—	—	—	—	—
商品券等回収損失引当金繰入額 Provision of reserve for loss from redemption of gift vouchers for prior periods	—	355	—	—	—	—	—
特別退職金 Special retirement payments	123	—	—	—	—	—	—
資産除去債務会計基準の適用に伴う影響額 Loss on adjustment for changes of accounting standard for asset retirement obligations	—	—	—	—	—	395	—
その他 Other	368	880	756	1,230	619	64	6
税金等調整前当期(四半期)純利益 Income before income taxes and minority interests	36,702	31,239	27,254	21,932	20,869	17,077	15,857
法人税等 Income taxes	—	—	—	—	—	6,718	6,804
法人税、住民税及び事業税 Income taxes-current	13,668	16,814	10,431	9,492	8,949	—	—
法人税等調整額 Income taxes-deferred	1,494	△ 3,704	1,376	463	2,642	—	—
少数株主損益調整前当期純利益 Income before minority interests	—	—	—	—	9,276	10,358	9,052
当期(四半期)純利益 Net income	21,539	18,129	15,446	11,976	9,276	10,358	9,052

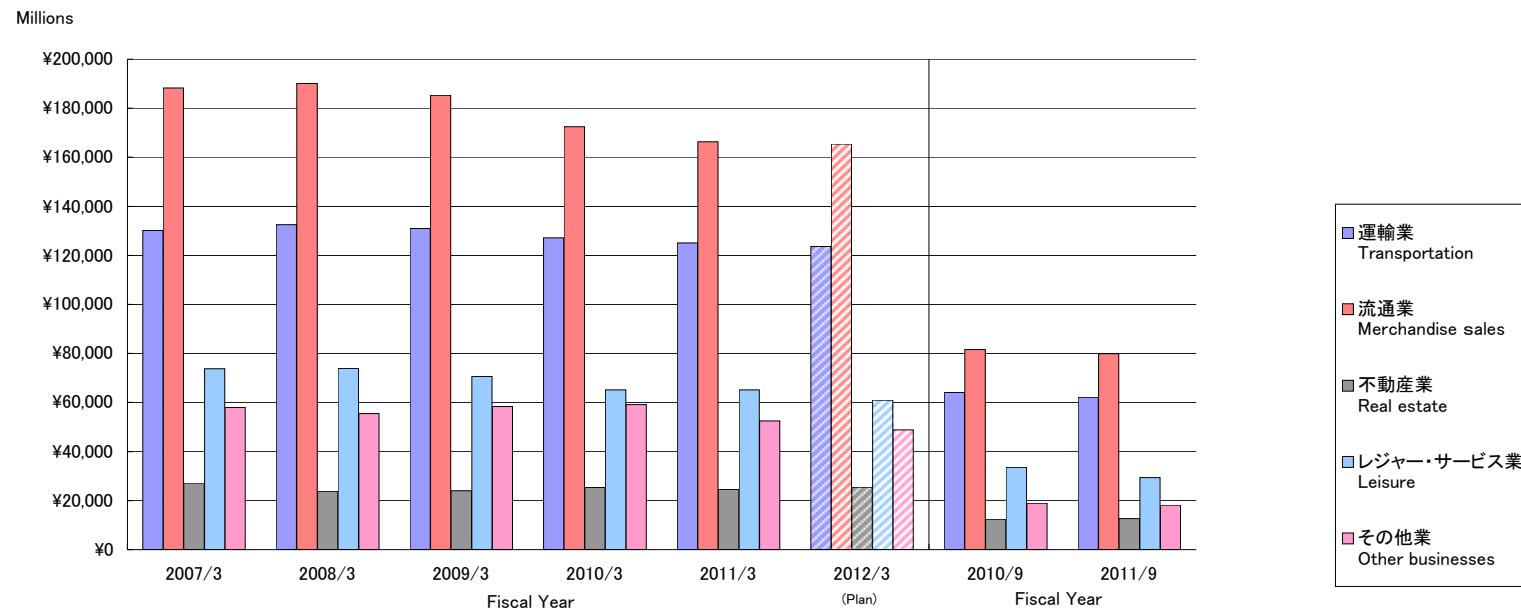


**財務諸表〔連結〕**  
**Financial statements [Consolidated]**
**連結キャッシュ・フロー計算書 Consolidated statements of cash flows**

	2007/3	2008/3	2009/3	2010/3	2011/3	(100万円/¥-mil.)	
						2010/9	2011/9
税金等調整前当期(四半期)純利益 Income before income taxes and minority interests	36,702	31,239	27,254	21,932	20,869	17,077	15,857
減価償却費 Depreciation and amortization	29,091	31,084	33,432	35,871	35,036	17,053	16,290
減損損失 Impairment loss	1,037	4,226	656	362	1,359	—	—
退職給付引当金の増減額(△は減少) Increase (decrease) in provision for retirement benefits	△ 481	55	△ 29	△ 851	△ 1,405	—	—
前払年金費用の増減額(△は増加) Decrease (increase) in prepaid pension costs	△ 3,428	2,146	△ 611	2,371	201	—	—
特定都市鉄道整備準備金の増減額(△は減少) Increase (decrease) in special reserve for expansion of railway transport capacity	△ 2,346	△ 2,346	—	—	—	—	—
たな卸資産評価損 Loss on valuation of inventories	—	—	42	1	—	—	—
販売用土地評価損 Loss on valuation of land for sale	40	16	1	12	98	—	—
投資有価証券評価損益(△は益) Loss (gain) on valuation of investment securities	19	1,068	163	33	7	—	—
固定資産除却損 Loss on retirement of noncurrent assets	2,114	2,482	2,262	2,052	1,735	—	—
固定資産圧縮損 Loss on reduction of noncurrent assets	2,198	1,629	920	450	1,073	—	—
受取利息及び受取配当金 Interest and dividends income	△ 1,019	△ 1,128	△ 1,015	△ 642	△ 910	—	—
支払利息 Interest expenses	5,397	4,896	5,116	5,374	5,521	—	—
社債償還損 Loss on redemption of bonds	1,623	—	—	—	—	—	—
投資有価証券売却損益(△は益) Loss (gain) on sales of investment securities	—	△ 371	—	△ 72	—	—	—
工事負担金等受入額 Proceeds from contribution for construction	△ 2,223	△ 1,208	△ 880	△ 446	△ 1,071	—	—
退店補償金 Compensation for tenants closing	—	3,113	782	1,005	348	—	—
営業債権の増減額(△は増加) Decrease (increase) in operating receivables	△ 6,619	2,238	356	△ 1,646	4,127	—	—
たな卸資産の増減額(△は増加) Decrease (increase) in inventories	3,622	888	△ 138	2,583	1,899	—	—
営業債務の増減額(△は減少) Increase (decrease) in operating debt	1,904	△ 4,422	△ 559	54	△ 1,633	—	—
その他 Other, net	1,408	46	△ 1,418	△ 162	△ 4,393	—	—
小計 Subtotal	69,044	75,653	66,334	68,284	62,863	—	—
利息及び配当金の受取額 Interest and dividends income received	1,022	1,133	1,020	645	914	—	—
利息の支払額 Interest expenses paid	△ 5,098	△ 4,226	△ 4,495	△ 4,740	△ 4,919	—	—
退店補償金の支払額 Compensation paid for tenants closing	—	△ 2,000	△ 603	△ 1,630	△ 1,120	—	—
法人税等の支払額 Income taxes paid	△ 15,882	△ 13,679	△ 18,269	△ 7,895	△ 9,108	△ 4,335	△ 4,236
その他 Other, net	—	—	—	—	—	△ 2,723	△ 1,647
<b>営業活動によるキャッシュ・フロー Net cash provided by (used in) operating activities</b>	<b>49,086</b>	<b>56,881</b>	<b>43,986</b>	<b>54,663</b>	<b>48,630</b>	<b>27,072</b>	<b>26,263</b>
有形固定資産の取得による支出 Purchase of property, plant and equipment	△ 49,815	△ 67,274	△ 88,669	△ 85,173	△ 53,365	△ 27,692	△ 23,242
投資有価証券の取得による支出 Purchase of investment securities	△ 711	△ 703	△ 628	△ 13,297	△ 16	△ 7	△ 307
工事負担金等受入による収入 Proceeds from contribution received for construction	6,399	7,119	7,122	8,466	7,767	4,162	3,030
投資有価証券の売却及び償還による収入 Proceeds from sales and redemption of investment securities	87	3,434	22	325	279	—	—
その他 Other, net	△ 2,070	△ 2,003	△ 690	△ 2,134	△ 605	622	320
<b>投資活動によるキャッシュ・フロー Net cash provided by (used in) investing activities</b>	<b>△ 46,110</b>	<b>△ 59,428</b>	<b>△ 82,844</b>	<b>△ 91,813</b>	<b>△ 45,940</b>	<b>△ 22,914</b>	<b>△ 20,199</b>
短期借入金の純増減額(△は減少) Net increase (decrease) in short-term loans payable	859	△ 810	810	249	2,110	1,047	47
長期借入金の返済による支出 Repayment of long-term loans payable	△ 18,313	△ 12,121	△ 12,308	△ 11,366	△ 8,739	△ 4,221	△ 4,437
社債の発行による収入 Proceeds from issuance of bonds	25,352	29,844	29,878	19,908	—	—	19,906
自己株式の取得による支出 Purchase of treasury stock	△ 117	△ 91	△ 3,819	△ 142	△ 26	△ 12	△ 5
配当金の支払額 Cash dividends paid	△ 3,706	△ 3,705	△ 3,683	△ 3,660	△ 3,660	△ 1,827	△ 1,830
長期借入れによる収入 Proceeds from long-term loans payable	19,950	17,500	30,830	15,750	15,290	—	—
社債の償還による支出 Redemption of bonds	△ 21,623	△ 10,000	△ 10,000	—	—	—	—
長期未払金の返済による支出 Payments for long-term accounts payable-other	△ 680	△ 3,447	—	—	—	—	—
その他 Other, net	12	25	△ 232	△ 290	△ 299	△ 147	△ 177
<b>財務活動によるキャッシュ・フロー Net cash provided by (used in) financing activities</b>	<b>1,733</b>	<b>17,194</b>	<b>31,474</b>	<b>20,448</b>	<b>4,673</b>	<b>△ 5,160</b>	<b>13,501</b>
現金及び現金同等物に係る換算差額 Effect of exchange rate change on cash and cash equivalents	4	3	1	6	7	5	1
現金及び現金同等物の増減額(△は減少) Net increase (decrease) in cash and cash equivalents	4,713	14,650	△ 7,382	△ 16,694	7,371	△ 997	19,566
現金及び現金同等物の期首残高 Cash and cash equivalents at beginning of period	38,802	43,516	58,167	50,784	34,090	34,090	41,461
現金及び現金同等物の期末残高 Cash and cash equivalents at end of period	43,516	58,167	50,784	34,090	41,461	33,093	61,028

セグメント情報  
Segment information

営業収益 Operating revenues



(100万円/¥-mil.)

(10億円/¥-bil.)

(100万円/¥-mil.)

	2007/3	2008/3	2009/3	2010/3	2011/3	2012/3(Plan)	2010/9	2011/9
運輸業 Transportation	130,097	132,453	130,956	127,099	125,081	123.5	64,069	<b>62,130</b>
流通業 Merchandise sales	188,240	190,141	185,237	172,455	166,316	165.4	81,622	<b>79,936</b>
不動産業 Real estate	27,201	23,745	23,964	25,330	24,601	25.4	12,432	<b>12,614</b>
レジャー・サービス業 Leisure	73,718	73,835	70,684	65,200	65,148	60.9	33,529	<b>29,357</b>
その他業 Other businesses	57,933	55,451	58,305	59,100	52,463	48.8	18,881	<b>18,168</b>
合計 Total	477,191	475,627	469,148	449,187	433,611	424.2	210,536	<b>202,207</b>
消去 Elimination	( 46,994 )	( 46,437 )	( 48,997 )	( 45,940 )	( 42,439 )	( 36.6 )	( 14,813 )	( <b>13,116</b> )
連結 Consolidated	430,197	429,190	420,150	403,247	391,172	387.6	195,722	<b>189,091</b>

セグメント情報  
Segment information

## 営業収益の明細 Operating revenues transaction

(100万円/¥-mil.)

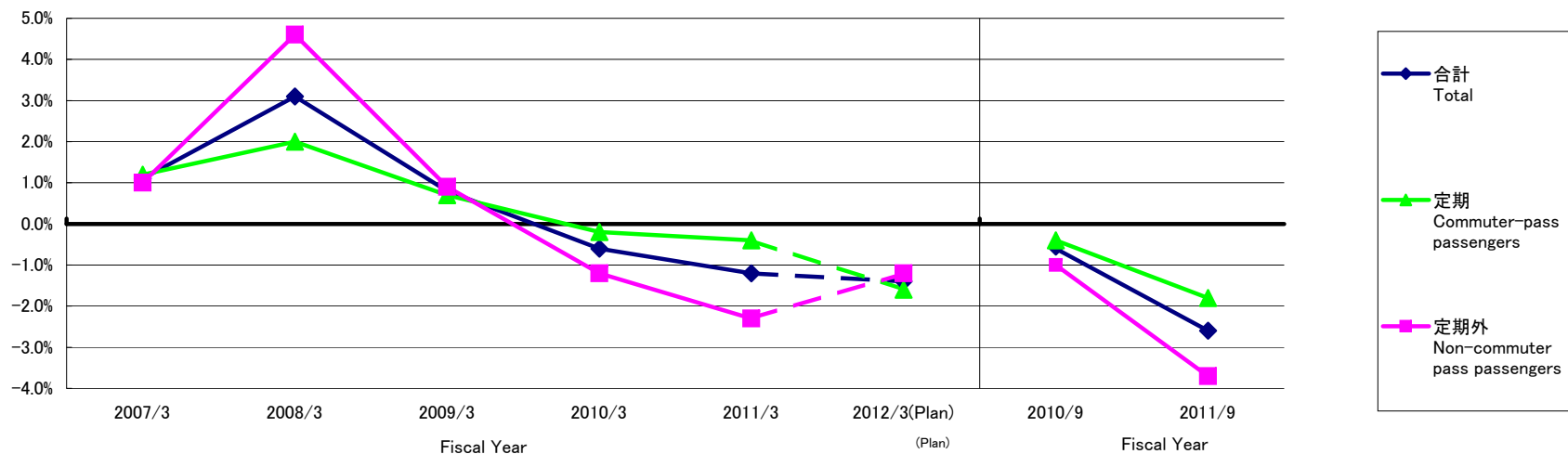
	2007/3	2008/3	2009/3	2010/3	2011/3	2010/9	2011/9
<b>運輸業 Transportation</b>							
鉄道事業 Railways	81,238	82,902	82,680	81,500	79,826	40,655	39,452
バス事業 Bus services	28,141	28,610	28,844	28,104	28,437	14,915	14,514
タクシー業 Taxi services	14,604	14,665	13,749	12,306	11,794	5,982	5,672
その他 Others	3,101	3,156	2,554	2,226	2,170	1,087	1,111
セグメント間取引 Intersegment	3,011	3,118	3,129	2,962	2,852	1,428	1,379
合計 Total	130,097	132,453	130,956	127,099	125,081	64,069	62,130
<b>流通業 Merchandise sales</b>							
百貨店業 Department stores	111,628	110,620	104,939	96,444	92,103	44,889	43,295
ストア業 Retail stores	39,761	40,865	41,317	38,306	37,682	18,655	18,585
書籍販売業 Retail stores for books	11,191	11,816	12,439	11,746	10,869	5,382	5,229
駅売店業 Retail stores at stations	9,657	9,733	9,753	9,463	8,805	4,641	4,578
その他 Others	13,472	14,402	14,523	14,484	14,527	7,144	7,098
セグメント間取引 Intersegment	2,528	2,703	2,263	2,010	2,328	909	1,147
合計 Total	188,240	190,141	185,237	172,455	166,316	81,622	79,936
<b>不動産業 Real estate</b>							
不動産賃貸業 Land and building leasing	15,455	16,850	17,119	18,048	17,980	8,886	9,024
不動産販売業 Development for selling by lots	8,485	3,303	3,151	3,823	3,291	1,863	1,913
その他 Others	1,294	1,508	1,383	1,161	1,286	651	574
セグメント間取引 Intersegment	1,965	2,082	2,310	2,296	2,042	1,032	1,101
合計 Total	27,201	23,745	23,964	25,330	24,601	12,432	12,614
<b>レジャー・サービス業 Leisure</b>							
ホテル業 Hotels	37,163	37,292	35,459	34,156	33,447	16,863	13,564
旅行業 Travel services	18,706	18,641	18,058	16,021	16,028	9,341	8,656
広告代理業 Advertising services	5,875	5,805	5,270	4,479	5,093	2,348	2,350
その他 Others	6,349	6,676	6,586	6,156	5,904	3,155	3,080
セグメント間取引 Intersegment	5,622	5,420	5,309	4,386	4,674	1,820	1,705
合計 Total	73,718	73,835	70,684	65,200	65,148	33,529	29,357
<b>その他業 Other businesses</b>							
ビル総合管理業 Building maintenance	8,666	8,775	9,156	9,069	9,202	4,377	4,277
車両整備業 Railway car maintenance	6,453	5,761	5,901	6,631	6,067	2,564	1,917
建築・土木業 Construction	8,171	7,015	6,287	8,126	5,634	1,808	3,648
その他 Others	776	787	976	989	1,017	507	543
セグメント間取引 Intersegment	33,865	33,112	35,984	34,283	30,542	9,622	7,782
合計 Total	57,933	55,451	58,305	59,100	52,463	18,881	18,168

セグメント情報  
Segment information

鉄道輸送人員 Passengers transported (Railways)

	2007/3	2008/3	2009/3	2010/3	2011/3	2012/3(Plan)	(千人 Thousands of people)	
							2010/9	2011/9
定期 Commuter-pass passengers	355,858	363,097	365,559	364,696	363,257	357,528	186,840	<b>183,401</b>
通勤 Commuter-pass passengers	265,076	272,275	274,679	272,785	269,848	265,481	136,229	<b>133,845</b>
通学 Commuter-pass passengers (Students)	90,782	90,822	90,880	91,911	93,409	92,047	50,611	<b>49,556</b>
定期外 Non-commuter pass passengers	257,362	269,291	271,621	268,479	262,182	259,024	133,438	<b>128,501</b>
合計 Total	613,220	632,388	637,180	633,175	625,439	616,552	320,278	<b>311,902</b>

鉄道輸送人員の対前年増減率 Variation ratio against previous year of passengers transported (Railways)



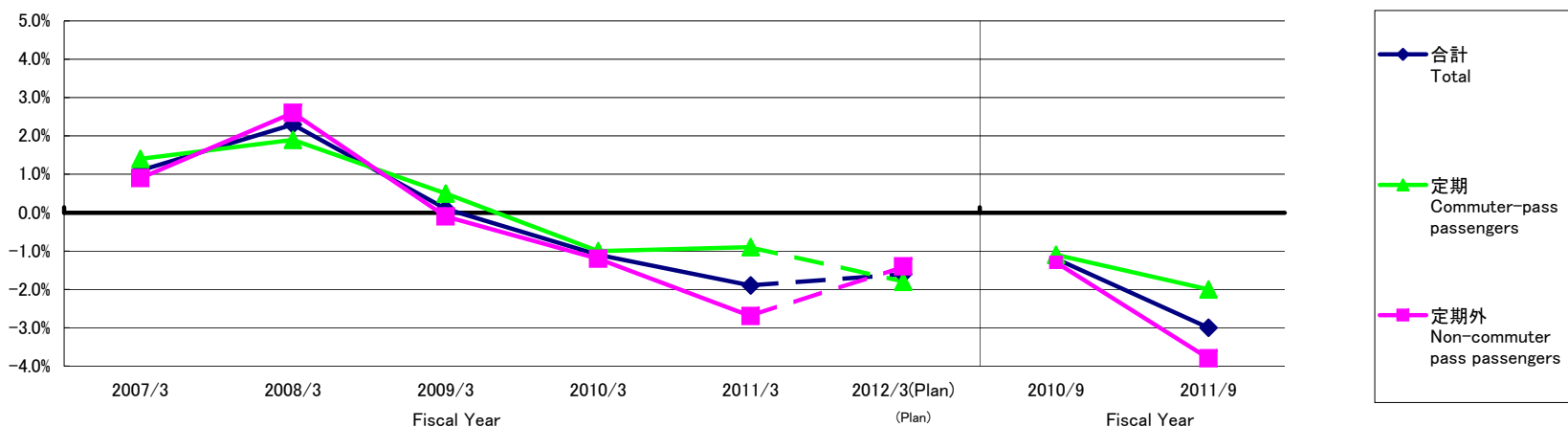
	2007/3	2008/3	2009/3	2010/3	2011/3	2012/3(Plan)	(% , percent)	
							2010/9	2011/9
定期 Commuter-pass passengers	1.2	2.0	0.7	△ 0.2	△ 0.4	△ 1.6	△ 0.4	<b>△ 1.8</b>
通勤 Commuter-pass passengers	2.1	2.7	0.9	△ 0.7	△ 1.1	△ 1.6	△ 1.3	<b>△ 1.7</b>
通学 Commuter-pass passengers (Students)	△ 1.4	0.0	0.1	1.1	1.6	△ 1.5	2.1	<b>△ 2.1</b>
定期外 Non-commuter pass passengers	1.0	4.6	0.9	△ 1.2	△ 2.3	△ 1.2	△ 1.0	<b>△ 3.7</b>
合計 Total	1.1	3.1	0.8	△ 0.6	△ 1.2	△ 1.4	△ 0.6	<b>△ 2.6</b>

セグメント情報  
Segment information

旅客運輸収入 Passenger revenues(Railways)

	2007/3	2008/3	2009/3	2010/3	2011/3	2012/3(Plan)	(100万円/¥-mil.)	
							2010/9	2011/9
定期 Commuter-pass passengers	33,170	33,786	33,948	33,624	33,324	32,735	16,961	<b>16,624</b>
通勤 Commuter-pass passengers	29,510	30,160	30,333	29,989	29,631	29,102	14,957	<b>14,669</b>
通学 Commuter-pass passengers (Students)	3,660	3,626	3,614	3,634	3,693	3,632	2,003	<b>1,955</b>
定期外 Non-commuter pass passengers	44,995	46,166	46,117	45,556	44,320	43,693	22,590	<b>21,730</b>
合計 Total	78,165	79,953	80,065	79,180	77,644	76,429	39,552	<b>38,354</b>

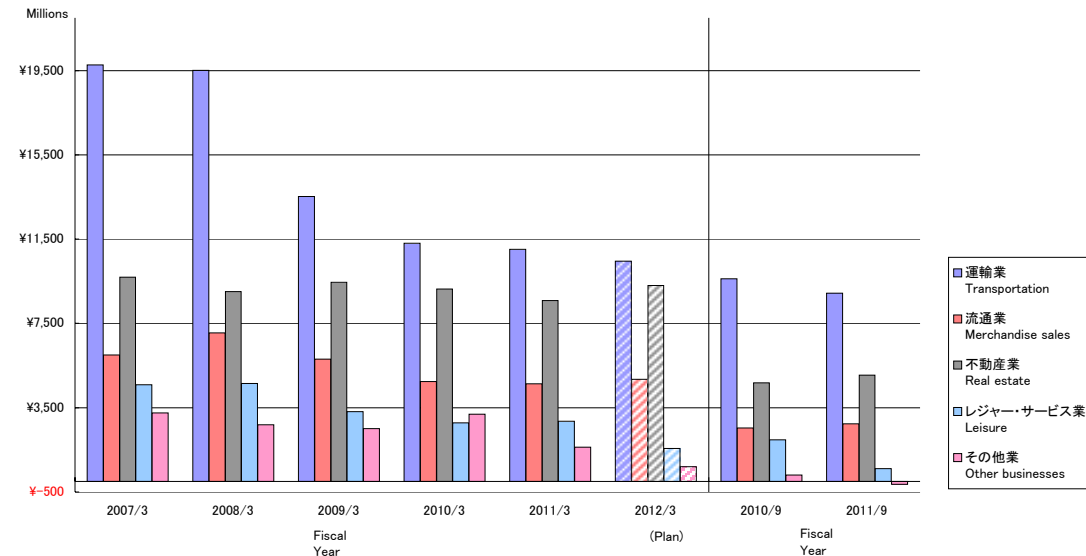
旅客運輸収入の対前年増減率 Variation ratio against previous year of Passenger revenues(Railways)



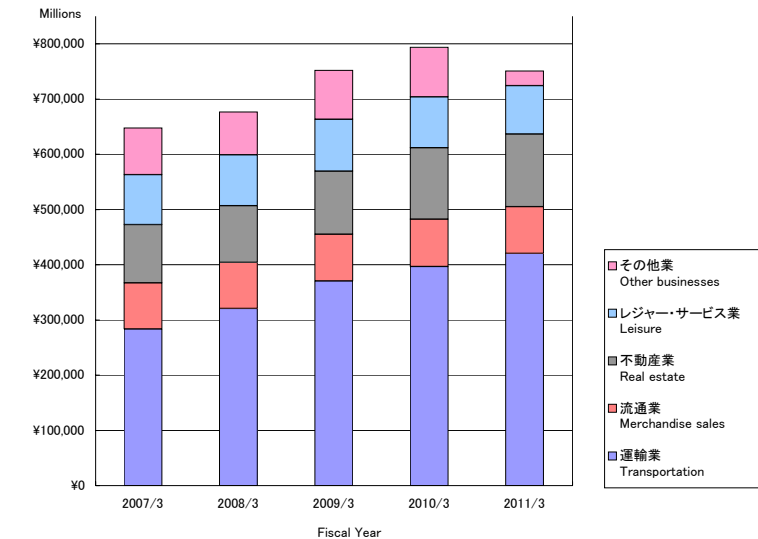
	2007/3	2008/3	2009/3	2010/3	2011/3	2012/3(Plan)	(% , percent)	
							2010/9	2011/9
定期 Commuter-pass passengers	1.4	1.9	0.5	△ 1.0	△ 0.9	△ 1.8	△ 1.1	<b>△ 2.0</b>
通勤 Commuter-pass passengers	1.8	2.2	0.6	△ 1.1	△ 1.2	△ 1.8	△ 1.5	<b>△ 1.9</b>
通学 Commuter-pass passengers (Students)	△ 1.9	△ 0.9	△ 0.3	0.5	1.6	△ 1.6	2.1	<b>△ 2.4</b>
定期外 Non-commuter pass passengers	0.9	2.6	△ 0.1	△ 1.2	△ 2.7	△ 1.4	△ 1.3	<b>△ 3.8</b>
合計 Total	1.1	2.3	0.1	△ 1.1	△ 1.9	△ 1.6	△ 1.2	<b>△ 3.0</b>

セグメント情報  
Segment information

営業利益 Operating income



総資産 Total Assets

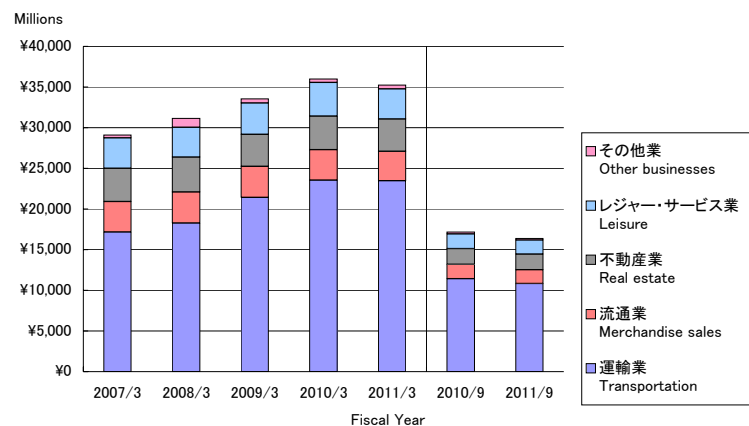


営業利益 Operating income	2007/3	2008/3	2009/3	2010/3	2011/3	2012/3(Plan)	2010/9	2011/9
運輸業 Transportation	19,760	19,513	13,528	11,297	11,009	10.4	9,620	<b>8,935</b>
流通業 Merchandise sales	6,007	7,044	5,803	4,736	4,629	4.8	2,545	<b>2,733</b>
不動産業 Real estate	9,690	9,013	9,447	9,136	8,579	9.3	4,686	<b>5,043</b>
レジャー・サービス業 Leisure	4,595	4,650	3,310	2,777	2,864	1.5	1,975	<b>616</b>
その他業 Other businesses	3,257	2,691	2,514	3,198	1,634	0.6	307	<b>△ 131</b>
合計 Total	43,312	42,913	34,604	31,147	28,717	26.8	19,136	<b>17,196</b>
消去 Elimination	( 1,013 )	( 972 )	( 1,023 )	( 1,199 )	( 496 )	( 0.0 )	31	( <b>32</b> )
連結 Consolidated	42,298	41,941	33,581	29,947	28,221	26.8	19,167	<b>17,164</b>

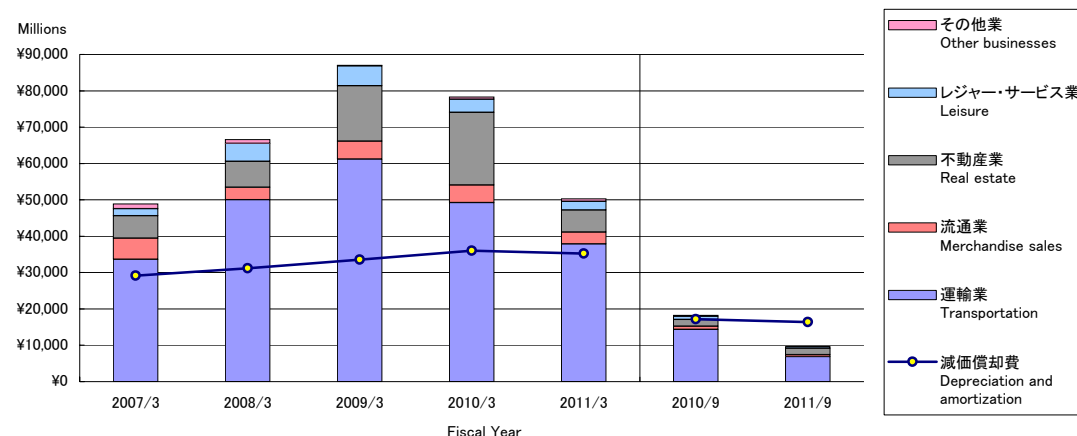
総資産 Total Assets	2007/3	2008/3	2009/3	2010/3	2011/3
運輸業 Transportation	283,292	320,682	370,646	396,713	420,482
流通業 Merchandise sales	83,820	83,592	84,442	85,605	84,268
不動産業 Real estate	105,169	102,242	114,158	129,337	131,859
レジャー・サービス業 Leisure	90,520	92,698	94,236	92,483	87,834
その他業 Other businesses	84,889	77,297	88,763	89,902	26,582
合計 Total	647,692	676,513	752,247	794,042	751,026
消去 Elimination	( 468 )	( 16,351 )	( 60,155 )	( 62,313 )	( 4,047 )
連結 Consolidated	648,161	660,161	692,091	731,728	746,979

セグメント情報  
Segment information

減価償却費 Depreciation and amortization



減価償却費と設備投資 Depreciation and amortization & Capital expenditures



(100万円/¥-mil.)

減価償却費 Depreciation and amortization	2007/3	2008/3	2009/3	2010/3	2011/3	2010/9	2011/9
運輸業 Transportation	17,154	18,272	21,414	23,543	23,455	11,421	10,840
流通業 Merchandise sales	3,750	3,798	3,817	3,723	3,648	1,774	1,691
不動産業 Real estate	4,102	4,293	3,945	4,140	3,968	1,937	1,924
レジャー・サービス業 Leisure	3,719	3,682	3,875	4,126	3,702	1,814	1,714
その他業 Other businesses	381	1,114	478	459	452	228	195
合計 Total	29,108	31,161	33,530	35,993	35,228	17,176	16,365
消去 Elimination	( 16 )	( 77 )	( 97 )	( 122 )	( 191 )	( 122 )	( 75 )
連結 Consolidated	29,091	31,084	33,432	35,871	35,036	17,053	16,290

設備投資 Capital expenditures	2007/3	2008/3	2009/3	2010/3	2011/3	2010/9	2011/9
運輸業 Transportation	33,662	50,020	61,180	49,219	37,899	14,364	6,844
流通業 Merchandise sales	5,759	3,402	4,946	4,874	3,228	841	537
不動産業 Real estate	6,213	7,133	15,212	19,936	6,069	1,845	1,814
レジャー・サービス業 Leisure	1,898	4,969	5,460	3,612	2,382	950	417
その他業 Other businesses	1,342	1,031	184	642	695	191	82
合計 Total	48,877	66,556	86,984	78,285	50,275	18,193	9,696
消去 Elimination	( 848 )	( 821 )	( 988 )	( 660 )	( 733 )	( 321 )	748
連結 Consolidated	48,028	65,735	85,996	77,624	49,541	17,872	10,445