



Keio Corporation

FACT BOOK 2009

Last five-year Summary(Consolidated)

(連絡先)

contact address

京王電鉄株式会社 総合企画本部 経理部
Keio Corporation

久保 野島
Kubo Nojima

PHONE : 042-337-3135

F A X : 042-374-9810

Contents

Data highlights [Consolidated]

営業収益 Operating revenue	1
営業利益 Operating income	1
当期純利益 Net income	1
総資産と純資産 Total assets & Net assets	2
利益剰余金 Retained earnings	2
キャッシュ・フロー Cash flows	3
現金及び現金同等物の期末残高 Cash and cash equivalents at end of period	3
有利子負債 Interest-bearing debt	3

Financial statements [Consolidated]

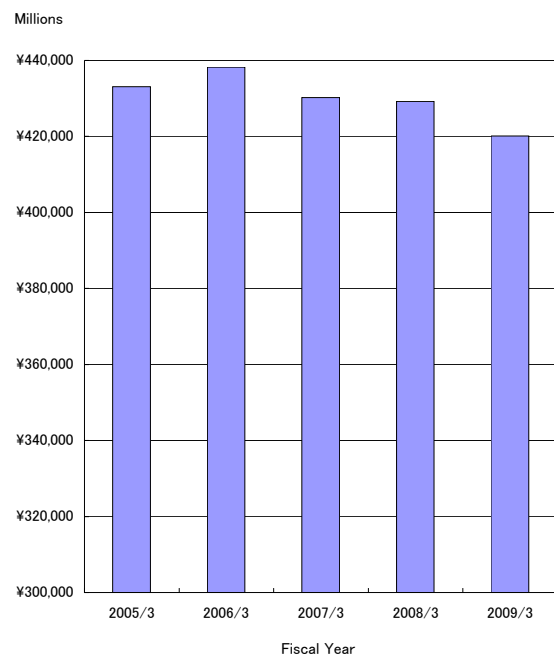
連結貸借対照表 Consolidated balance sheets	4
連結損益計算書 Consolidated statements of income	6
連結キャッシュ・フロー計算書 Consolidated statements of cash flows	7

Segment information

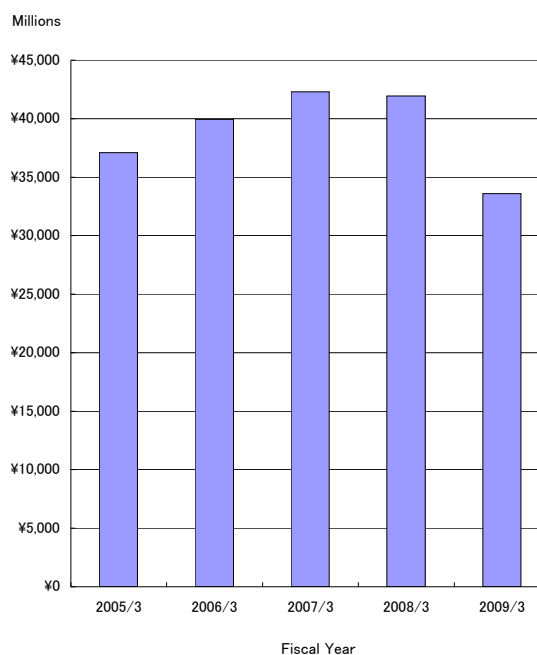
営業収益 Operating revenue	8
営業収益の明細 Operating revenues transaction	9
・運輸業 Transportation … 9	
・鉄道輸送人員の対前年増減率 …9	
Variation ratio against previous year of passengers transported (Railways)	
・流通業 Merchandise sales … 10	
・不動産業 Real estate … 10	
・レジャー・サービス業 Leisure … 10	
・その他 Others … 10	
営業利益 Operating income	11
総資産 Total assets	11
減価償却費 Depreciation and amortization	12
減価償却費と設備投資 Depreciation and amortization & Capital expenditures	12
従業員数 Numbers of employee	13

データ・ハイライト〔連結〕
Data highlights [Consolidated]

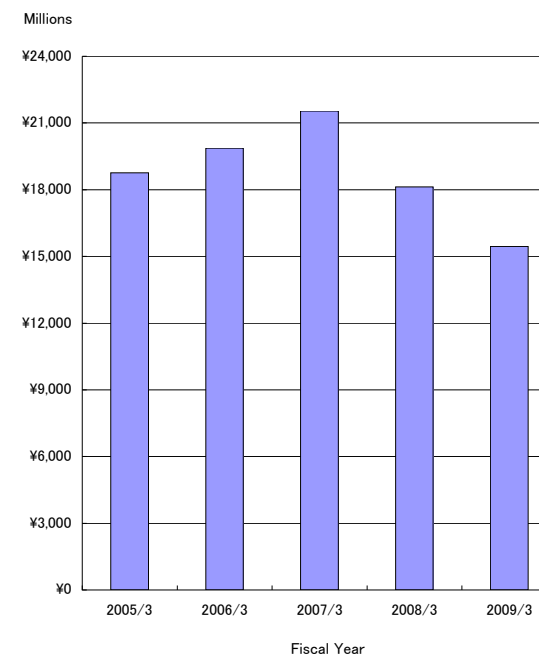
営業収益
Operating revenue



営業利益
Operating income



当期純利益
Net income

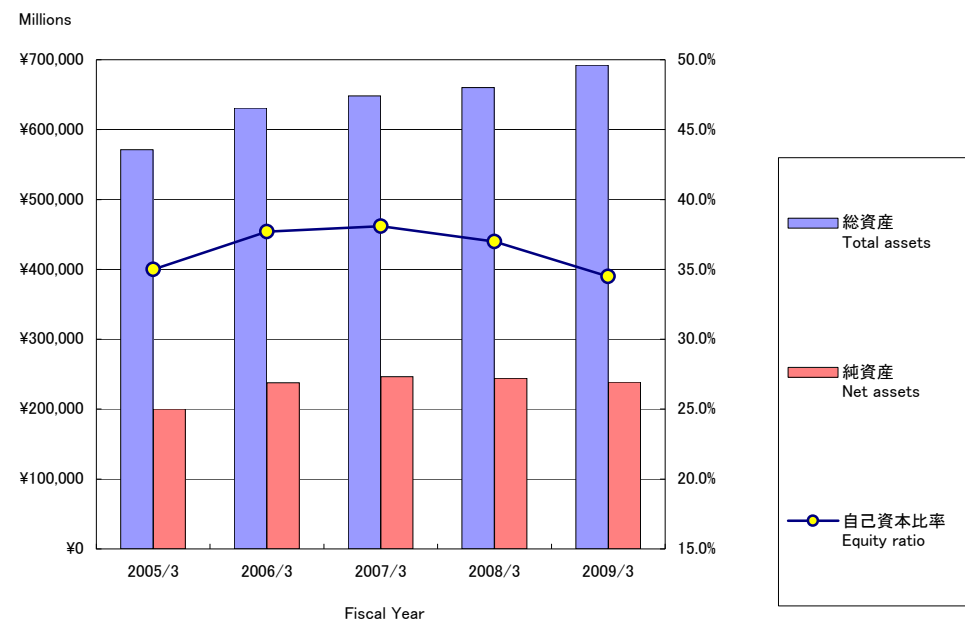


(100万円 millions of yen)

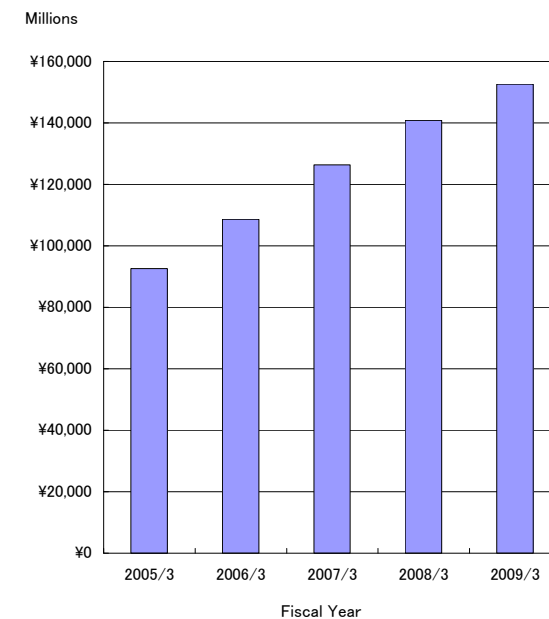
	2005/3	2006/3	2007/3	2008/3	2009/3
営業収益 Operating revenues	433,071	438,253	430,197	429,190	420,150
営業利益 Operating income	37,096	39,937	42,298	41,941	33,581
当期純利益 Net income	18,764	19,867	21,539	18,129	15,446

データ・ハイライト〔連結〕
Data highlights [Consolidated]

総資産と純資産
Total assets & Net assets



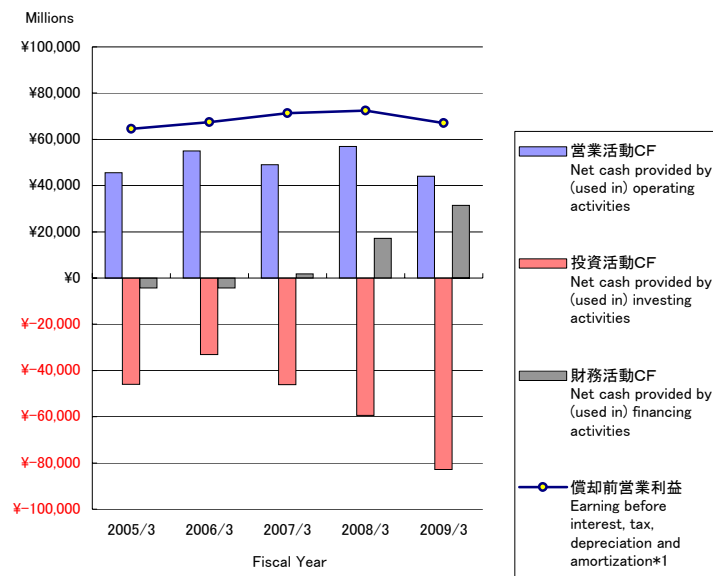
利益剰余金
Retained earnings



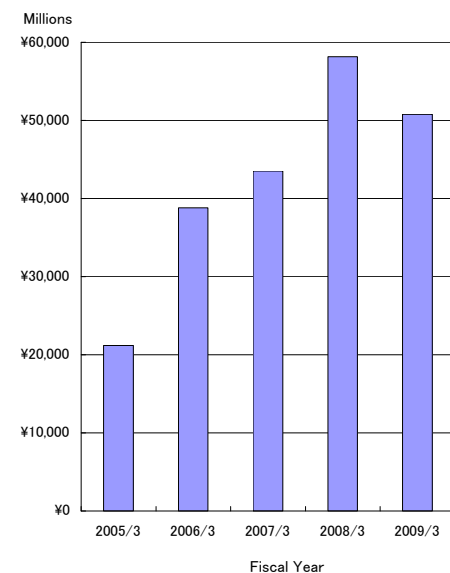
	(100万円 millions of yen)				
	2005/3	2006/3	2007/3	2008/3	2009/3
総資産 Total assets	571,311	630,700	648,161	660,161	692,091
純資産 Net assets	199,997	237,644	246,629	244,185	238,873
自己資本比率 Equity ratio	35.0%	37.7%	38.1%	37.0%	34.5%
利益剰余金 Retained earnings	92,601	108,651	126,389	140,812	152,572

データ・ハイライト〔連結〕
Data highlights〔Consolidated〕

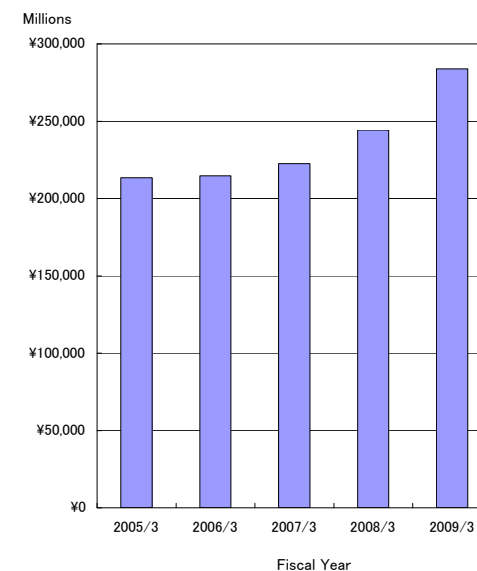
キャッシュ・フロー
Cash flows



現金及び現金同等物の期末残高
Cash and cash equivalents at end of period



有利子負債
Interest-bearing debt



	2005/3	2006/3	2007/3	2008/3	2009/3
営業活動CF Net cash provided by (used in) operating activities	45,524	54,944	49,086	56,881	43,986
投資活動CF Net cash provided by (used in) investing activities	△ 45,950	△ 33,040	△ 46,110	△ 59,428	△ 82,844
財務活動CF Net cash provided by (used in) financing activities	△ 4,314	△ 4,299	1,733	17,194	31,474
償却前営業利益 Earning before interest, tax, depreciation and amortization*1	64,605	67,407	71,390	72,381	67,014
現金及び現金同等物の期末残高 Cash and cash equivalents at end of period	21,192	38,802	43,516	58,167	50,784
有利子負債 Interest-bearing debt*2	213,409	214,778	222,531	244,254	283,794

(100万円 millions of yen)

*1 償却前営業利益 = 営業利益 + 減価償却費

Earning before interest, tax, depreciation and amortization = Operating income + Depreciation and amortization

*2 有利子負債 = 借入金 + 社債 + 鉄道建設・運輸施設整備支援機構未払金

Interest-bearing debt = Borrowings + Bonds + Long-term accounts payable from other financial institutions

財務諸表〔連結〕

Financial statements [Consolidated]

連結貸借対照表 Consolidated balance sheets

	2005/3	2006/3	2007/3	2008/3	2009/3
	(100万円 millions of yen)				
資産の部 Assets					
流動資産 Current assets	82,994	99,659	106,687	118,358	110,681
現金及び預金 Cash and deposits	22,239	28,833	29,546	49,199	47,806
受取手形及び売掛金 Notes and accounts receivable-trade	26,239	27,630	34,251	31,990	30,927
短期貸付金 Short-term loans receivable	454	10,396	14,533	9,385	3,349
有価証券 Short-term investment securities	34	—	1	15	—
たな卸資産 Inventories	28,157	25,771	22,130	20,885	—
商品及び製品 Merchandise and finished goods	—	—	—	—	16,808
仕掛品 Work in process	—	—	—	—	2,974
原材料及び貯蔵品 Raw materials and supplies	—	—	—	—	1,095
繰延税金資産 Deferred tax assets	3,681	4,146	3,693	3,752	4,268
その他 Other	2,431	3,212	2,812	3,311	3,604
貸倒引当金 Allowance for doubtful accounts	△ 245	△ 331	△ 281	△ 181	△ 155
固定資産 Noncurrent assets	488,316	531,040	541,473	541,803	581,410
有形固定資産 Property, plant and equipment	406,637	411,727	430,482	464,024	518,695
建物及び構築物(純額) Buildings and structures, net	240,156	237,869	238,935	236,901	243,038
機械装置及び運搬具(純額) Machinery, equipment and vehicles, net	32,779	33,502	35,513	38,187	43,856
土地 Land	105,386	111,329	116,844	133,369	149,992
建設仮勘定 Construction in progress	19,859	20,401	28,822	44,623	70,154
その他(純額) Other, net	8,455	8,624	10,365	10,943	11,653
無形固定資産 Intangible assets	3,318	3,010	4,602	5,457	5,486
投資その他の資産 Investments and other assets	78,360	116,302	106,388	72,320	57,227
投資有価証券 Investment securities	57,904	99,341	85,449	53,771	31,726
長期貸付金 Long-term loans receivable	514	553	572	568	—
繰延税金資産 Deferred tax assets	8,366	7,860	7,444	7,972	14,960
その他 Other	11,987	8,640	13,076	10,335	10,991
貸倒引当金 Allowance for doubtful accounts	△ 412	△ 93	△ 154	△ 326	△ 451
資産合計 Total Assets	571,311	630,700	648,161	660,161	692,091

財務諸表〔連結〕 Financial statements [Consolidated]

連結貸借対照表 Consolidated balance sheets

	2005/3	2006/3	2007/3	2008/3	2009/3
	(100万円 millions of yen)				
負債の部 Liabilities					
流動負債 Current liabilities	140,862	158,124	172,156	179,443	167,850
支払手形及び買掛金 Notes and accounts payable-trade	23,095	22,613	23,559	20,517	20,287
短期借入金 Short-term loans payable	50,410	57,988	52,720	52,097	51,965
1年以内償還社債 Current portion of bonds	—	—	10,000	10,000	—
未払法人税等 Income taxes payable	7,500	10,164	8,090	11,110	3,246
前受金 Advances received	9,438	9,968	16,165	21,818	28,621
繰延税金負債 Deferred tax liabilities	—	—	—	—	72
賞与引当金 Provision for bonuses	2,646	2,627	2,572	2,423	2,352
役員賞与引当金 Provision for directors' bonuses	—	—	95	95	95
その他の引当金 Other provision	393	963	268	1,515	1,453
その他 Other	47,376	53,797	58,685	59,866	59,754
固定負債 Noncurrent liabilities	223,413	230,239	227,029	236,532	285,368
社債 Bonds payable	60,000	60,000	55,932	76,512	107,092
長期借入金 Long-term loans payable	96,452	91,072	98,836	104,027	123,491
長期未払金 Long-term accounts payable-other	6,615	5,775	5,094	1,647	—
繰延税金負債 Deferred tax liabilities	5,684	20,362	15,031	384	—
退職給付引当金 Provision for retirement benefits	28,395	25,270	24,788	24,843	24,814
役員退職慰労金引当金 Reserve for retirement benefits to directors & corporate auditors	665	727	—	—	—
その他 Other	25,599	27,030	27,344	29,116	29,970
特別法上の準備金 Reserve under special act	7,038	4,692	2,346	—	—
特定都市鉄道整備準備金 Special reserve for expansion of railway transport capacity	7,038	4,692	2,346	—	—
負債合計 Total liabilities	371,314	393,056	401,531	415,976	453,218
資本の部 Shareholders' equity					
資本金 Capital stock	59,023	59,023	—	—	—
資本剰余金 Capital surplus	42,016	42,017	—	—	—
利益剰余金 Retained earnings	92,601	108,651	—	—	—
その他有価証券評価差額金 Valuation difference on available-for-sale securities	19,624	43,155	—	—	—
自己株式 Treasury stock	△ 13,269	△ 15,204	—	—	—
資本合計 Total shareholders' equity	199,997	237,644	—	—	—
負債及び資本合計 Total Liabilities and shareholders' equity	571,311	630,700	—	—	—
純資産の部 Net assets					
株主資本 Shareholders' equity	—	—	212,125	226,482	234,582
資本金 Capital stock	—	—	59,023	59,023	59,023
資本剰余金 Capital surplus	—	—	42,022	42,025	42,010
利益剰余金 Retained earnings	—	—	126,389	140,812	152,572
自己株式 Treasury stock	—	—	△ 15,310	△ 15,380	△ 19,024
評価・換算差額等 Valuation and translation adjustments	—	—	34,504	17,703	4,290
その他有価証券評価差額金 Valuation difference on available-for-sale securities	—	—	34,504	17,703	4,290
純資産合計 Total net assets	—	—	246,629	244,185	238,873
負債純資産合計 Total liabilities and net assets	—	—	648,161	660,161	692,091

財務諸表〔連結〕 Financial statements [Consolidated]

連結損益計算書 Consolidated statements of income

	(100万円 millions of yen)				
	2005/3	2006/3	2007/3	2008/3	2009/3
営業損益 Operating income and expenses					
営業収益 Operating revenue	433,071	438,253	430,197	429,190	420,150
営業費 Operating expenses	395,974	398,316	387,899	387,248	386,569
運輸業等営業費及び売上原価 Operating expenses and cost of sales of transportation	346,242	349,669	340,239	339,426	338,688
販売費及び一般管理費 Selling, general and administrative expenses	49,732	48,647	47,659	47,822	47,880
営業利益 Operating income	37,096	39,937	42,298	41,941	33,581
営業外損益 Non operating income and expenses					
営業外収益 Non-operating income	2,362	2,351	2,291	2,464	2,557
受取利息及び受取配当金 Interest income and dividends income	505	746	1,019	1,128	1,015
持分法による投資利益 Equity in earnings of affiliates	61	114	95	95	121
雑収入 Miscellaneous income	1,795	1,490	1,177	1,240	1,419
営業外費用 Non-operating expenses	7,735	5,920	7,794	5,533	5,878
支払利息 Interest expenses	4,984	4,918	5,397	4,896	5,116
雑支出 Miscellaneous expenses	2,751	1,002	2,396	636	761
経常利益 Ordinary income	31,723	36,368	36,795	38,872	30,260
特別損益 Extraordinary profit and loss					
特別利益 Extraordinary income	4,633	5,170	4,997	4,943	1,347
工事負担金等受入額 Contribution for construction	676	1,935	2,223	1,208	880
固定資産売却益 Gain on sales of noncurrent assets	472	140	135	453	225
特定都市鉄道整備準備金取崩額 Reversal of special reserve for expansion of railway transport capacity	2,346	2,346	2,346	2,346	—
投資有価証券売却益 Gain on sales of investment securities	858	184	—	371	—
年金資産返還時数理差異償却額 Gain on actuarial assumptions in retirement benefits	—	—	—	367	—
その他 Other	279	563	292	196	241
特別損失 Extraordinary loss	4,368	8,005	5,090	12,576	4,353
固定資産除却損 Loss on retirement of noncurrent assets	1,562	1,649	1,228	1,245	1,172
固定資産圧縮損 Loss on reduction of noncurrent assets	1,137	1,932	2,198	1,629	920
退店補償金 Compensation for tenants closing	—	—	—	3,113	782
減損損失 Impairment loss	733	2,698	1,037	4,226	656
固定資産売却損 Loss on sales of noncurrent assets	—	—	134	58	65
投資有価証券評価損 Loss on revaluation of investments in securities	118	—	—	1,068	—
商品券等回収損失引当金繰入額 Provision of reserve for loss from redemption of gift vouchers for prior periods	—	—	—	355	—
特別退職金 Special retirement payments	—	881	123	—	—
固定資産臨時償却 Non-recurring depreciation	—	713	—	—	—
退職金制度変更損失 Loss on the revision of the retirement benefits plan	688	—	—	—	—
その他 Other	127	130	368	880	756
税金等調整前当期純利益 Income before income taxes and minority interests	31,988	33,532	36,702	31,239	27,254
法人税、住民税及び事業税 Income taxes-current	12,581	15,095	13,668	16,814	10,431
法人税等調整額 Income taxes-deferred	642	△ 1,429	1,494	△ 3,704	1,376
当期純利益 Net income	18,764	19,867	21,539	18,129	15,446

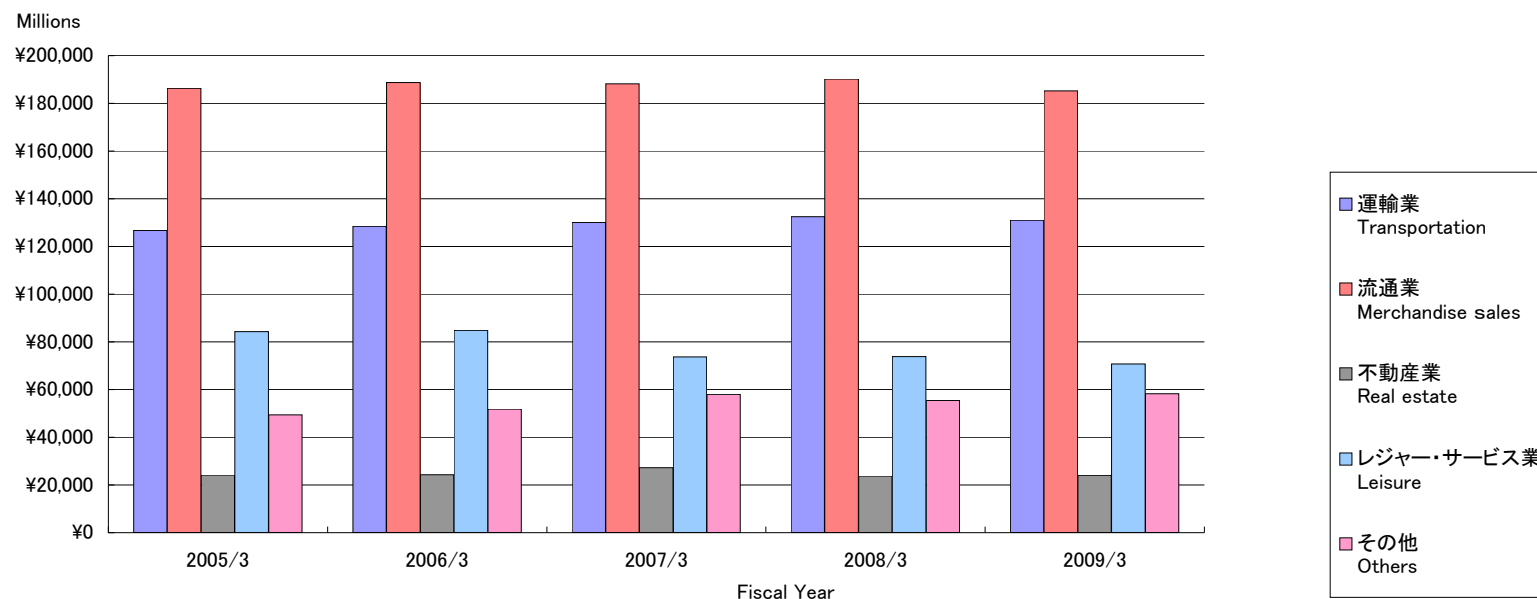
財務諸表〔連結〕 Financial statements [Consolidated]

連結キャッシュ・フロー計算書 Consolidated statements of cash flows

	2005/3	2006/3	2007/3	2008/3	2009/3
	(100万円 millions of yen)				
税金等調整前当期純利益 Income before income taxes and minority interests	31,988	33,532	36,702	31,239	27,254
減価償却費 Depreciation and amortization	27,509	28,183	29,091	31,084	33,432
減損損失 Impairment loss	733	2,698	1,037	4,226	656
退職給付引当金の増減額(△は減少) Increase (decrease) in provision for retirement benefits	△ 3,041	△ 1,438	△ 481	55	△ 29
前払年金費用の増減額(△は増加) Decrease (increase) in prepaid pension costs	—	—	△ 3,428	2,146	△ 611
特定都市鉄道整備準備金の増減額(△は減少) Increase (decrease) in special reserve for expansion of railway transport capacity	△ 2,346	△ 2,346	△ 2,346	△ 2,346	—
たな卸資産評価損 Loss on valuation of inventories	—	—	—	—	42
販売用土地評価損 Loss on valuation of land for sale	840	178	40	16	1
投資有価証券評価損益(△は益) Loss (gain) on valuation of investment securities	118	16	19	1,068	163
固定資産除却損 Loss on retirement of noncurrent assets	1,623	2,618	2,114	2,482	2,262
固定資産圧縮損 Loss on reduction of noncurrent assets	1,137	1,586	2,198	1,629	920
受取利息及び受取配当金 Interest and dividends income	△ 505	△ 746	△ 1,019	△ 1,128	△ 1,015
支払利息 Interest expenses	4,984	4,918	5,397	4,896	5,116
社債償還損 Loss on redemption of bonds	—	—	1,623	—	—
投資有価証券売却損益(△は益) Loss (gain) on sales of investment securities	△ 858	△ 184	—	△ 371	—
工事負担金等受入額 Proceeds from contribution for construction	△ 676	△ 1,935	△ 2,223	△ 1,208	△ 880
退店補償金 Compensation for tenants closing	—	—	—	3,113	782
営業債権の増減額(△は増加) Decrease (increase) in operating receivables	△ 421	△ 1,391	△ 6,619	2,238	356
たな卸資産の増減額(△は増加) Decrease (increase) in inventories	1,109	2,259	3,622	888	△ 138
営業債務の増減額(△は減少) Increase (decrease) in operating debt	605	2,239	1,904	△ 4,422	△ 559
その他 Other, net	4,090	984	1,408	46	△ 1,418
小計 Subtotal	66,890	71,174	69,044	75,653	66,334
利息及び配当金の受取額 Interest and dividends income received	509	749	1,022	1,133	1,020
利息の支払額 Interest expenses paid	△ 4,995	△ 4,904	△ 5,098	△ 4,226	△ 4,495
退店補償金の支払額 Compensation paid for tenants closing	—	—	—	△ 2,000	△ 603
法人税等の支払額 Income taxes paid	△ 16,879	△ 12,075	△ 15,882	△ 13,679	△ 18,269
営業活動によるキャッシュ・フロー Net cash provided by (used in) operating activities	45,524	54,944	49,086	56,881	43,986
有形固定資産の取得による支出 Purchase of property, plant and equipment	△ 48,319	△ 34,975	△ 49,815	△ 67,274	△ 88,669
工事負担金等受入による収入 Proceeds from contribution received for construction	1,089	2,897	6,399	7,119	7,122
投資有価証券の取得による支出 Purchase of investment securities	△ 55	△ 1,781	△ 711	△ 703	△ 628
投資有価証券の売却及び償還による収入 Proceeds from sales and redemption of investment securities	1,457	303	87	3,434	22
その他 Other, net	△ 123	515	△ 2,070	△ 2,003	△ 690
投資活動によるキャッシュ・フロー Net cash provided by (used in) investing activities	△ 45,950	△ 33,040	△ 46,110	△ 59,428	△ 82,844
短期借入金の純増減額(△は減少) Net increase (decrease) in short-term loans payable	△ 1,080	1,420	859	△ 810	810
長期借入れによる収入 Proceeds from long-term loans payable	9,050	13,070	19,950	17,500	30,830
長期借入金の返済による支出 Repayment of long-term loans payable	△ 12,914	△ 12,292	△ 18,313	△ 12,121	△ 12,308
社債の発行による収入 Proceeds from issuance of bonds	10,000	—	25,352	29,844	29,878
社債の償還による支出 Redemption of bonds	—	—	△ 21,623	△ 10,000	△ 10,000
長期未払金の返済による支出 Payments for long-term accounts payable-other	△ 1,283	△ 839	△ 680	△ 3,447	—
自己株式の取得による支出 Purchase of treasury stock	△ 4,419	△ 1,963	△ 117	△ 91	△ 3,819
配当金の支払額 Cash dividends paid	△ 3,755	△ 3,722	△ 3,706	△ 3,705	△ 3,683
その他 Other, net	88	29	12	25	△ 232
財務活動によるキャッシュ・フロー Net cash provided by (used in) financing activities	△ 4,314	△ 4,299	1,733	17,194	31,474
現金及び現金同等物に係る換算差額 Effect of exchange rate change on cash and cash equivalents	5	5	4	3	1
現金及び現金同等物の増減額(△は減少) Net increase (decrease) in cash and cash equivalents	△ 4,735	17,609	4,713	14,650	△ 7,382
現金及び現金同等物の期首残高 Cash and cash equivalents at beginning of period	25,928	21,192	38,802	43,516	58,167
現金及び現金同等物の期末残高 Cash and cash equivalents at end of period	21,192	38,802	43,516	58,167	50,784

セグメント情報
Segment information

営業収益 Operating revenue



(100万円 millions of yen)

	2005/3	2006/3	2007/3	2008/3	2009/3
運輸業 Transportation	126,700	128,519	130,097	132,453	130,956
流通業 Merchandise sales	186,299	188,697	188,240	190,141	185,237
不動産業 Real estate	24,192	24,322	27,201	23,745	23,964
レジャー・サービス業 Leisure	84,242	84,775	73,718	73,835	70,684
その他 Others	49,330	51,777	57,933	55,451	58,305
合計 Total	470,764	478,092	477,191	475,627	469,148
消去 Elimination	(37,693)	(39,839)	(46,994)	(46,437)	(48,997)
連結 Consolidated	433,071	438,253	430,197	429,190	420,150

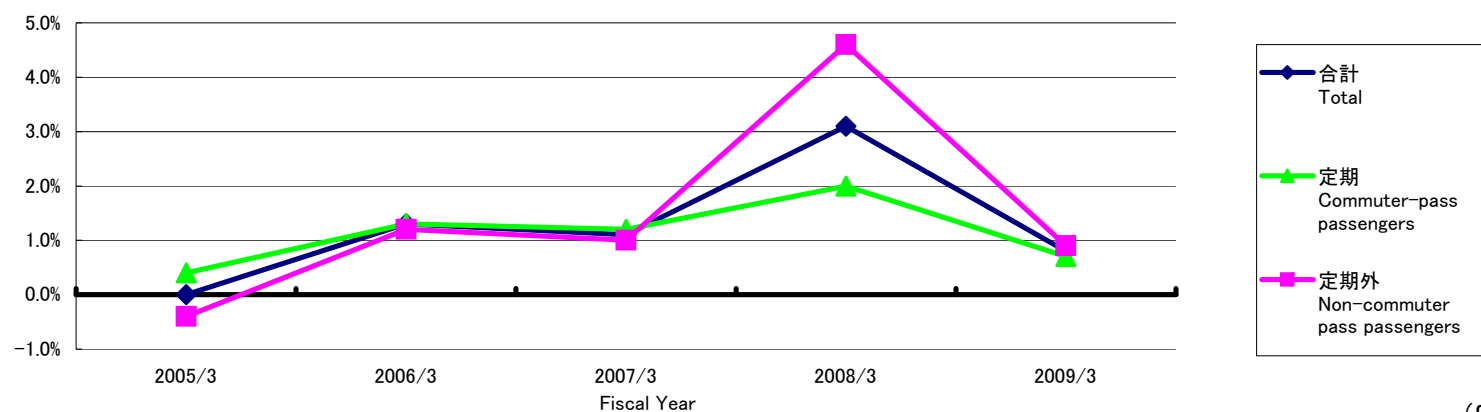
セグメント情報 Segment information

営業収益の明細 Operating revenue transaction

(100万円 millions of yen)

	2005/3	2006/3	2007/3	2008/3	2009/3
運輸業 Transportation					
鉄道事業 Railways	79,502	80,421	81,238	82,902	82,680
バス事業 Bus services	27,181	27,840	28,141	28,610	28,844
タクシー業 Taxi services	14,071	14,344	14,604	14,665	13,749
その他 Others	3,099	3,164	3,101	3,156	2,554
セグメント間取引 Intersegment	2,845	2,748	3,011	3,118	3,129
合計 Total	126,700	128,519	130,097	132,453	130,956

鉄道輸送人員の対前年増減率 Variation ratio against previous year of passengers transported (Railways)



	2005/3	2006/3	2007/3	2008/3	2009/3
定期 Commuter-pass passengers	0.4	1.3	1.2	2.0	0.7
定期外 Non-commuter pass passengers	△ 0.4	1.2	1.0	4.6	0.9
合計 Total	0.0	1.3	1.1	3.1	0.8

セグメント情報

Segment information

営業収益の明細 Operating revenue transaction

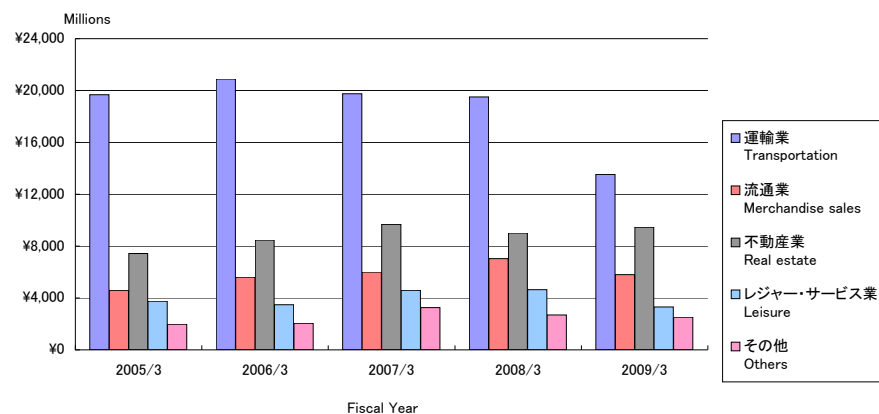
(100万円 millions of yen)

	2005/3	2006/3	2007/3	2008/3	2009/3
流通業 Merchandise sales					
百貨店業 Department stores	113,146	113,611	111,628	110,620	104,939
ストア業 Retail stores	37,865	38,779	39,761	40,865	41,317
書籍販売業 Retail stores for books	9,515	10,456	11,191	11,816	12,439
駅売店業 Retail stores at stations	10,560	10,120	9,657	9,733	9,753
その他 Others	12,687	13,098	13,472	14,402	14,523
セグメント間取引 Intersegment	2,524	2,630	2,528	2,703	2,263
合計 Total	186,299	188,697	188,240	190,141	185,237
不動産業 Real estate					
不動産賃貸業 Land and building leasing	13,284	14,918	15,455	16,850	17,119
不動産販売業 Development for selling by lots	7,903	6,186	8,485	3,303	3,151
その他 Others	1,134	1,295	1,294	1,508	1,383
セグメント間取引 Intersegment	1,869	1,922	1,965	2,082	2,310
合計 Total	24,192	24,322	27,201	23,745	23,964
レジャー・サービス業 Leisure					
ホテル業 Hotels	34,659	35,930	37,163	37,292	35,459
旅行業 Travel services	32,794	31,693	18,706	18,641	18,058
広告代理業 Advertising services	5,637	5,715	5,875	5,805	5,270
その他 Others	6,678	6,501	6,349	6,676	6,586
セグメント間取引 Intersegment	4,473	4,934	5,622	5,420	5,309
合計 Total	84,242	84,775	73,718	73,835	70,684
その他 Others					
ビル総合管理業 Building maintenance	6,711	7,093	8,666	8,775	9,156
車両整備業 Railway car maintenance	5,335	6,607	6,453	5,761	5,901
建築・土木業 Construction	11,131	9,745	8,171	7,015	6,287
その他 Others	169	729	776	787	976
セグメント間取引 Intersegment	25,981	27,602	33,865	33,112	35,984
合計 Total	49,330	51,777	57,933	55,451	58,305

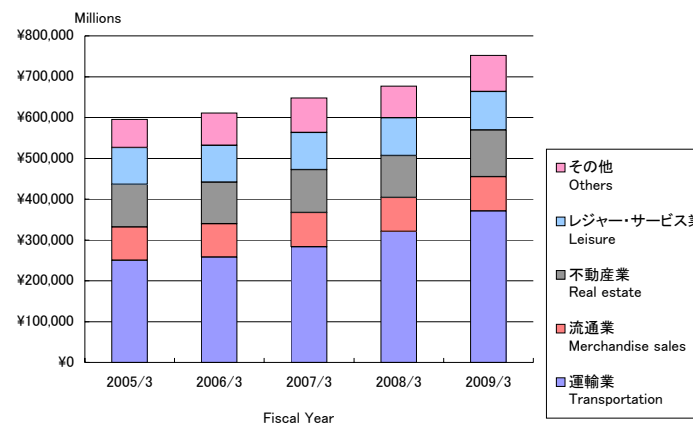
セグメント情報

Segment information

営業利益 Operating income



総資産 Total Assets



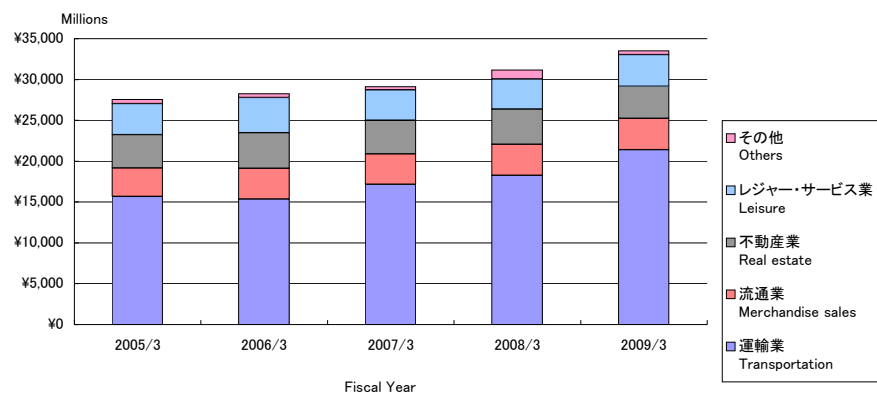
(100万円 millions of yen)

営業利益 Operating income	2005/3	2006/3	2007/3	2008/3	2009/3
運輸業 Transportation	19,671	20,896	19,760	19,513	13,528
流通業 Merchandise sales	4,603	5,614	6,007	7,044	5,803
不動産業 Real estate	7,432	8,473	9,690	9,013	9,447
レジャー・サービス業 Leisure	3,752	3,481	4,595	4,650	3,310
その他 Others	1,978	2,045	3,257	2,691	2,514
合計 Total	37,437	40,512	43,312	42,913	34,604
消去 Elimination	(340)	(574)	(1,013)	(972)	(1,023)
連結 Consolidated	37,096	39,937	42,298	41,941	33,581

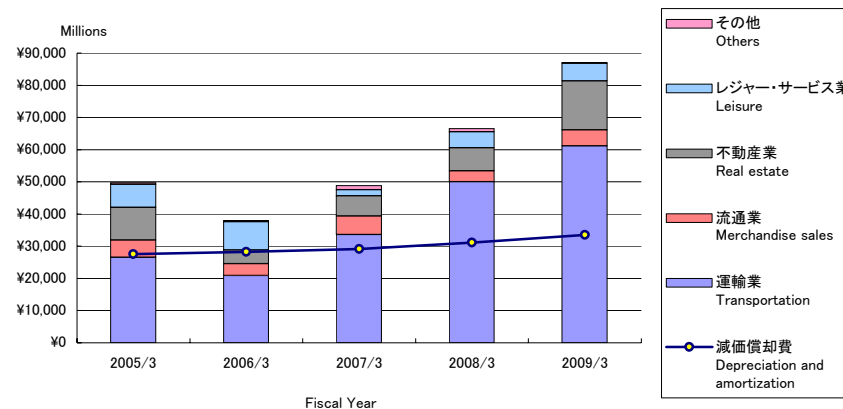
総資産 Total Assets	2005/3	2006/3	2007/3	2008/3	2009/3
運輸業 Transportation	250,574	257,984	283,292	320,682	370,646
流通業 Merchandise sales	81,371	81,545	83,820	83,592	84,442
不動産業 Real estate	103,826	101,894	105,169	102,242	114,158
レジャー・サービス業 Leisure	90,329	90,111	90,520	92,698	94,236
その他 Others	69,553	79,130	84,889	77,297	88,763
合計 Total	595,655	610,666	647,692	676,513	752,247
消去 Elimination	(24,343)	20,034	468	(16,351)	(60,155)
連結 Consolidated	571,311	630,700	648,161	660,161	692,091

セグメント情報
Segment information

減価償却費 Depreciation and amortization



減価償却費と設備投資 Depreciation and amortization & Capital expenditures



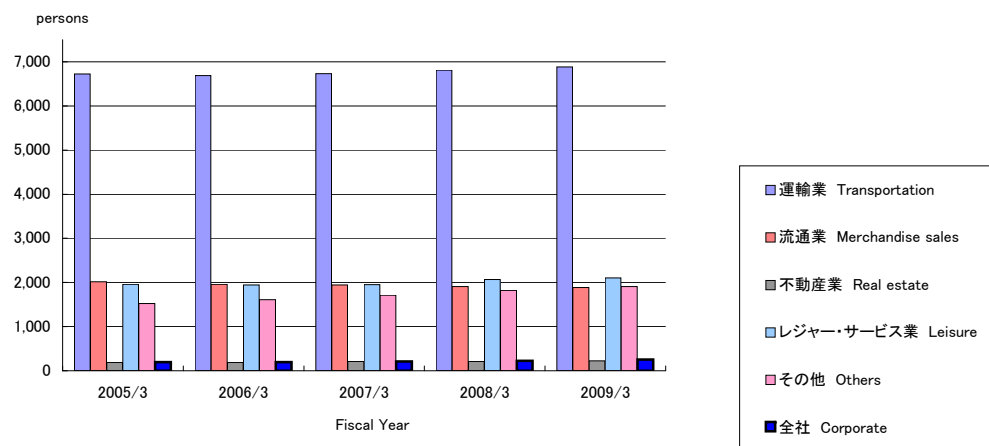
(100万円 millions of yen)

減価償却費 Depreciation and amortization	2005/3	2006/3	2007/3	2008/3	2009/3
運輸業 Transportation	15,667	15,356	17,154	18,272	21,414
流通業 Merchandise sales	3,488	3,768	3,750	3,798	3,817
不動産業 Real estate	4,090	4,334	4,102	4,293	3,945
レジャー・サービス業 Leisure	3,792	4,323	3,719	3,682	3,875
その他 Others	532	461	381	1,114	478
合計 Total	27,571	28,244	29,108	31,161	33,530
消去 Elimination	(61)	(61)	(16)	(77)	(97)
連結 Consolidated	27,509	28,183	29,091	31,084	33,432

設備投資 Capital expenditures	2005/3	2006/3	2007/3	2008/3	2009/3
運輸業 Transportation	26,521	20,905	33,662	50,020	61,180
流通業 Merchandise sales	5,416	3,702	5,759	3,402	4,946
不動産業 Real estate	10,175	4,251	6,213	7,133	15,212
レジャー・サービス業 Leisure	7,112	8,719	1,898	4,969	5,460
その他 Others	548	378	1,342	1,031	184
合計 Total	49,774	37,957	48,877	66,556	86,984
消去 Elimination	(27)	(103)	(848)	(821)	(988)
連結 Consolidated	49,746	37,854	48,028	65,735	85,996

セグメント情報 Segment information

従業員数 Numbers of employee



(人 persons)

従業員数 Numbers of employee	2005/3	2006/3	2007/3	2008/3	2009/3
運輸業 Transportation	6,721	6,686	6,731	6,812	6,882
流通業 Merchandise sales	2,019	1,962	1,944	1,909	1,884
不動産業 Real estate	189	192	207	211	222
レジャー・サービス業 Leisure	1,962	1,942	1,954	2,064	2,100
その他 Others	1,521	1,609	1,709	1,820	1,905
全社 Corporate	198	195	210	225	251
連結 Consolidated	12,610	12,586	12,755	13,041	13,244